

UNIT 154/100 CLEMENTINE BOULEVARD, TREEBY



House Area

Living 119.19m²

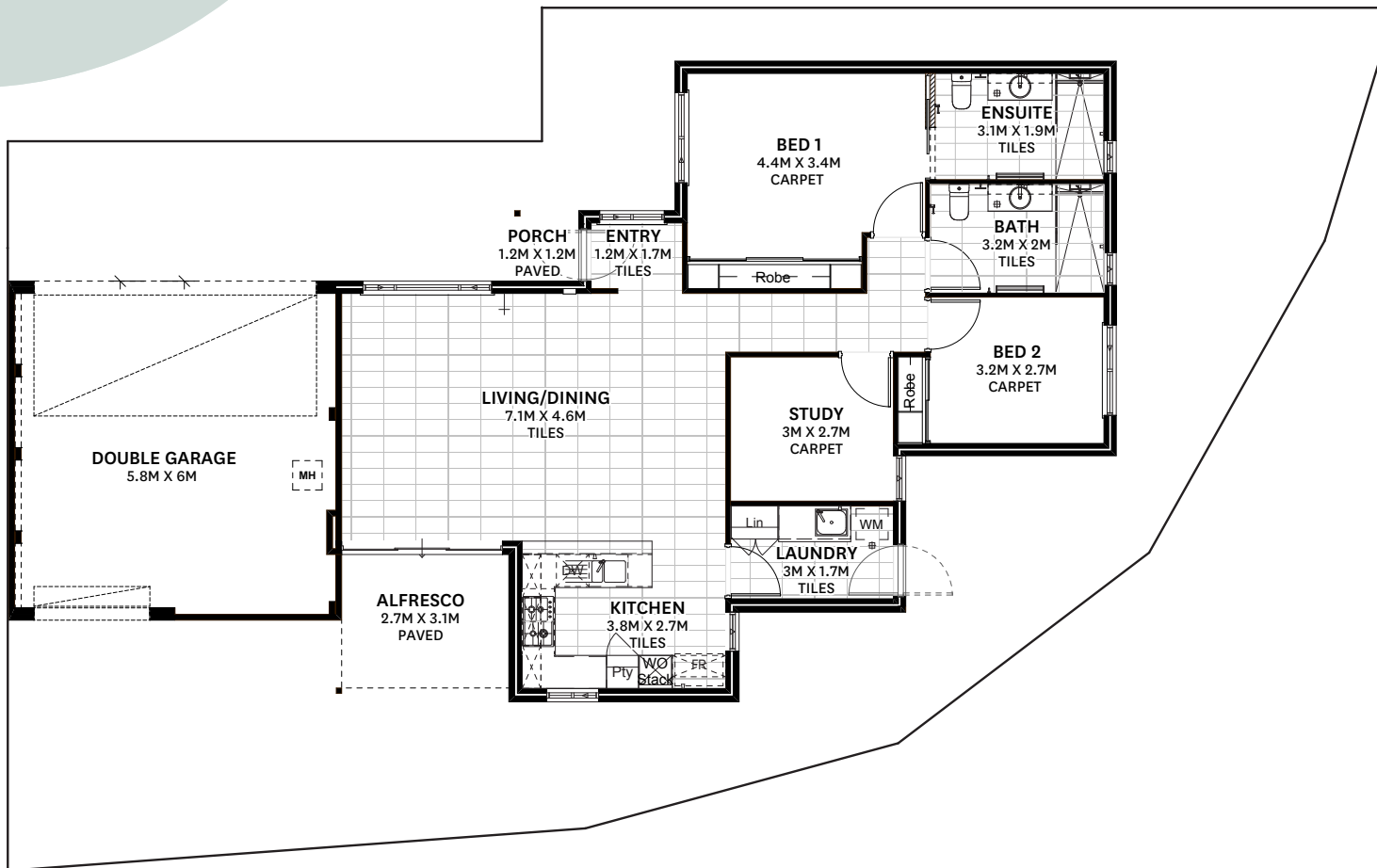
Garage 39.06m²

Alfresco 8.27m²

Porch Area 1.58m²

Total Build Area 168.10m²

Total Lot Area 314m²



ASPIRE by  Stockland

This document is supplied solely for the purpose of providing an indicative floor plan of the nominated lot within the proposed development called "Aspire Calleya" and is not intended to be used for any other purpose. The contents of this document are based on information available to Stockland at the time of creation (March 2021). Unless otherwise specified, dimensions are taken from the midline of walls. All dimensions and areas are approximate. Cars, furniture, decorative items and plants are shown for indicative purposes only and are not included in the sale. The contract for sale should be reviewed in relation to dimensions, areas, sale inclusions and specifications. Stockland reserves the right to make changes, without notice, to the information contained in this document at any time prior to you entering into a contract for sale with Stockland. If this document is included in a contract for sale, Stockland reserves the right to make changes to the information contained in this document in accordance with the terms of the contract for sale. Information and images relating to landscaping are indicative only and may show plantings which may not be mature at settlement. No liability is accepted for any loss or damage arising from the improper use or reliance on this document or its contents.