



2



2



2

## Montrose

The Montrose is an architecturally designed two bedroom home with stylish contemporary living in mind.

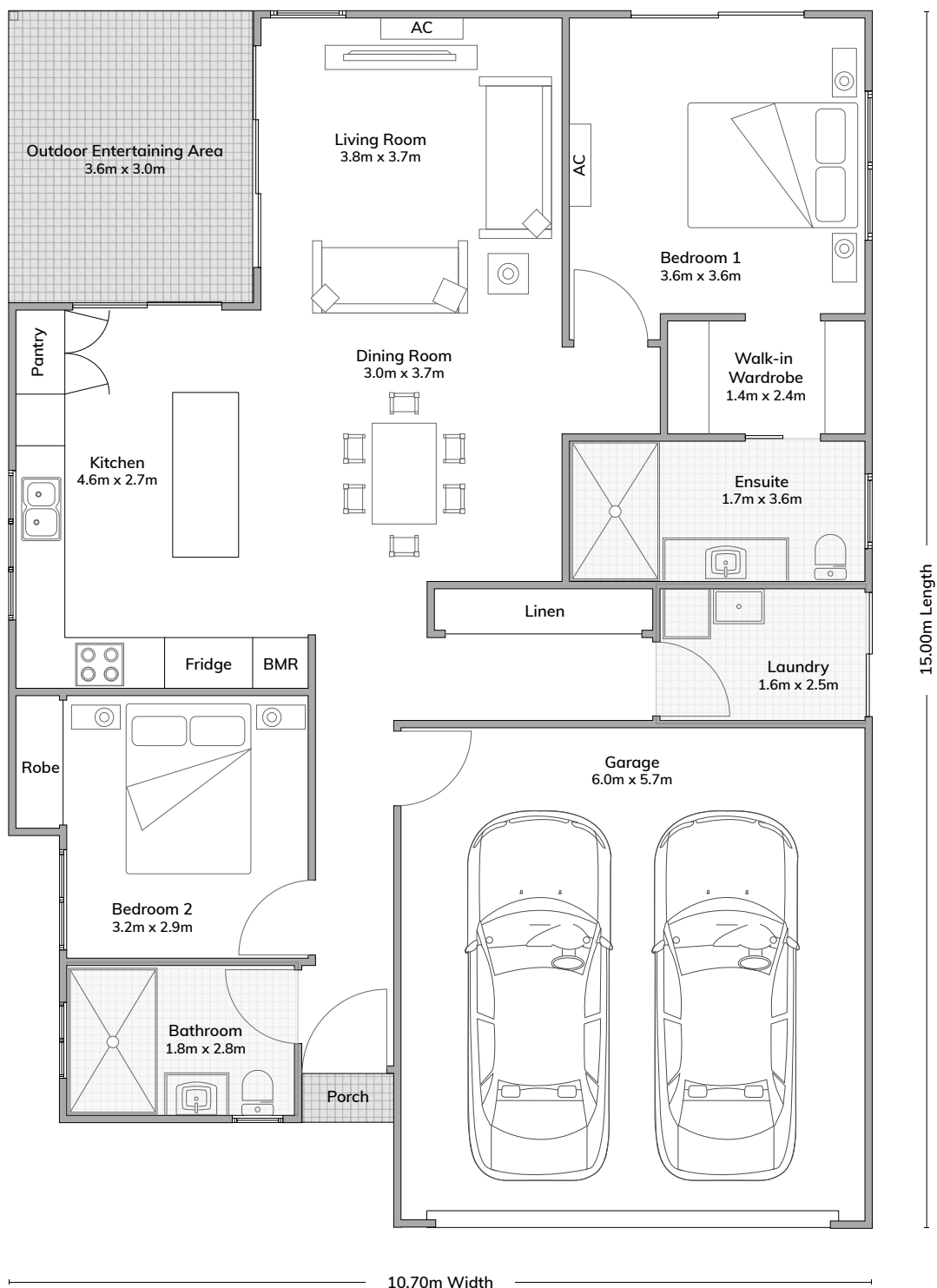
Offering open plan living with raked ceilings, separate laundry and a spacious modern kitchen with stainless steel appliances.



### Features

- Extra wide double garage
- Landscaped gardens
- Spacious outdoor entertaining
- Master with ensuite and walk-in wardrobe
- Reverse cycle split system A/C

# Montrose



\*The facade renders and floorplans are provided for illustrative purposes only. It may contain upgraded items/finishes not included as standard. For detailed home pricing, please talk to a sales consultant. All efforts have been made to ensure accuracy of this brochure at time of print.