



**8 ETON STREET, NUNDAH**



# LIFESTYLE RESIDENCE

Eight on Eton introduces a beautiful new way of living that not only capitalises on its superb location, but the landscape that surrounds.

More than just a home, it's Nundah's latest work of art!

A unique collection of just 49, one, two and three bedroom residences spanning across 7 floors. Each residences has been impeccably designed to suit a modern day lifestyle!

Light filled spaces, stunning outlooks, open plan living, quality appliances, exceptional finishes and secure car parking adds to the charm and appeal.

Eight on Eton, is a lifestyle boutique development nestled in a village atmosphere.

**Live, Invest or Plan** for the **Future.**

Welcome to *eight on eton*



# GATEWAY TO BRISBANE CBD

BRISBANE CBD

BRISBANE AIRPORT

TOOMBUL

ST JOSEPH'S NUNDAH

NUNDAH STATE SCHOOL

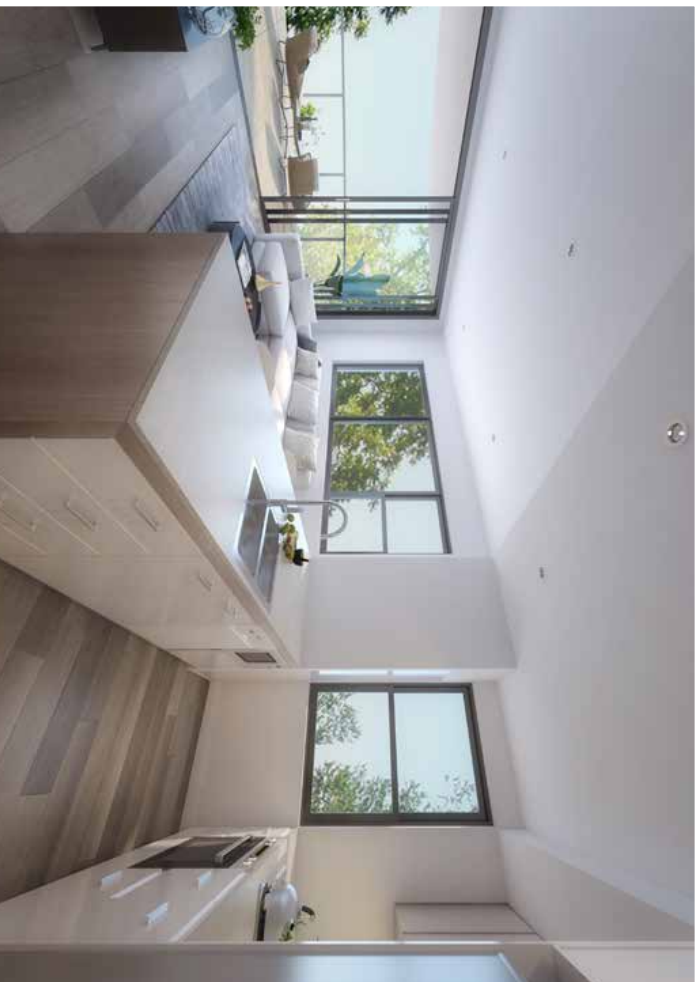
NUNDAH VILLAGE

NUNDAH STATION





Without compromising on versatility and function the kitchens at Eight on Eton are your culinary headquarters.



The open plan perfection sets the scene for a relaxed and refined living with quality finishes throughout, including stonebenchtops, BOSCH appliances and timber cabinetry.

No matter the size or configuration, each residence at Eight on Eton has been thoughtfully crafted to maximise space.



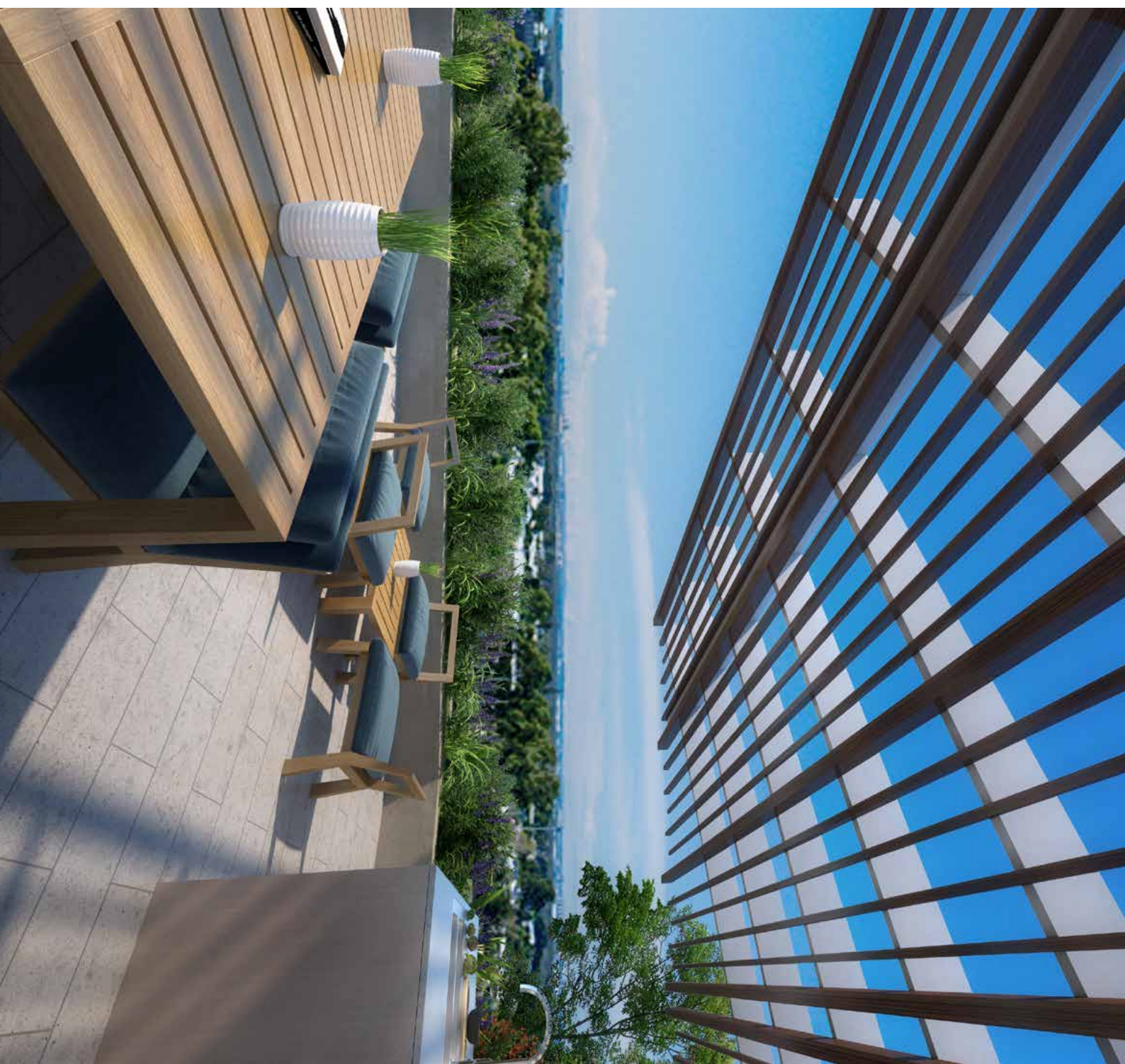
Slide open your full length doors and step out onto your generous private alfresco balcony for amazing district views.

# SPOTLIGHT ON NUNDDAH

Eight on Eton is tucked away in a quiet peaceful residential precinct. You would never realise that you are so infinitely close to everything that Nundah Village has to offer, just a 7 minute walk away.

A lifestyle development situated among Brisbane's most affluent surrounding suburbs such as Clayfield and Ascot.

Fine dining, boutique shopping, cafes and parks are all part of the neighbourhood lifestyle.





# EIGHT ON ETON WELL CONNECTED

Nundah is a convenient boutique village with a **retail** and **dining** focus.

- Just 8 kilometers to Brisbane CBD
- Close proximity to public transport
- Educational and hospital facilities nearby
- Stroll to retail and dining

**Live, Invest or Plan** for the **Future**.



Brisbane Airport | 11 Minutes



Nundah Train Station | 5 Minutes



Nundah Bus Station | 1 Minute

# VIBRANT LOCATION

Nundah is one of the most well-connected suburbs in Brisbane, with trains and buses coming through often and the M7 Tunnel.

The airport is close by, making this a great location for those who travel frequently.

## PARK AND RECREATION

- 1 Nundah Village ..... 500m
- 2 Westfield Chermide ..... 3.7km
- 3 DFO Brisbane ..... 4.5km
- 4 Oxenham Park ..... 1.2km
- 5 Boyd Park ..... 700m
- 6 Toombul Shopping Centre ..... 1.2km
- 7 Nundah Station ..... 1.6km
- 8 Doomben Racecourse ..... 5km

## EDUCATION

- 9 Nundah State School ..... 600m
- 10 Australian Catholic University ..... 6km
- 11 St Agatha's Primary School ..... 3.9km
- 12 Wavell State High School ..... 2.6km
- 13 Kelvin Grove State College ..... 9km
- 14 Northgate State School ..... 2.2km
- 15 Brisbane Grammar School Northgate ..... 3km
- 16 Geebung State School ..... 4km

## HOSPITAL

- 17 The Prince Charles Hospital ..... 4.2km
- 18 Royal Brisbane and Women's Hospital ..... 7km
- 19 North West Private Hospital ..... 7km





# YOUR LIVESTYLE IN NUNDDAH VILLAGE



Block House Coffee | 2 Minutes



Brisbane CBD | 16 Minutes



Nundah Village | 2 Minutes





**SALES DISPLAY**

**106/1 Aspinall Street, Nundah**

**WWW.EIGHTONETON.COM**

**Call Bill 0418 105 354**

**bill@projectpropertysales.com.au**



Proudly developed by  
[AUSDEV.COM.AU](http://AUSDEV.COM.AU)

**8 ETON STREET, NUNDAH**