



LIFESTYLE

Bellarine

WATERFRONT LIVING ON THE BELLARINE

Lifestyle
BELLARINE



INTRODUCING Lifestyle Bellarine

The best of the Bellarine
on your doorstep

Lifestyle Bellarine is a coastal community that's set to redefine downsizing for our homeowners. This connected beachside community is the gateway to the Bellarine Peninsula, providing a tranquil haven for working, semi-retired and retired downsizers.

Featuring modern, low-maintenance, first-of-their-kind homes and multi-million dollar amenities, this bayside downsizing community presents boundless opportunities to live your life your way, surrounded by the many natural delights of the Bellarine.

Wake up and revel in the spectacular sunrise views, fresh salty air, picturesque outlooks

that spread across the bay to the You Yangs and all the easy, breezy benefits that come with living on the waterfront.

Beyond the comforts of your coastal home, you'll enjoy unrivalled proximity to the beach, local shops and cafes, parks, walking trails and lookout points, wineries, golf ranges and a whole suite of attractions for which the Bellarine Peninsula is celebrated.

If you're ready to embrace your dream of living life by the beach, Lifestyle Bellarine is shore to impress!



THE BELLARINE. A RICH HISTORY OF SHIPWRECKS, ESCAPED CONVICTS & A TOURIST'S PLEASURE GROUND.

PORT PHILLIP

The Timber round the banks of this Port
is very low and bad.

The different kinds are Blue gum, Banksia,
Oak, & Mimosa of sorts.

High Water, full & Change, at the Heads at 2 O'clock

The soundings by Mr Robbins

The quality of the soil by Jas. Flemming

Tide rise irregular from 3 to 6 feet

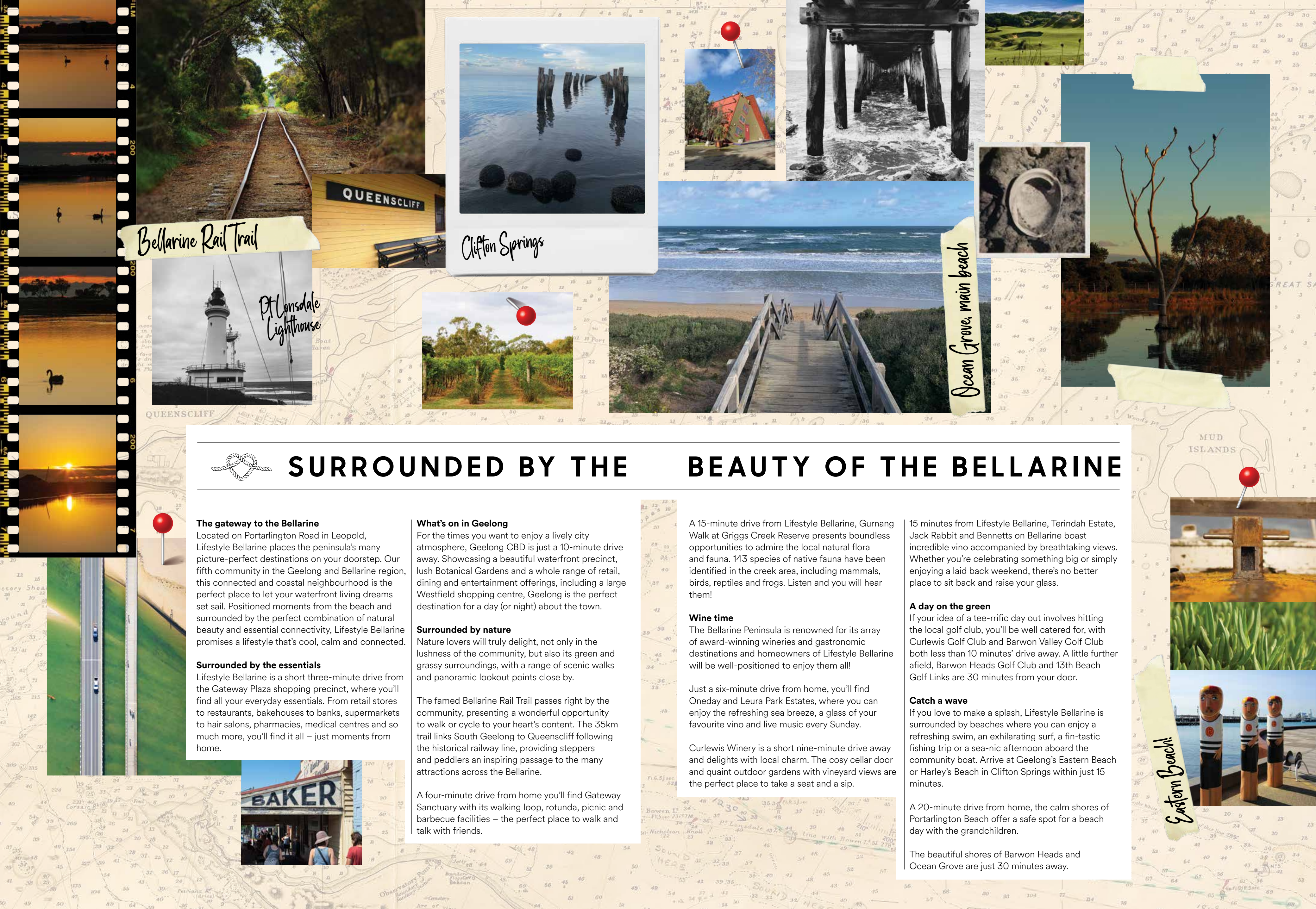
Surveyed by
C. Grimes
Adj. Surveyor Genl.
N. S. Wales
1803

Rocky Point. Lat 38° 18' 0 S
Longitude 144° 41' 0 E
Variation 8° 0. 0 E

Sullivan Bay where Lt Gov Collins made his Temporary Es

THE FIRST NATIONS PEOPLES INHABITED
THE BELLARINE PENINSULA LONG
BEFORE EUROPEAN SETTLEMENT.
IN 1797, THE ALMA DOPPEL SAILED INTO
THE WATERS SURROUNDING WHAT IS NOW
KNOWN AS PORTARLINGTON. LIEUTENANT
JOHN MURRAY AND HIS TEAM EXPLORED
THE AREA IN 1802. SHORTLY AFTER,
MATTHEW FLINDERS CAMPED AT INDENTED
HEAD AND VISITED PORTARLINGTON
AND POINT RICHARDS WHILE HE WAS
SURVEYING THE AUSTRALIAN COASTLINE.
SURVEYOR-GENERAL CHARLES GRIMES
VISITED IN 1803 AND MET WITH FIRST
NATIONS PEOPLES TO TRADE FOOD AND
UTENSILS. ESCAPED CONVICT WILLIAM
BUCKLEY CALLED THE AREA HOME FOR
MORE THAN 30 YEARS. JOHN BATMAN
ESTABLISHED A CAMP AT INDENTED HEAD
AND LATER SELECTED THE AREA KNOWN
AS MELBOURNE AS A GOOD
PLACE FOR A VILLAGE.





Bellarine Rail Trail

Clifton Springs

Pt Lonsdale Lighthouse

Ocean Grove, main beach

Eastern Beach!



SURROUNDED BY THE BEAUTY OF THE BELLARINE

The gateway to the Bellarine

Located on Portarlington Road in Leopold, Lifestyle Bellarine places the peninsula's many picture-perfect destinations on your doorstep. Our fifth community in the Geelong and Bellarine region, this connected and coastal neighbourhood is the perfect place to let your waterfront living dreams set sail. Positioned moments from the beach and surrounded by the perfect combination of natural beauty and essential connectivity, Lifestyle Bellarine promises a lifestyle that's cool, calm and connected.

Surrounded by the essentials

Lifestyle Bellarine is a short three-minute drive from the Gateway Plaza shopping precinct, where you'll find all your everyday essentials. From retail stores to restaurants, bakehouses to banks, supermarkets to hair salons, pharmacies, medical centres and so much more, you'll find it all – just moments from home.

What's on in Geelong

For the times you want to enjoy a lively city atmosphere, Geelong CBD is just a 10-minute drive away. Showcasing a beautiful waterfront precinct, lush Botanical Gardens and a whole range of retail, dining and entertainment offerings, including a large Westfield shopping centre, Geelong is the perfect destination for a day (or night) about the town.

Surrounded by nature

Nature lovers will truly delight, not only in the lushness of the community, but also its green and grassy surroundings, with a range of scenic walks and panoramic lookout points close by.

The famed Bellarine Rail Trail passes right by the community, presenting a wonderful opportunity to walk or cycle to your heart's content. The 35km trail links South Geelong to Queenscliff following the historical railway line, providing steppers and peddlers an inspiring passage to the many attractions across the Bellarine.

A four-minute drive from home you'll find Gateway Sanctuary with its walking loop, rotunda, picnic and barbecue facilities – the perfect place to walk and talk with friends.

A 15-minute drive from Lifestyle Bellarine, Gurnang Walk at Griggs Creek Reserve presents boundless opportunities to admire the local natural flora and fauna. 143 species of native fauna have been identified in the creek area, including mammals, birds, reptiles and frogs. Listen and you will hear them!

Wine time

The Bellarine Peninsula is renowned for its array of award-winning wineries and gastronomic destinations and homeowners of Lifestyle Bellarine will be well-positioned to enjoy them all!

Just a six-minute drive from home, you'll find Oneday and Leura Park Estates, where you can enjoy the refreshing sea breeze, a glass of your favourite vino and live music every Sunday.

Curlewis Winery is a short nine-minute drive away and delights with local charm. The cosy cellar door and quaint outdoor gardens with vineyard views are the perfect place to take a seat and a sip.

15 minutes from Lifestyle Bellarine, Terindah Estate, Jack Rabbit and Bennetts on Bellarine boast incredible vino accompanied by breathtaking views. Whether you're celebrating something big or simply enjoying a laid back weekend, there's no better place to sit back and raise your glass.

A day on the green

If your idea of a tee-rific day out involves hitting the local golf club, you'll be well catered for, with Curlewis Golf Club and Barwon Valley Golf Club both less than 10 minutes' drive away. A little further afield, Barwon Heads Golf Club and 13th Beach Golf Links are 30 minutes from your door.

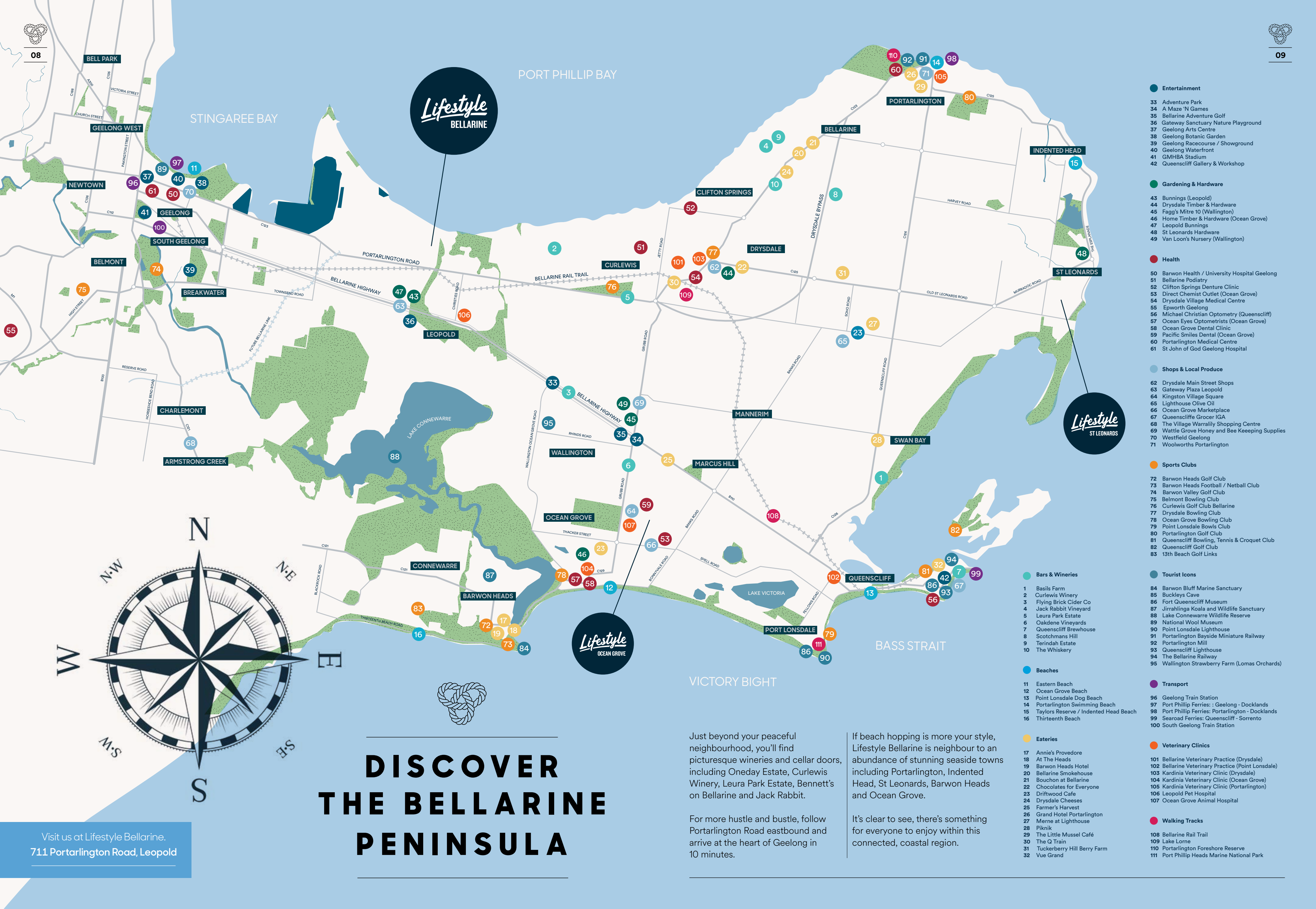
Catch a wave

If you love to make a splash, Lifestyle Bellarine is surrounded by beaches where you can enjoy a refreshing swim, an exhilarating surf, a fin-tastic fishing trip or a sea-nic afternoon aboard the community boat. Arrive at Geelong's Eastern Beach or Harley's Beach in Clifton Springs within just 15 minutes.

A 20-minute drive from home, the calm shores of Portarlington Beach offer a safe spot for a beach day with the grandchildren.

The beautiful shores of Barwon Heads and Ocean Grove are just 30 minutes away.





Visit us at Lifestyle Bellarine.
711 Portarlington Road, Leopold

DISCOVER THE BELLARINE PENINSULA

Just beyond your peaceful neighbourhood, you'll find picturesque wineries and cellar doors, including Oneday Estate, Curlewis Winery, Leura Park Estate, Bennett's on Bellarine and Jack Rabbit.

For more hustle and bustle, follow Portarlington Road eastbound and arrive at the heart of Geelong in 10 minutes.

If beach hopping is more your style, Lifestyle Bellarine is neighbour to an abundance of stunning seaside towns including Portarlington, Indented Head, St Leonards, Barwon Heads and Ocean Grove.

It's clear to see, there's something for everyone to enjoy within this connected, coastal region.

Entertainment

- 33 Adventure Park
- 34 A Maze 'N Games
- 35 Bellarine Adventure Golf
- 36 Gateway Sanctuary Nature Playground
- 37 Geelong Arts Centre
- 38 Geelong Botanic Garden
- 39 Geelong Racecourse / Showground
- 40 Geelong Waterfront
- 41 GMHBA Stadium
- 42 Queenscliff Gallery & Workshop

Gardening & Hardware

- 43 Bunnings (Leopold)
- 44 Drysdale Timber & Hardware
- 45 Fagg's Mitre 10 (Wallington)
- 46 Home Timber & Hardware (Ocean Grove)
- 47 Leopold Bunnings
- 48 St Leonards Hardware
- 49 Van Loon's Nursery (Wallington)

Health

- 50 Barwon Health / University Hospital Geelong
- 51 Bellarine Podiatry
- 52 Clifton Springs Denture Clinic
- 53 Direct Chemist Outlet (Ocean Grove)
- 54 Drysdale Village Medical Centre
- 55 Epworth Geelong
- 56 Michael Christian Optometry (Queenscliff)
- 57 Ocean Eyes Optometrists (Ocean Grove)
- 58 Ocean Grove Dental Clinic
- 59 Pacific Smiles Dental (Ocean Grove)
- 60 Portarlington Medical Centre
- 61 St John of God Geelong Hospital

Shops & Local Produce

- 62 Drysdale Main Street Shops
- 63 Gateway Plaza Leopold
- 64 Kingston Village Square
- 65 Lighthouse Olive Oil
- 66 Ocean Grove Marketplace
- 67 Queenscliff Grocer IGA
- 68 The Village Warrallilly Shopping Centre
- 69 Wattle Grove Honey and Bee Keeping Supplies
- 70 Westfield Geelong
- 71 Woolworths Portarlington

Sports Clubs

- 72 Barwon Heads Golf Club
- 73 Barwon Heads Football / Netball Club
- 74 Barwon Valley Golf Club
- 75 Belmont Bowling Club
- 76 Curlewis Golf Club Bellarine
- 77 Drysdale Bowling Club
- 78 Ocean Grove Bowling Club
- 79 Point Lonsdale Bowls Club
- 80 Portarlington Golf Club
- 81 Queenscliff Bowling, Tennis & Croquet Club
- 82 Queenscliff Golf Club
- 83 13th Beach Golf Links

Tourist Icons

- 84 Barwon Bluff Marine Sanctuary
- 85 Buckleys Cave
- 86 Fort Queenscliff Museum
- 87 Jirrahinga Koala and Wildlife Sanctuary
- 88 Lake Connewarre Wildlife Reserve
- 89 National Wool Museum
- 90 Point Lonsdale Lighthouse
- 91 Portarlington Bayside Miniature Railway
- 92 Portarlington Mill
- 93 Queenscliff Lighthouse
- 94 The Bellarine Railway
- 95 Wallington Strawberry Farm (Lomas Orchards)

Transport

- 96 Geelong Train Station
- 97 Port Phillip Ferries: : Geelong - Docklands
- 98 Port Phillip Ferries: Portarlington - Docklands
- 99 Seaward Ferries: Queenscliff - Sorrento
- 100 South Geelong Train Station

Veterinary Clinics

- 101 Bellarine Veterinary Practice (Drysdale)
- 102 Bellarine Veterinary Practice (Point Lonsdale)
- 103 Kardinia Veterinary Clinic (Drysdale)
- 104 Kardinia Veterinary Clinic (Ocean Grove)
- 105 Kardinia Veterinary Clinic (Portarlington)
- 106 Leopold Pet Hospital
- 107 Ocean Grove Animal Hospital

Walking Tracks

- 108 Bellarine Rail Trail
- 109 Lake Lorne
- 110 Portarlington Foreshore Reserve
- 111 Port Phillip Heads Marine National Park

Bars & Wineries

- 1 Basils Farm
- 2 Curlewis Winery
- 3 Flying Brick Cider Co
- 4 Jack Rabbit Vineyard
- 5 Leura Park Estate
- 6 Oakdene Vineyards
- 7 Queenscliff Brewhouse
- 8 Scotchmans Hill
- 9 Terindah Estate
- 10 The Whiskery

Beaches

- 11 Eastern Beach
- 12 Ocean Grove Beach
- 13 Point Lonsdale Dog Beach
- 14 Portarlington Swimming Beach
- 15 Taylors Reserve / Indented Head Beach
- 16 Thirteenth Beach

Eateries

- 17 Annie's Provodore
- 18 At The Heads
- 19 Barwon Heads Hotel
- 20 Bellarine Smokehouse
- 21 Bouchon at Bellarine
- 22 Chocolates for Everyone
- 23 Driftwood Cafe
- 24 Drysdale Cheeses
- 25 Farmer's Harvest
- 26 Grand Hotel Portarlington
- 27 Merne at Lighthouse
- 28 Piknik
- 29 The Little Mussel Café
- 30 The Q Train
- 31 Tuckerberry Hill Berry Farm
- 32 Vue Grand



RIGHT-SIZED HOMES WITH PEACE OF MIND

Our stylish, brand new homes showcase considered designs, quality fixtures and fittings, an abundance of natural light and the perfect balance of indoor and outdoor spaces.

“It’s the small things that
make the greatest impact”



“Every last detail is spot on”



With standard inclusions that are anything but standard, our homes set the tone for your lifestyle of relaxation and leisure. Above all, our homes are designed to help you live a low-maintenance and clutter-free life so you can focus on what’s important – you!

Lifestyle Bellarine homes will be powered solely by electricity and renewable energy to minimise our environmental impact and reduce your energy bills. We’re dedicated to ensuring our community is sustainable for the future, which means you’ll now find an array of innovative and energy-efficient features within your home!

Here’s just a small selection of inclusions that make the homes at Lifestyle Bellarine a cut above the rest

Life is what you bake it

Your home comes with stainless steel appliances and a sleek 40mm engineered stone island bench with waterfall ends for timeless elegance and greater durability. Plus, a walk-in pantry, soft close drawers, a semi-integrated dishwasher, and LED strip lighting. Your kitchen will be an absolute culinary delight, satisfying your appetite.

Catch your Zs with ease

Getting your beauty sleep will be as easy as 1, 2, 3 in your home’s tranquil and spacious bedrooms. Featuring either walk-in or built-in robes, there’ll be plenty of space for storage.

Wash, brush, floss and flush

Frameless shower screens or a walk-in shower, a fully tiled shower ledge and floating cabinets with LED lighting in your ensuite will help you feel showered in style.

Breathe in the fresh air

Pour yourself a cuppa and enjoy the lush scenery of your own garden and your community’s beautiful green spaces from your front veranda or backyard deck.

Colour your home happy

Your home will be painted with Dulux EnvirO2 – the only major paint brand formula with a Global Greentag certification. This paint formula has low levels of VOC (Volatile Organic Compounds), making it better for you and the environment while still producing superior performance. We simply love finding new ways to make our homes eco-friendly!

Safe and secure

Locking up your home has never felt safer with security mesh doors and flywire to all rear sliding doors. Coming standard to all homes at Lifestyle Bellarine, you’ll enjoy the extra peace of mind.

Plantation sensation

Let the light in or shut it out, with beautiful plantation shutters to the front façade windows of your home. These attractive features are a new addition to our standard inclusions and will offer greater function and flair.

Light up your life

Enjoy LED strip lighting under the floating cabinets found in all kitchens, main bathrooms and ensuites.

Searching for Narnia

All home designs have a walk-in robe to the master bedroom and are complemented by soft-closing drawers.

Electric heat you can’t beat

Cooking in your new kitchen will be easier than ever with an ILVE electric oven and a sleek, black glass ILVE induction cooktop with four or five boosters. Thanks to its instant and even heat distribution and immediate temperature control, we’re confident you’ll love your cooktop. Plus, induction cooking is more efficient than gas burners, reducing energy consumption by up to 70%.

Keep cool and carry on

Maintaining the perfect temperature within your new home will be a cinch with the Haier hi-wall split system or electric ducted heating and cooling.

Feeling hot, hot, hot

Heat your water more efficiently with a Chromagen 170-litre electric heat pump that uses up to 65% less energy than conventional water heaters.

Make your home your own

Not only will you have the ability to choose from a wide range of functional floorplans to suit your lifestyle and budget, you’ll also have the freedom to select finishes that reflect your unique style. From the colour scheme on the walls, to the tiles and flooring; making your home your own is superbly simple.

Built to last

Constructed by experienced and reputable builder Todd Devine Homes, your new home comes with a 10-year structural warranty and a two-year non-structural warranty – making it a super safe haven!



Fall head over
heels for your
brand new home





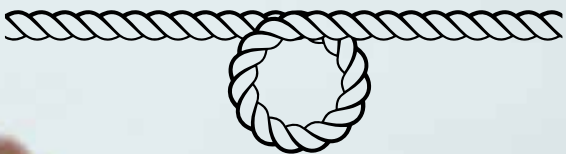
CLUB LIFESTYLE

Thought life at Lifestyle Communities couldn't get any sweeter? Think again!

Introducing Club Lifestyle – an exclusive program that unlocks a world of unique benefits and adventures. This incredible program will enhance your experience as a Lifestyle Communities homeowner in three big ways

Live big every day

We partner with businesses to deliver a growing list of exclusive deals for everyday essentials, so you can spend more on the things you love. From car servicing and furniture, to health services and even beverages, the discounts offered through our partnerships help to make every day extraordinary and extra affordable.



Bigger, better adventures

We want you to take on bigger and better adventures as part of your Lifestyle Communities experience, so we've partnered with APT Luxury Travel and Samsonite Luggage to deliver exclusive discounts and offers.

Hit the Great Ocean Road, on us

Let your coastal lifestyle reach new heights! We're offering motorhomes at Lifestyle Bellarine, so you can hit the Great Ocean Road whenever you feel a road trip calling.

For the times you desire a change of sea-nery, you can also stay at Lifestyle Bellarine's short-stay villas or park your caravan at one of our spots. Whatever your ideal seaside escape involves, you'll have the freedom to experience it your way.

There's so much to sea!

Bigger adventures and extras, just for you



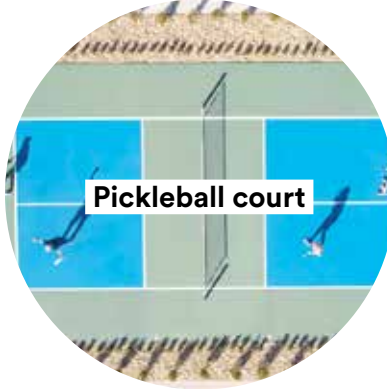
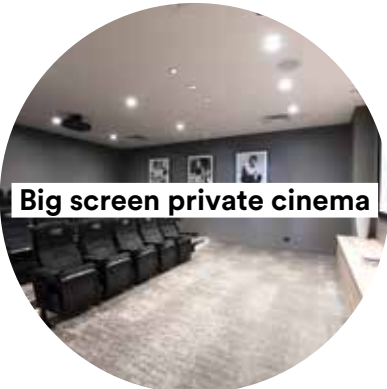
**Life's better when
you're feeling good.**

At Lifestyle Communities, we make it easy to get involved in activities that support your overall health and wellbeing.

Our Homeowner Experience Team deliver a wide range of activities, classes and community programs that help you live your best life.

You can take part as much or as little as you like, it's entirely up to you.

**LIFESTYLE
WELLNESS**



HOLIDAY VIBES ALL • YEAR ROUND

Every day feels like a holiday when you live by the bay

Are you ready to live like you're on holidays all year round? At Lifestyle Bellarine, you can spend your days soaking up the serene surroundings or spruce up your daily grind with access to world-class amenities a short stroll from your front door.

Whether you choose to spend your days by the bay or make the most of the incredible on-site amenities, Lifestyle Bellarine's waterfront location makes every day feel like a holiday.

Located at the heart of Lifestyle Bellarine is the multi-million dollar WiFi enabled Clubhouse, with plenty of space for you to relax, recharge or re-energise. From having lunch with friends in one of the large communal spaces, to enjoying some quiet time in the library or getting active in the gym, spending time in the Clubhouse will be an enjoyable experience.



“ Enjoy life at your own pace, in your happy place ”

YOUR ‘ME TIME’ WILL BE PERFECT

Whether you're a social butterfly or a humble homebody, Lifestyle Bellarine has it all.

There'll be plenty of opportunities to be social and get active with your fellow homeowners but there's absolutely no pressure to join in. This is your home. Your lifestyle. Your place of comfort. We encourage you to do things in your own time, at your own pace.

However you choose to spend your days, one thing's for certain: your 'me time' will be simply superb.



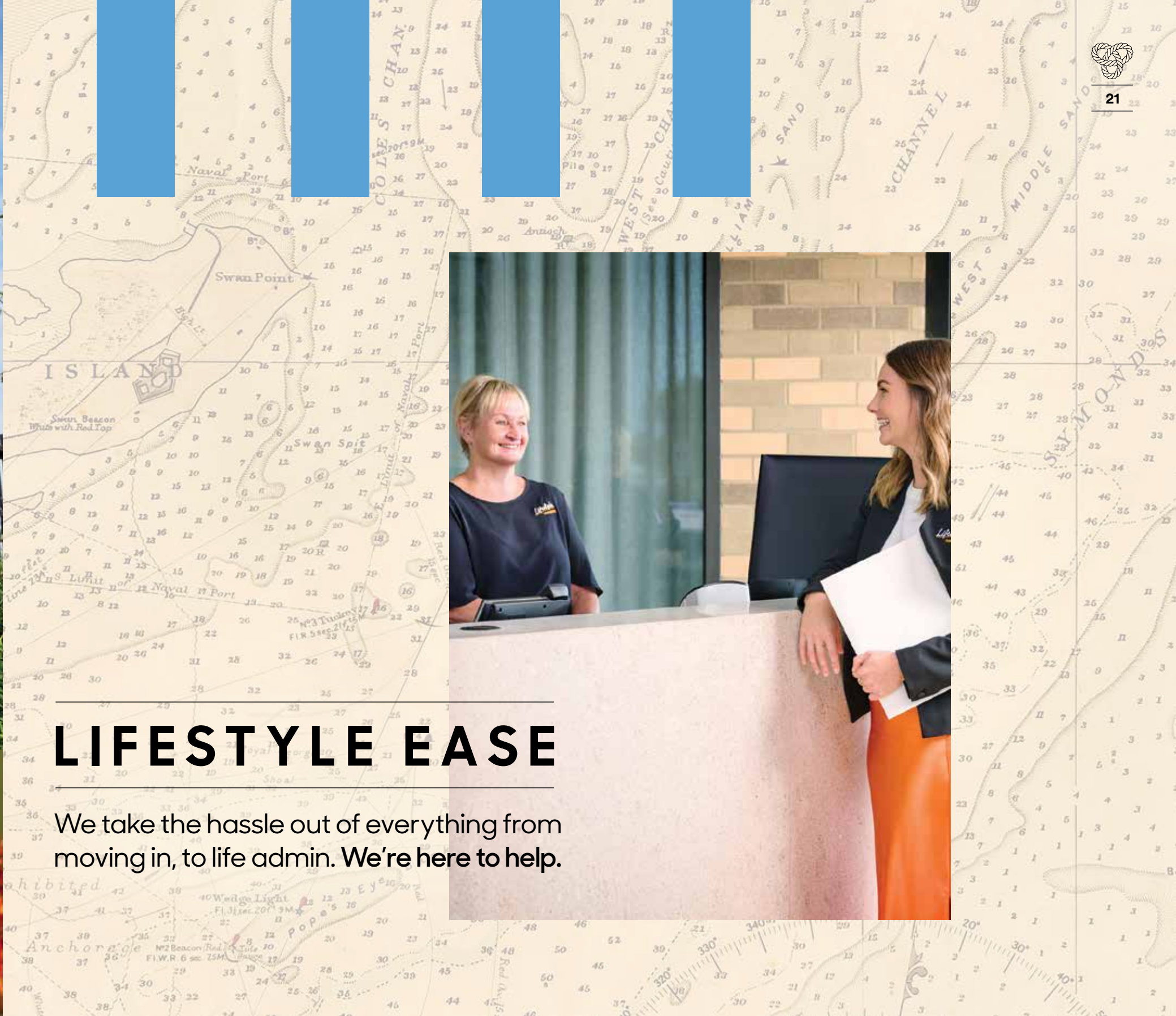
SPRUCE IT UP

If you're frond of having a perfectly pruned patch without the hassle, you're in for a tree-t! Our passionate on-site gardeners will keep the community gardens looking gorgeous all year round so you can enjoy the beautiful outdoor spaces without the hard work. Forget growing your garden by trowel and error – you'll feel a sense of re-leaf, knowing you can come home to a beautiful front garden without lifting a finger.

If tinkering in the garden really prickles your fancy, your new backyard provides a blank canvas to create your own natural sanctuary. Otherwise, you can select a low-maintenance landscaping package so your home is totally complete when you move in.

All that's left to do is to eat, drink and be rosemary!

“ Doesn't that sound just dandy? ”



LIFESTYLE EASE

We take the hassle out of everything from moving in, to life admin. We're here to help.

We help you move in
Moving to a new home can come with all kinds of hassles. Not here. From connecting your electricity and water, to handy hints about the local neighbourhood, we're here to help make your moving experience as effortless as possible. In fact, we can have everything up and running by the time you move in. It's all part of the service. We can also show you how to use all the new appliances in your home. Then once you've moved in, we can help you organise to have your moving boxes cleared away.

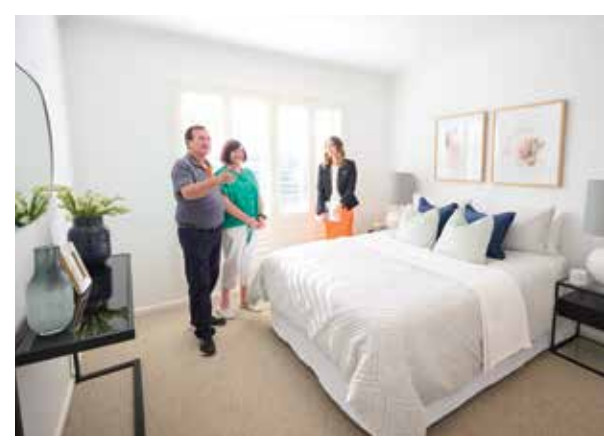
We give you the grand homeowner tour
Since your new community comes with a host of exciting amenities, we'll walk you through them all. From the incredible Clubhouse with its cinema, indoor pool and much more, to the many community activities on offer, we'll make sure you feel well-acquainted with your new community and help you personalise your new lifestyle.

We take care of your mail and parcels
If you don't feel like heading into the Post Office,

you don't have to. Our community management team can post and receive your mail for you from the Clubhouse. If you like shopping online, we can receive your parcels at reception and store them until you're ready to pick them up.

We keep you connected
Ahh, life admin, unfortunately we all have to do it. The only thing that makes it easier is having the tools to get it done! That's why we provide a business centre where you can do all your printing, faxing, scanning and online research. Make use of the free WiFi, computers and printer in the Clubhouse.

Your incredible Community Managers
You'll be pleased to know every Lifestyle Community has live-in Community Managers who are there to support you from the day you move in. From maintaining the beautiful facilities, to organising community events, they are on hand to ensure you have a wonderful experience.



Beautiful
waterfront living

You will adore every
last detail



THE UPSIDES OF DOWNSIZING TO Lifestyle Bellarine



Live a bigger life before and during retirement

Unlike a retirement village, you can remain working full or part-time while living like a king or queen at Lifestyle Communities. In other words, you can have your cake and eat it too!



Peace of mind when it's travel time

Head off travelling knowing that your home is safe and secure within a gated community, where Community Managers and neighbours are close by.



Holiday vibes all year round

With the Clubhouse, pool, cinema, gym, pickleball court, 25m swimming pool and so many other amenities at your fingertips, you'll enjoy holiday vibes every day!



Bring your pets

Your pets are welcome to call Lifestyle Communities home too. There's even a dog wash to keep your pampered pooch primped, preened, groomed and cleaned! How fur-nomenal!



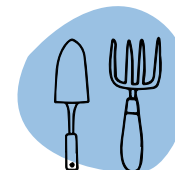
Feel safe and sound

Enjoy the peace of mind that comes with living in a safe, secure and peaceful gated community with on-site Community Managers.



More money in your back pocket

You'll enjoy financial freedom when you free-up the equity locked in your existing home. Plus, zero stamp duty and no council rates will help you save some serious cash!



Weed no more!

Say goodbye to pesky plants and nature-strip upkeep. Our dedicated gardening team will take care of your front garden and all common landscaped areas.



Good neighbours, good friends

Living at Lifestyle Bellarine means you'll enjoy the very best of friendly neighbourhood living, along with other like-minded people.

Smart Buy Guarantee, MAKING A SMART CHOICE

Downsizing to a new home is a big decision and we completely understand that you need time to think it through. After all, you want to be secure in the knowledge that you're making a safe and wise decision.



We give you time to sell

To help make the moving process easier, we give you plenty of time to sell your existing home.



We provide security of tenure

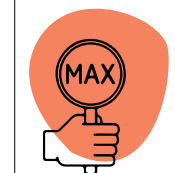
Your home comes with a 90-year secure lease for the land it's situated on. This gives you the right to enjoy the spectacular facilities for the next 90 years.



Our homes come with a 10-year structural warranty

Every new home also comes with a Post Move-in Maintenance period, two-year non-structural warranty and 10-year structural warranty that starts from your move in day.

All homes are constructed from high-quality materials and finishes selected to last the test of time. Our Post Move-in Maintenance period means we'll come and check for any defects or problems that may have occurred in your home around three months after you move in.



We cap the Deferred Management Fee

To help keep your home price, land and facilities contribution affordable, Lifestyle Communities recovers part of its cost for developing, running and maintaining the community when you sell your home. This payment is a scaled percentage of 4% of the selling price per year and is capped at a maximum of 20% from the fifth year.



We offer a 12-month satisfaction guarantee

If you decide to sell your Lifestyle Communities home within the first 12 months, you won't have to pay the Deferred Management Fee. Just make sure an agency agreement to sell your home has been signed within the first 12 months and that you settle within nine months.

" Our Smart Buy Guarantee gives everyone peace of mind "



" A never-ending holiday lifestyle "





A BIT ABOUT LIFESTYLE COMMUNITIES

We're champions for facilitating a bigger, more enhanced life for our homeowners. A cohort of like-minded retired, semi-retired and working downsizers who belong to a generation that's seen more change than any before; and possibly any to come.

We build communities because our homeowners have worked hard for what they have and they deserve affordable, beautifully-designed and low maintenance homes in concert with best-in-class amenities. We create communities because our homeowners haven't given up on returning to a time when they built strong communities around their own homes. We nurture the homeowners within our communities because they seek a space that's truly their own, that strikes the perfect balance between connection and privacy; independence and activity.

Like us, our homeowners rail against an earnestly bland existence or disappearing into a sea of sameness; the one-size-fits all approach that places

limitations on what's possible. Which is why we actively listen to them; to their hopes for now and their dreams for the future so the next time they ask, "what's next?" we've already been busy reimagining.

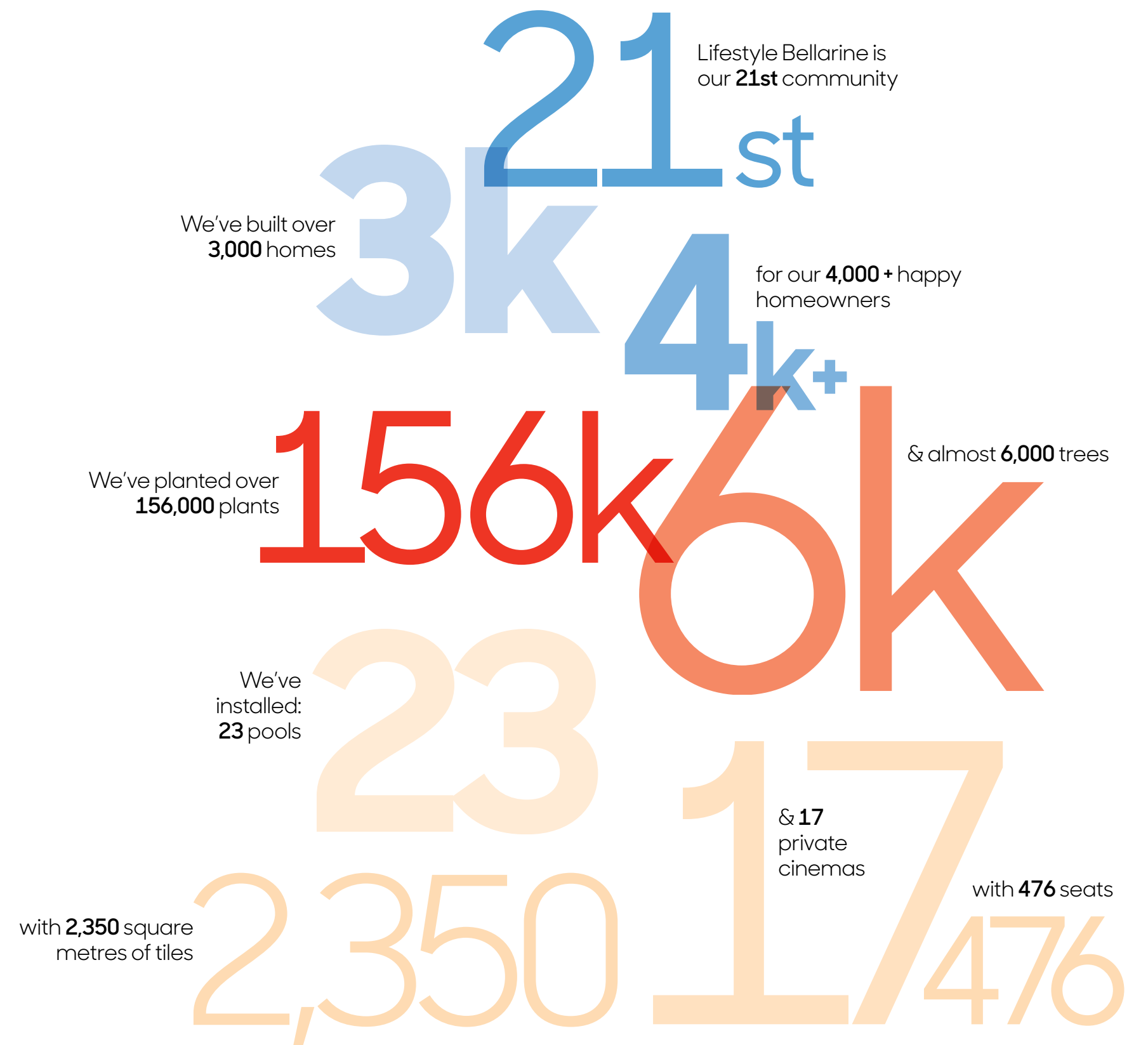
But most of all, we champion bigger, more enhanced lives for our homeowners because we know that reducing their property footprint takes a giant leap of faith. This is why we believe it's a privilege to walk alongside them as they elevate the next phase of their lives.

Like us, we believe they're just getting started. After all, they're the generation of change. And they're not done yet.

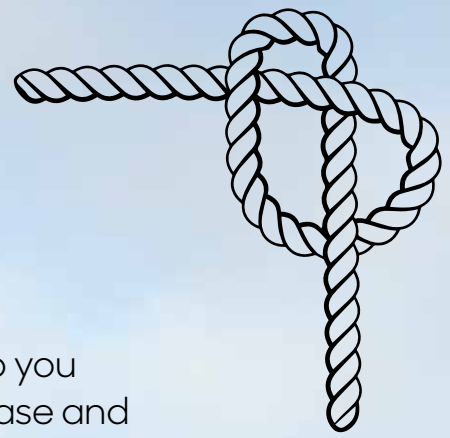


STRENGTH IN NUMBERS

They say practice makes perfect and we've had a lot of it. **Lifestyle Bellarine** will be built on a strong foundation of experience, innovation and expertise. We like to think the numbers speak for themselves...



It's safe to say we've had a lot of practice to perfect our craft ahead of building your new home and community at **Lifestyle Bellarine**.



NEXT STEPS

We simply can't wait to help you start living your lifestyle of ease and enjoyment. Our commitment to helping you live the lifestyle of a lifetime doesn't stop when you move into Lifestyle Bellarine – we're here for you every day.

Visit us at Lifestyle Bellarine.
711 Portarlington Road, Leopold

1300 50 55 60
lifestylebellarine.com.au



Visit us at
Lifestyle Bellarine.

711 Portarlington Road, Leopold

1300 50 55 60
lifestylebellarine.com.au

Lifestyle
BELLARINE