

# Lifestyle Ridgelea

BALANCED

LIVING

REDEFINED



INTRODUCING

# Lifestyle Ridgelea

**W**elcome to Lifestyle Ridgelea, a place where you'll experience a new kind of well-balanced lifestyle.

Within this innovative community, your life will become enriched by low-maintenance homes and multi-million-dollar amenities that have been purposefully re-invented to create effortless social, active and wellness opportunities that enhance every moment.

We've created Lifestyle Ridgelea to respond to the unique needs of the next generation of downsizers, who are busy, energetic and young-at-heart, with a desire to invest in their personal lifestyle and wellbeing. As a result, our community helps you strike the perfect balance between the daily grind, relaxation and adventure, by freeing up your time and placing world-class amenities at your feet.

Your new lifestyle will incorporate vocation, vacations and vitality in refreshing equilibrium.



'Where  
tranquillity  
meets vitality'









# A well balanced location

Located within Ridgelea Estate in Pakenham East, Lifestyle Ridgelea is set to be our eighth community in Melbourne's thriving South East Region. Striking the perfect balance of natural beauty and urban connectivity; established amenity and emerging opportunity, our next-generation neighbourhood promises a lifestyle of comfort, convenience and enjoyment.

## Effortless access to all the essentials

Lifestyle Ridgelea is less than a 10-minute drive from a range of local shopping precincts, including Cardinia Lakes Shopping Centre, Pakenham Central Marketplace and Heritage Springs Shopping Centre. Here you'll find everyday essentials from retail to restaurants, banks to bakeries, butchers and beauty salons, pharmacies and more.

## Natural escapes

Here's one for the nature and wildlife lovers! There are boundless opportunities to embrace nature both inside and outside our lush community. Beyond our perfectly maintained gardens and streetscapes, you'll discover a network of local parklands and reserves, including Eastone Reserve, BJ Wallis Gardens and Deep Creek Reserve. Showcasing picturesque wetlands, sprawling greenery, boardwalks, walking tracks and picnic spots, they're the perfect local destinations to walk, run, cycle, sit, relax and simply be amongst nature.

## A day on the green

If taking a swing at the local golf club is your idea of an ace day, you'll love living just 6 minutes from Deep Creek Golf Club. Belonging to the Deep Creek Reserve precinct, the complex also offers a large all-abilities playground and waterplay area perfect for the grandchildren, as well as a café and dining lounge where you can indulge in the Thursday Parma Night special.

## Live life, well-connected

Lifestyle Ridgelea is serviced by a well-established network of public transport services and arterial roads, keeping you connected to all your favourite destinations.

'The perfect blend of connectivity and tranquillity'

Bordered by the Princes Highway to the north, and Princes Freeway to the south, getting out and about is easy. From here, you can reach EastLink in 35 minutes, the Melbourne CBD in 60 minutes, and Tullamarine Airport in 80 minutes.

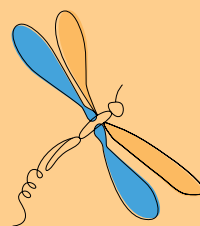
When you need to travel by train, Pakenham Station and Nar Nar Goon Station are less than a 10-minute drive away. For a different kind of train experience, the much-loved Puffing Billy steam railway is less than 30-minutes from home, providing a fantastic day out for every member of the family, accompanied by breathtaking views of the Dandenong Ranges.

## Wine not?

With a selection of renowned wineries at your feet, you won't need an excuse to treat yourself to a cheeky vino. Within 20 minutes you can be sippin' pretty at Cannibal Creek Vineyard, D'Angelo Estate Winery and Carlei Green Vineyards.

# Homely delights at Lifestyle Ridgelea





Our stylish, brand new homes showcase considered designs, quality fixtures and fittings, an abundance of natural light and the perfect balance of indoor and outdoor spaces. From sustainable features to standard inclusions that are anything but standard, our homes set the tone for your lifestyle of relaxation and leisure. Above all, our homes are designed to help you live a low maintenance and clutterfree life so you can focus on what's important – you!

**H**ere's just a small selection of inclusions that make the homes at Lifestyle Ridgelea a cut above the rest.

#### **Life is what you bake it**

Your modern kitchen showcases stone benchtops, stainless steel appliances, USB ports, LED strip lighting and a spacious walk-in pantry that caters to your every culinary need.

#### **Catch your Zs with ease**

Getting your beauty sleep will be a dream in your home's spacious bedrooms. Featuring either walk-in or built-in robes, there'll be plenty of space for storage.

#### **Wash, brush, floss and flush**

In your ensuite, you can find semi frameless shower screens or a walk-in shower, floor-to-ceiling tiles, a fully tiled shower ledge and floating cabinetry, and a shaving cabinet with LED lighting to help you feel showered in style.

#### **Breathe in the fresh air**

Pour yourself a cuppa and watch the world go by on your front veranda or backyard deck.

#### **Colour your home happy**

Your homes interior walls will be painted with Dulux Wash and Wear for a superior washable finish, with the ceilings and internal woodwork painted with Dulux EnvirO2 for an eco-friendly touch.

#### **Safe and secure**

Locking up your home has never felt safer with security mesh doors and flywire to all rear sliding doors.

#### **Plantation sensation**

Let the light in or shut it out, with beautiful plantation shutters to the front façade windows of your home.

#### **Make your home your own**

Not only will you have the ability to choose from a range of floorplans to suit your lifestyle and budget, you'll also have the freedom to select finishes that reflect your unique style. From the colour scheme on the walls, to the tiles and flooring; making your home your own is superbly simple.

#### **Built to last**

Constructed by reputable builder Todd Devine Homes, your new home comes with a 10-year structural warranty and a two-year non-structural guarantee.



**'Every last detail is spot on'**



# Find your perfect spot

If you're looking for ultimate street appeal, a remarkably peaceful place or a location within walking distance of the best-in-class amenities, there's a spot for you. For enhanced comfort and natural light within your home and garden, you may like to consider

the layout of your home and compare it with the orientation of your spot. Our communities offer function and flair from every angle, so whatever area you decide, rest assured it will provide an incredible living experience.

- **A1 Lots**  
12.65m wide x 18.0m long
- **A2 Lots**  
13.65m wide x 18.0m long
- **A3 Lots**  
14.65m wide x 18.0m long
- **B Lots**  
10.0m wide x 18.0m long
- **D Lots**  
12.65m wide x 10.75m long



# Powered for *the future*

All of these eco-friendly features help us to ensure the future of our communities remains bright – and affordable!

**L**ifestyle Ridgelea and all future communities will be powered solely by electricity and renewable energy to minimise our impact on the environment and reduce our homeowners' energy bills. We're dedicated to ensuring our communities are sustainable for the future, which means you'll find an array of innovative and energy-efficient features within your home and your community.

## More power to you!

Your home and all the homes in the community, will be powered by a community solar and battery microgrid. Helping to power your home, while simultaneously saving the environment and lowering your energy bills by up to 30%! Can you feel the power?

## Electric heat you can't beat

Cooking in your new kitchen will be easier than ever with an electric oven and sleek, induction cooktop. We're confident you'll love your cooktop thanks to its even heat distribution and immediate temperature control. Induction cooking is more efficient than gas burners, reducing energy consumption by up to 70%.

## Get smart and save

Make your brand new home a smart one with Smart Home automation, allowing you to use voice commands and technology to control your lights, heating/cooling and other electrical devices.

## Keep cool and carry on

Maintaining the perfect temperature within your new home will be a cinch with the Haier hi-wall split system or electric ducted heating and cooling.

## Feeling hot, hot, hot!

Heat your water more efficiently with a Chromagen 170 litre electric heat pump that uses up to 65% less energy than conventional water heaters.

## Your electric ride

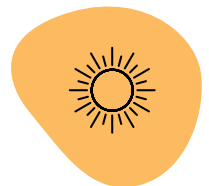
Get out and about in sustainable style with the Hyundai all-electric IONIQ 5. If you prefer to pedal your way around, shared electric bikes will be yours to enjoy.

## Make fast connections

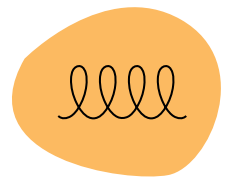
Your new home will be connected by high-speed optic fibre, giving you access to lightning fast internet.



**Save energy & money**



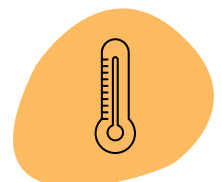
**Powered by solar & battery microgrid**



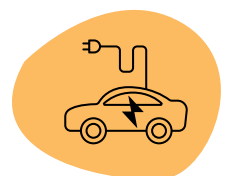
**Induction cooktop**



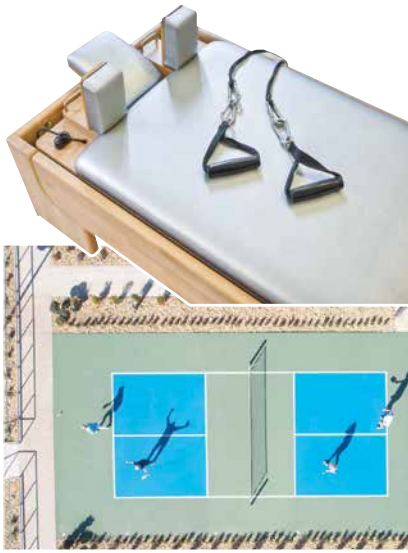
**Smart home automation**



**Energy efficient heating & cooling**



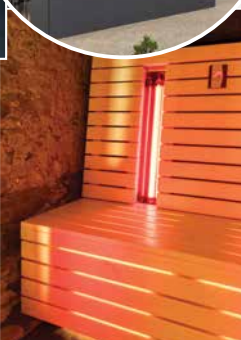
**Shared electric car and bikes**



**An extension of  
your own home**



Take a peek at the  
well-balanced  
lifestyle you seek



**A restful retreat  
to call your own**





# Holiday vibes all year round

Inspired by the evolving needs of the next generation of downsizers, we've reimagined the traditional clubhouse experience to deliver a spectacular oasis.

Comprised of a series of interconnected spaces purposefully designed for social connection, relaxation and wellness, each zone invites you to spend your time as you please, so you can live life in complete balance.

The Clubhouse acts as an extension of your home, where you can experience your own perfect blend of interaction and privacy; energy and serenity. A personal escape to immerse your senses, connect with others or simply unwind.

Prepare to embark on a sensory journey with signature scents, considered playlists and iconic designs that have been thoughtfully curated to enrich every moment.

'Reset your body and  
mind with a swim in  
the indoor pool'



# *Lifestyle*

## RIDGELEA

1300 50 55 60 | [lifestyle.ridgelea.com.au](https://lifestyle.ridgelea.com.au)

We are temporary located in  
The Clubhouse at Lifestyle Meridian:

9 Twynam Road, Clyde North, VIC 3978