

The Kingfisher

3 

2 

2 



New brochures
coming,
contact sales
consultant for
more information

from
\$459,500

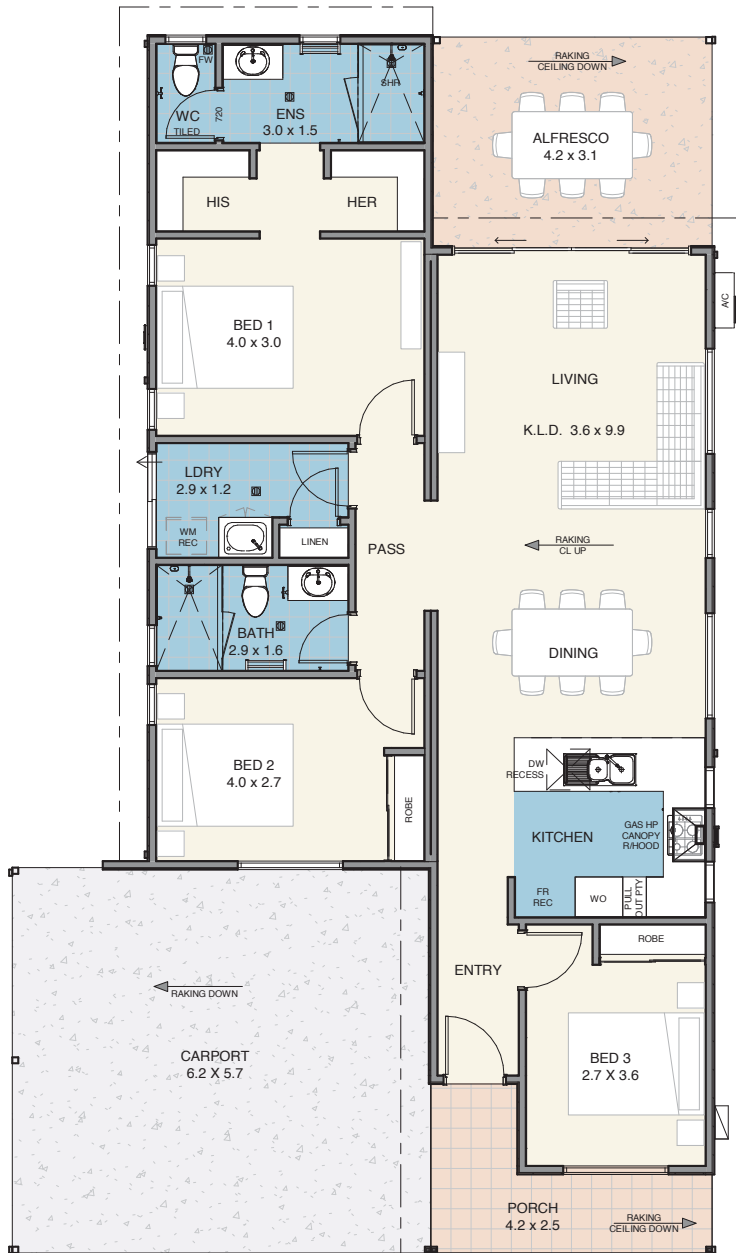
A place to call home

The Kingfisher is our largest home, with 3 bedrooms spaced throughout to provide peace and privacy to all. The master suite boasts an ensuite plus his & hers WIR while bedrooms 2 & 3 have BIR. The kitchen, dining, living, and alfresco all flow together to create the ultimate zone for indoor/outdoor living.



EDENLIFE[®]
AUSTRALIND

The Kingfisher



Specifications

House	109m ²
Alfresco	13m ²
Carport	36m ²
Porch	7m ²

Features

- Reverse cycle split system air-conditioning unit to living area
- Natural gas hotplate & fan forced electric oven
- Continuous flow hot water unit
- Full internal & external painting
- Built in robes to bedrooms
- Carpet to bedrooms
- Vinyl planking to living areas
- Flyscreens to windows
- Blinds to windows
- LED lighting throughout
- Tiled splashback to kitchen
- Soft close drawers throughout
- Stone benchtops
- Foldaway clothesline
- Full insulation



Updated 27th March 2023

Disclaimer: Edenlife reserves the right to change the information in this publication at any time without notice.

For further information

T 08 9423 5131

E live@edenlife.com.au

www.edenlife.com.au



EDENLIFE[®]
AUSTRALIND