

# The Ibis

2 

1 

1 



**New brochures  
coming,  
contact sales  
consultant for  
more information**

from  
**\$349,500**

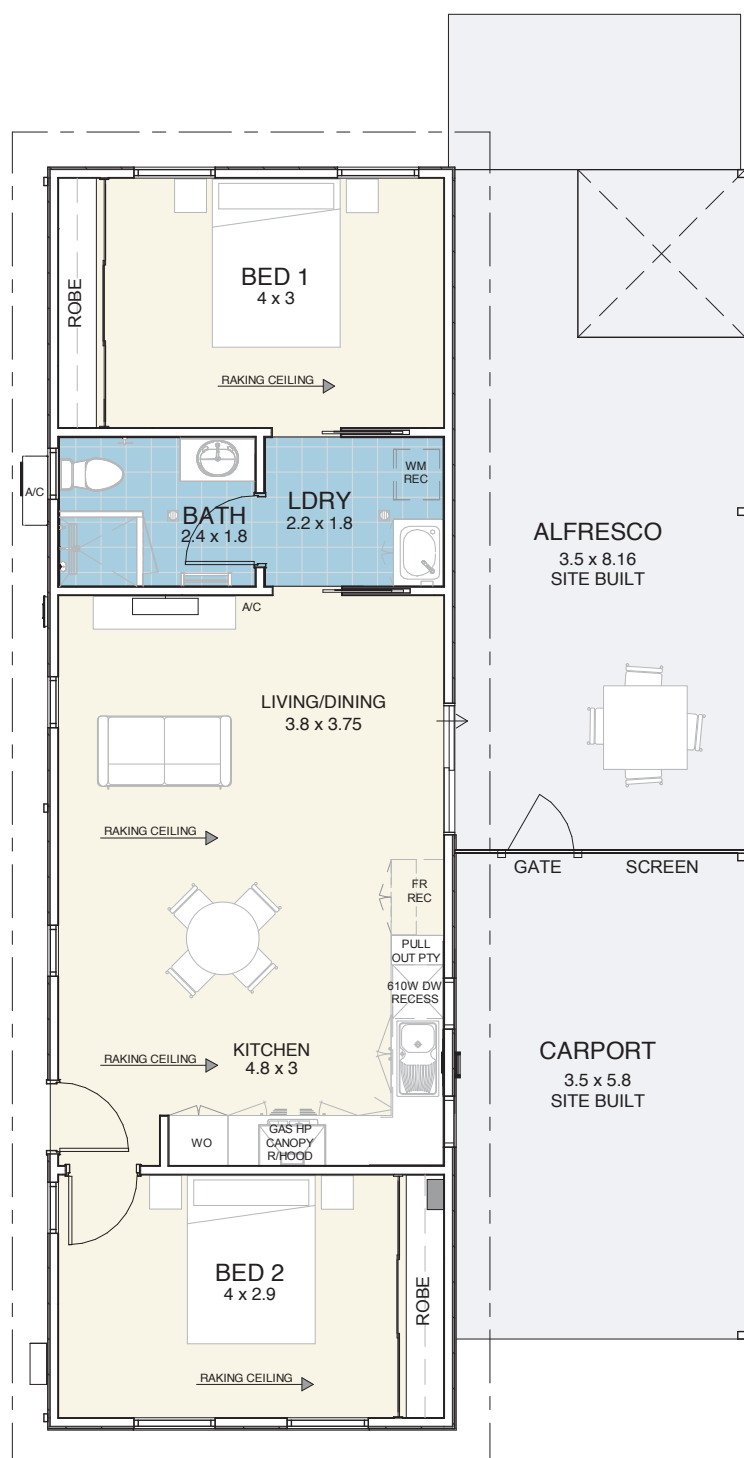
## A place to **call home**

The two bedrooms at opposite ends of the home allow for comfortable living inside while the generously sized alfresco area makes it perfect for outdoor living and entertaining on a grand scale.



**EDENLIFE®**  
AUSTRALIND

# The Ibis



## Specifications

House.....	72m <sup>2</sup>
Alfresco .....	28m <sup>2</sup>
Carport .....	19m <sup>2</sup>

## Features

- Reverse cycle split system air-conditioning unit to living area
- Natural gas hotplate & fan forced electric oven
- Continuous flow hot water unit
- Full internal & external painting
- Built in robes to bedrooms
- Carpet to bedrooms
- Vinyl planking to living areas
- Flyscreens to windows
- Blinds to windows
- LED lighting throughout
- Tiled splashback to kitchen
- Soft close drawers throughout
- Stone benchtops
- Foldaway clothesline
- Full insulation



Updated 27<sup>th</sup> March 2023

Disclaimer: Edenlife reserves the right to change the information in this publication at any time without notice.

For further information

T 08 9423 5131

E live@edenlife.com.au

www.edenlife.com.au



**EDENLIFE**<sup>®</sup>  
AUSTRALIND