

The Pelican

2 

1.5 

2 



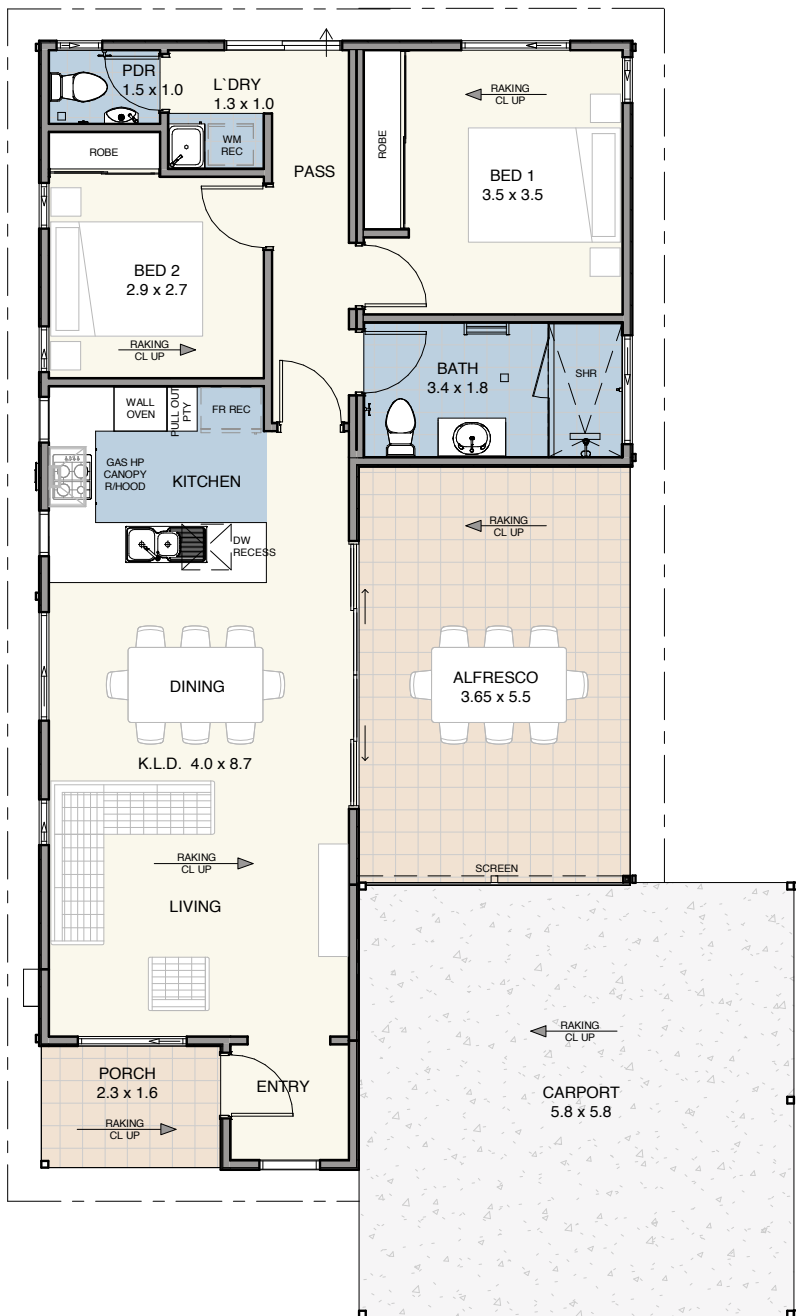
from
\$429,500

A place to call home

The well-designed U-shaped kitchen looks out across the dining and living areas while also providing easy access to the spacious alfresco. The bedrooms are tucked away from the living areas, offering a quiet retreat from the rest of the home.


EDENLIFE®
AUSTRALIND

The Pelican



Specifications

House.....	80m ²
Alfresco	20m ²
Carport	34m ²
Porch	4m ²

Features

- Reverse cycle split system air-conditioning unit to living area
- Natural gas hotplate & fan forced electric oven
- Continuous flow hot water unit
- Full internal & external painting
- Built in robes to bedrooms
- Carpet to bedrooms
- Vinyl planking to living areas
- Flyscreens to windows
- Blinds to windows
- LED lighting throughout
- Tiled splashback to kitchen
- Soft close drawers throughout
- Stone benchtops
- Foldaway clothesline
- Full insulation

Updated 30th January 2024

Disclaimer: Edenlife reserves the right to change the information in this publication at any time without notice.

For further information

T 08 9423 5131

E live@edenlife.com.au

www.edenlife.com.au



EDENLIFE®
AUSTRALIND