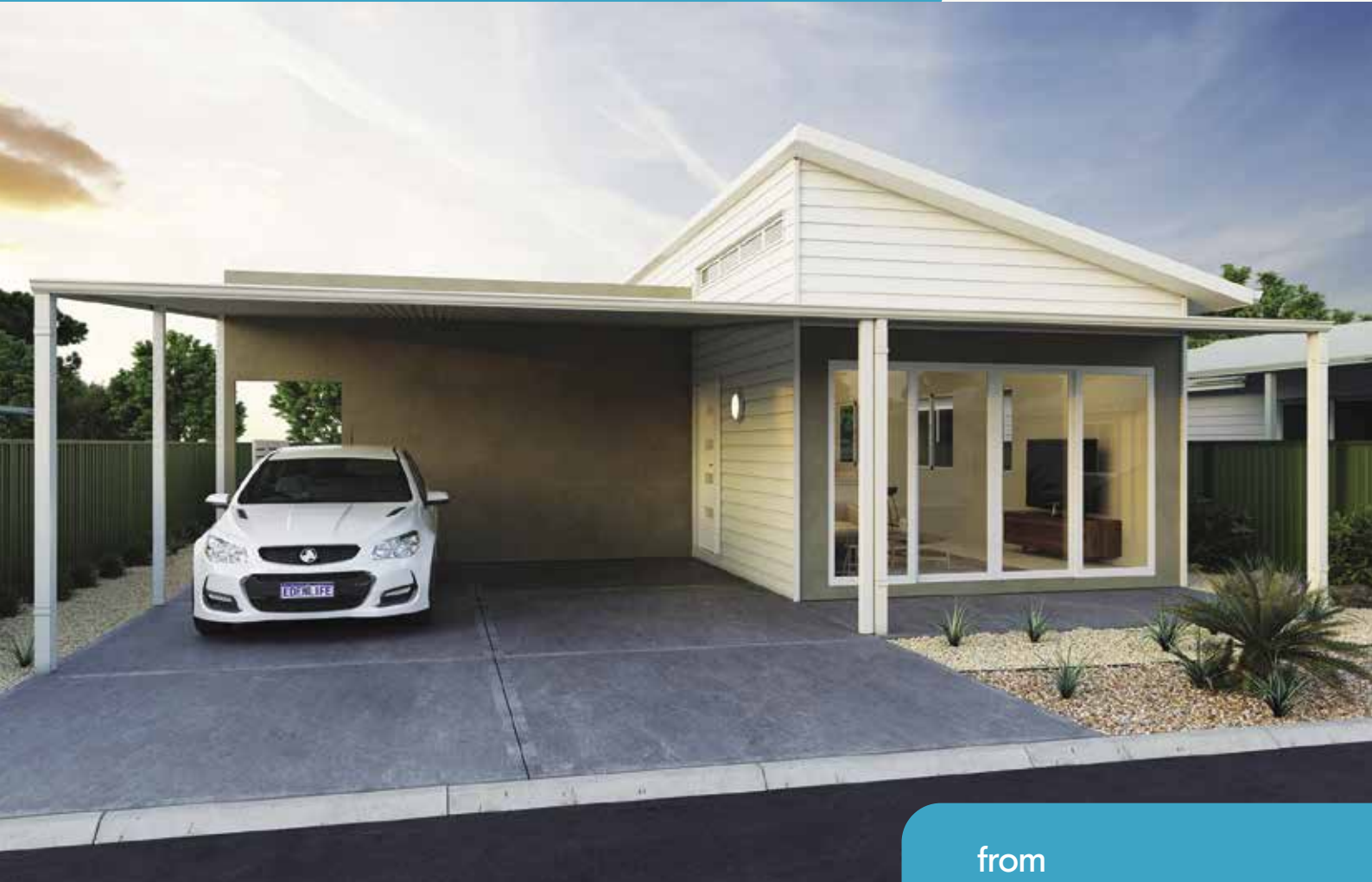


The Harrier

2 

1.5 

2 



from
\$455,500

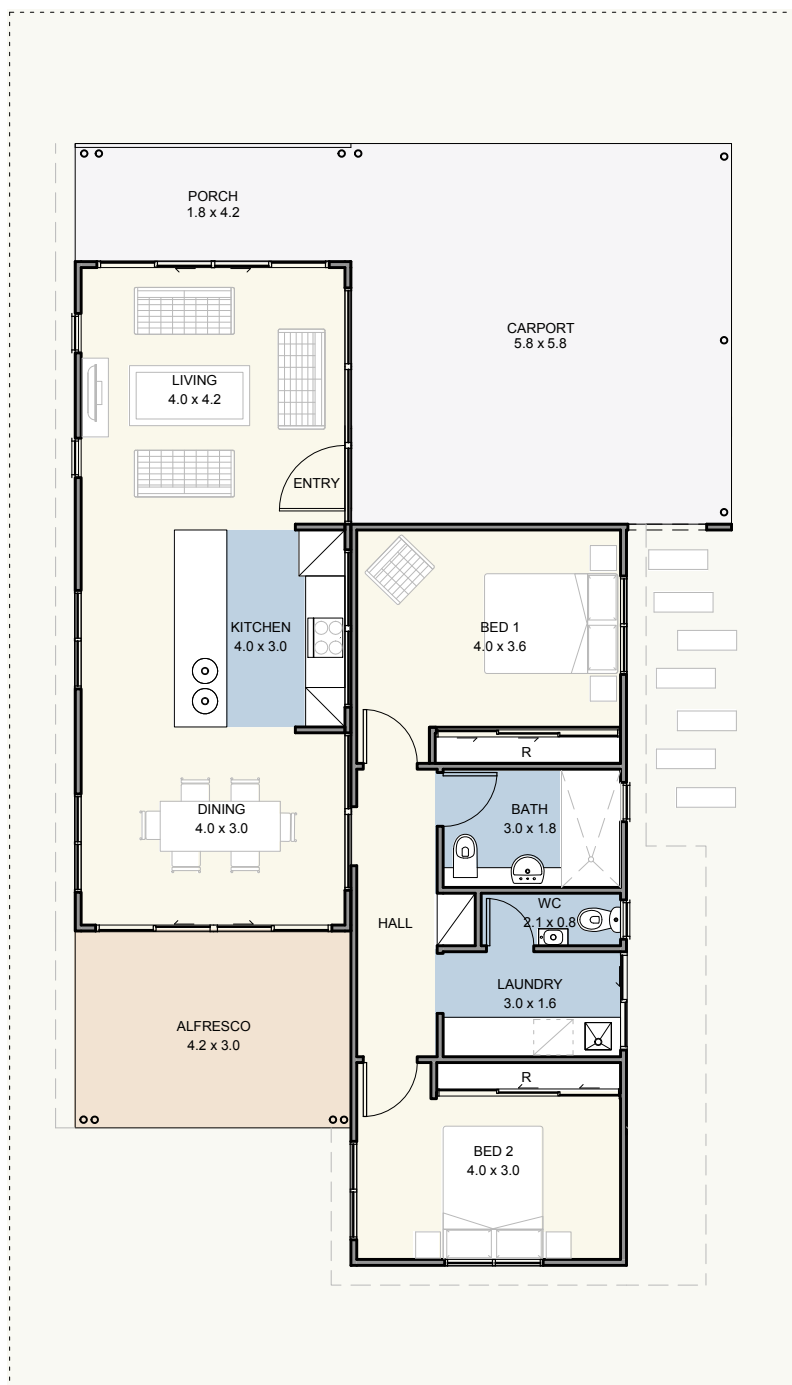
A place to call home

The two distinct zones of this home offer the ultimate in peaceful living. The living/kitchen/dining flowing out onto the alfresco align down one side of the home, with the bedrooms, situated at opposite ends of the hallway, down the other. The spacious bathroom and laundry will not disappoint nor will the generously sized robes in the bedrooms.



EDENLIFE[®]
AUSTRALIND

The Harrier



Specifications

House	90m ²
Alfresco	13m ²
Carport	34m ²
Porch	8m ²

Features

- Reverse cycle split system air-conditioning unit to living area
- Natural gas hotplate & fan forced electric oven
- Continuous flow hot water unit
- Full internal & external painting
- Built in robes to bedrooms
- Carpet to bedrooms
- Vinyl planking to living areas
- Flyscreens to windows
- Blinds to windows
- LED lighting throughout
- Tiled splashback to kitchen
- Soft close drawers throughout
- Stone benchtops
- Foldaway clothesline
- Full insulation



Updated 30th January 2024

Disclaimer: Edenlife reserves the right to change the information in this publication at any time without notice.

For further information

T 08 9423 5131

E live@edenlife.com.au

www.edenlife.com.au



EDENLIFE[®]
AUSTRALIND