



# Roden Cutler Lodge

## *Residential Care*



**Key Features Statement**  
**July – September 2024**





### 10D Edward Street, Gordon

**Roden Cutler Lodge is located in Sydney's north in the suburb of Gordon. On site with our Gordon Quarter retirement residences, the residential aged care is home to 107 residents. The attractive setting and expansive outdoor areas create many peaceful areas for residents to sit and stroll.**

- Thoughtfully designed to support the delivery of person-centred care
- Attractive and spacious accommodation with high quality furnishings and fittings
- Residents live in small community groups, each with its own spacious lounge, resident kitchen and dining areas
- Chaplains providing pastoral care, church services and other fellowship activities
- Nursing staff are available 24 hours a day
- A dedicated life enrichment team facilitates daily and regular activities for residents including clubs, groups and outings

#### **Palliative care**

- If required palliative care is available

#### **Respite care**

- Emergency respite: subject to availability



# Rhythm of Life<sup>®</sup>

**At Anglicare we believe person-centred care is the foundation of quality aged care and that there is no ‘one size fits all’ solution when it comes to giving you the support you need.**

It's not about fitting into our routine, but rather maintaining your own along with your independence and choice on how you would like to live every day. We believe you should receive personalised care that considers your past, your interests, and your preferences.

That is why we have developed a unique program called Rhythm of Life<sup>®</sup>. Below are the eight principles of Rhythm of Life<sup>®</sup> that guide everything we do in our residential care homes to empower you to make informed decisions and enrich your quality of life.

## Everybody



**Has a unique story.**



**Deserves honour and respect.**



**Will be supported to make decisions relating to their life.**



**Will be encouraged to maintain and develop relationships that are meaningful.**



**Will be provided with holistic care that meets their individual needs.**



**Will be supported to feel safe, comfortable, welcome and ‘at home’.**



**Will have their needs and preferences acknowledged and valued.**



**Will be shown the love of Jesus.**

# Common areas

## Dining areas / Resident kitchen

- Each resident community area has its own kitchen and dining space
- Tables and chairs grouped in large and small settings to provide communal or a more private dining experience
- Large windows provide plenty of natural light
- An accessible toilet with call button is provided close by
- A large self-serve resident kitchen on each level overlooks the dining rooms

## Gowrie Café

- Limited-service café in the lobby area with outdoor seating
- Open 3 days a week, brunch to lunch

## Bertie Lloyd Chapel / Multi-purpose room

- Located on level 2
- Rooms can be combined for larger functions
- Equipped with audio-visual system
- Access to a large terrace with BBQ facilities





## Common areas (continued)

### Family dining rooms

- Dining spaces are available for families to book for private dining or family gatherings on each level

### Hairdressing salon

- A retro-inspired salon is located on level 2 and includes hairdressing and spa services

### Laundries

- Each resident community area has a fully equipped laundry for residents to do their personal laundry if they wish
- Otherwise, laundry is done by staff at our on-site laundry facility

### Lounge and sitting areas

- Each level has at least one lounge area for pursuing different interests
  - Music lounge with baby grand piano
  - Sports lounge with an outdoor green for bowls or golf
  - Reading and sewing lounge
- Travel lounge with terrace access
- All lounge areas include large flat-screen televisions with pay TV, magazines, books and DVDs
- There are also smaller sitting areas and sun rooms for quiet pursuits or meeting with family

### Multi-purpose rooms

- Located on each level near the care station, open-plan rooms with built-in sink and cabinetry, can be made private with partitioning walls
- Floor to ceiling windows with sheer and block out curtains offer natural light
- All rooms feature tables, chairs and a wall-mounted SMART television

### Outdoor areas

- Level 1 has 2 enclosed courtyards with park benches and raised garden beds
- Level 2 terrace, outside the chapel, features BBQ facilities, with bush views
- Garden paths are accessed from the level 2 lounge and a small sitting room
- Level 3 terrace, accessed by the travel lounge, features BBQ facilities and raised garden beds

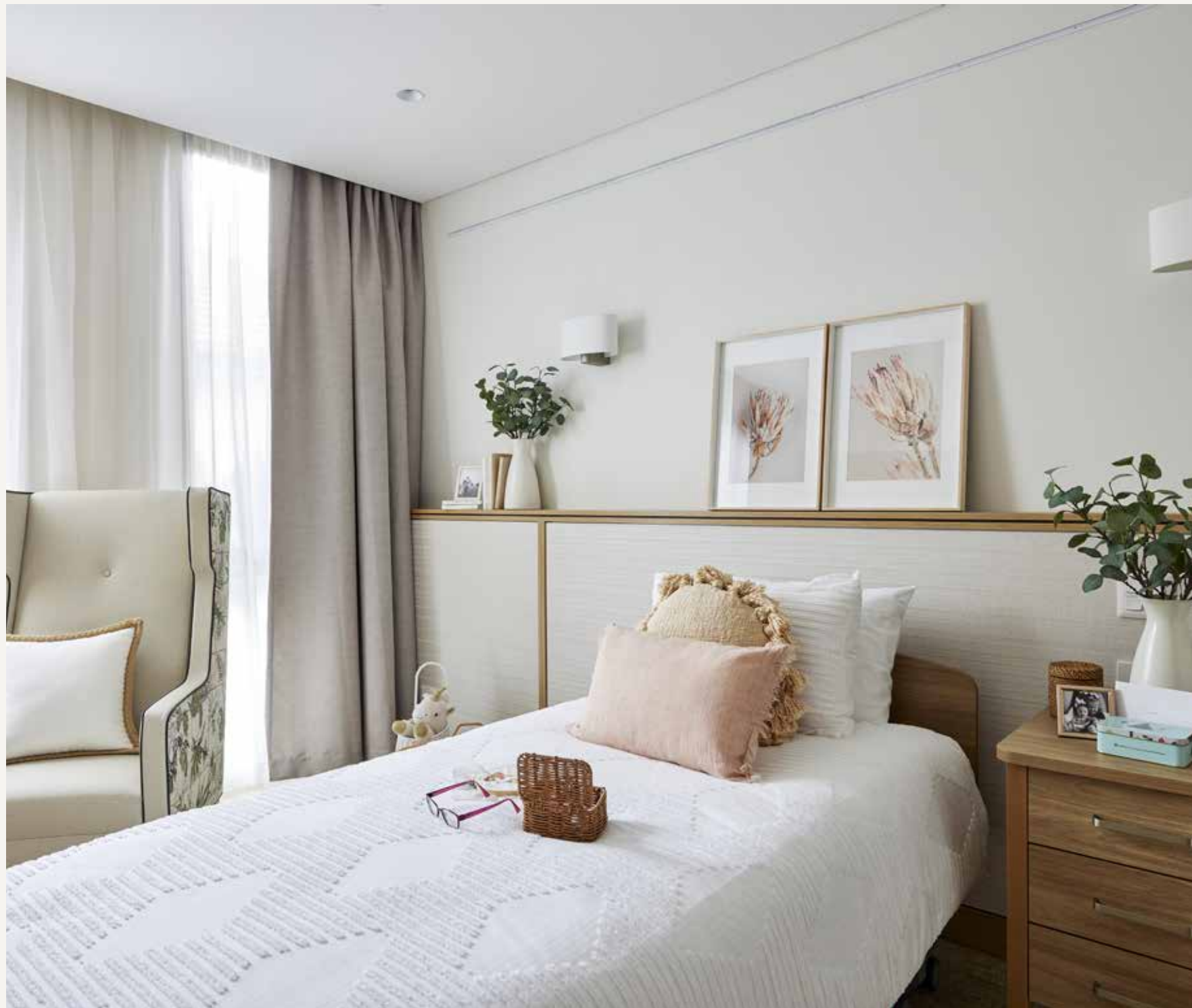
### Wellness Centre

- Exercise equipment such as a treadmill, recumbent bike, and an active passive trainer for upper and lower limbs
- Physiotherapy tools such as an electric physiotherapy bed, steps and a specialised wall for elastic bands and other tools offer on-site support





# Private rooms



**Each private room features built in cabinetry, ensuite bathroom and thoughtful design features.**

## **Quality, condition, size and amenity**

- King Single electric bed
- Bed coverings, including sheets, pillows and bed spread. Residents are welcome to bring their own.
- Upholstered armchair, one lockable bedside table and one over-bed table
- Built-in cabinetry with sink, shelving, hanging space, lockable drawer, display shelving
- Wall-mounted SMART television
- 2 USB connections and multiple power outlets
- Adjustable wall sconce lights
- Personal air conditioning and ceiling fan
- Windows with block-out and sheer curtains
- Emergency call buttons and pendant

## **Bathroom**

- Laminate flooring, floor to ceiling tiled walls with a marble-like feature wall
- Wheelchair accessible with grip rails next to the toilet and shower as required
- Vanity area with bench space and storage
- Emergency call button

## **Number of residents per room**

- One

# Additional services

**Anglicare offers higher standards of hospitality services for residents. For an additional daily payment, residents receive access to an additional range of services provided over and above those listed in the previous Care and Services section. These include, but are not limited to:**

## **Enhanced Dining Experience**

- On-site chef overseeing resident dining experience
- Hot cooked breakfast daily with extended hours
- Extensive lunch menu – choice of at least two main courses, other options including soups, salads, light meals, sandwiches & dessert
- The option of an alcoholic beverage with meals
- Variety of dinner choices – hot meal, soups, salads, sandwiches & selection of light meals
- Resident Snack Bar 24/7
- After-hours menu available upon request
- Happy hour
- Choice of dining venues
- Moulded food for pureed diets
- Special meal with seasonal menu & curated wines







## Additional services (continued)

### Technology and Engagement

- WiFi internet for residents & their visitors (up to 3 devices)
- CareApp to connect residents, carers and families
- Tovertafel interactive technology for enhancing cognitive and memory support
- BrainTrainerPlus™ digital experience to encourage active minds
- iPads/Tablets for resident use
- Wall mounted SMART TV in resident rooms
- Pay TV in residents' rooms and common areas
- Robotic therapy animal
- Evoke® TV & Radio channels available in resident's room
- King single bed

### Lifestyle and Interests\*

- Exercise sessions
- Live entertainment
- Animal and pet visits
- Armchair travel sessions
- On-site gym/physiotherapy room
- Visiting artist
- Professionally printed clothing labels
- Capital Guardians account
- Bus outings – some lunches or ticket charges at additional cost to resident
- Church to you
- On-site Chaplain



All new residents are charged the daily Additional Services fee\*\* as a condition of entry. This is a package, and individual services are not offered separately.

Residents paying the Additional Services fee are reviewed regularly (or as requested by the resident or person responsible) for their ability to access and benefit from the Additional Services.

Full details are in the Resident Agreement.

\* All activities subject to public health orders

\*\* Additional Services fee is outlined on the pricing page for each home

# Pricing

## Room types

Room type	Number of rooms	Size (m²)	Description
A	107	25.35 - 29.68	Private suite with ensuite bathroom

## Payment options

Residents can choose to pay for their accommodation by a refundable accommodation deposit (RAD), a daily accommodation payment (DAP), or a combination of both.

**A RAD is paid as a lump sum amount.**  
**A DAP accrues daily and is paid periodically, for example fortnightly.**

**A combination payment includes both a partial lump sum (RAD) and daily payments (DAP).**

Where a resident doesn't pay the RAD in full, they can elect to have their DAP deducted from their contribution. Where this occurs, the amount of DAP will gradually increase as their contribution decreases. As the RAD contribution decreases, the resident may be required to make a further contribution if the deductions are to continue.

## Pricing

Room type	Aged care pricing commissioner approved*	Maximum refundable accommodation deposit (RAD)	Maximum daily accommodation payment (DAP)**	10% RAD	90% DAP
A	Yes	\$1,200,000	\$274.85	\$120,000	\$247.36

Additional Services Fee\*\*\* – \$71.50 per day or \$5.95 per day for fully supported residents

\* Applicable to accommodation valued over \$550,000

\*\* DAP prices subject to change quarterly to align with government quarterly interest rate changes

\*\*\* For new residents entering the residential care home from July 2023, the Additional Service Fee will be indexed on an annual basis in July of each year based on the CPI increase for the previous year. This applies to all fully and partially supported residents.







Anglicare

For more information please contact us.

**[anglicare.org.au/agedcare](http://anglicare.org.au/agedcare)**

**1300 111 278**