



Porter Lodge

Residential Care



Key Features Statement
July – September 2024



2 Sark Grove, Minto

Porter Lodge is located in Sydney's south-west in the suburb of Minto. On site with our Minto Gardens retirement village, Porter Lodge is home to 100 residents. The attractive setting and expansive outdoor areas create many peaceful areas for residents to sit and stroll.

- Thoughtfully designed to support the delivery of person-centred care
- Attractive and spacious accommodation with high quality furnishings and fittings
- Residents live in small community groups, each with its own spacious lounge, resident kitchen and dining areas
- Chaplains providing pastoral care, church services and other fellowship activities
- Nursing staff are available 24 hours a day
- A dedicated life enrichment team facilitates daily and regular activities for residents including clubs, groups and outings

Palliative care

- If required palliative care is available

Respite care

- Emergency respite: subject to availability

Rhythm of Life[®]

At Anglicare we believe person-centred care is the foundation of quality aged care and that there is no ‘one size fits all’ solution when it comes to giving you the support you need.

It's not about fitting into our routine, but rather maintaining your own along with your independence and choice on how you would like to live every day. We believe you should receive personalised care that considers your past, your interests, and your preferences.

That is why we have developed a unique program called Rhythm of Life[®]. Below are the eight principles of Rhythm of Life[®] that guide everything we do in our residential care homes to empower you to make informed decisions and enrich your quality of life.

Everybody



Has a unique story.



Deserves honour and respect.



Will be supported to make decisions relating to their life.



Will be encouraged to maintain and develop relationships that are meaningful.



Will be provided with holistic care that meets their individual needs.



Will be supported to feel safe, comfortable, welcome and ‘at home’.



Will have their needs and preferences acknowledged and valued.



Will be shown the love of Jesus.

Common areas

Dining areas

- Each resident community area has its own kitchen/dining space
- Tables and chairs for communal dining
- Large windows provide plenty of natural light
- An accessible toilet with call button is provided close by
- A number of private meeting rooms are available for families to book for private dining or family gatherings

Activities room / Chapel

- Located on the ground floor – chapel and activity rooms
- Rooms can be combined for larger functions
- Equipped with audio-visual system

Café / Waiting areas

- Full-service café in the lobby area with indoor and outdoor seating
- Services provided will include a fee





Common areas (continued)

Hairdressing salon

- Purpose-built salon located on the ground floor
- Services provided will include a fee

Laundries

- Each resident community area has a fully equipped laundry for residents to do their personal laundry if they wish
- Otherwise, laundry is done by staff at our on-site laundry facility

Lounge and sitting areas

- Each resident community has its own lounge area with chairs sufficient for all residents in the area
- Lounge areas include large flat-screen televisions, magazines, books and DVDs
- There are also smaller sitting areas for quiet pursuits

Terrace and outdoor areas

- A number of outdoor terrace areas with outdoor furniture for residents and their guests to enjoy
- Set within the extensive landscaped gardens surrounds of Minto Gardens

Physiotherapy

- Located on the second and third floors



Private rooms



Each private room features built in cabinetry, ensuite bathroom and thoughtful design features.

Quality, condition, size and amenity

- King Single electric bed
- Bed coverings, including sheets, pillows and bed spread. Residents are welcome to bring their own
- Upholstered armchair, one lockable bedside table and one over-bed table
- Built-in cabinetry with shelving, hanging space, lockable drawer, display shelving
- Wall-mounted SMART television
- Computer connection
- Personal air conditioning and ceiling fan
- Windows with block-out and sheer curtains
- Emergency call buttons and pendant

Design Features

- Layout is designed to minimise travel distance for residents
- Centralised dining and community rooms on all floors

Bathroom

- Laminate flooring and tiled walls in shower
- Wheelchair accessible with grip rails next to the toilet and shower as required
- Vanity area with bench space and storage
- Emergency call button

Number of residents per room

- One

Additional services

Anglicare offers higher standards of hospitality services for residents. For an additional daily payment, residents receive access to an additional range of services provided over and above those listed in the previous Care and Services section. These include, but are not limited to:

Enhanced Dining Experience

- Hot cooked breakfast daily with extended hours
- Extensive lunch menu – choice of at least two main courses, other options including soups, salads, light meals, sandwiches & dessert
- The option of an alcoholic beverage with lunch
- Variety of dinner choices – hot meal, soups, salads, sandwiches & selection of light meals
- Resident Snack Bar 24/7
- After-hours menu available upon request
- BBQs &/or special occasion meals in addition to routine social & cultural meals & events
- Happy hour
- Choice of dining venues
- Moulded food for pureed diets



Additional services (continued)

Technology and Engagement

- WiFi internet for residents & their visitors (up to 3 devices)
- CareApp to connect residents, carers and families
- Tovertafel interactive technology for enhancing cognitive and memory support
- BrainTrainerPlus™ digital experience to encourage active minds
- iPads/Tablets for resident use
- Robotic therapy animal
- Evoke® TV & Radio channels available in resident's room
- Pay TV in common areas
- King single bed

Lifestyle and Interests*

- Musical playlist for residents – available on request
- Live entertainment
- Animal and pet visits
- Armchair travel sessions
- Art therapy
- On-site gym/physiotherapy room
- Professionally printed clothing labels
- Capital Guardians account
- Bus outings – some lunches or ticket charges at additional cost to resident
- Church to you
- On-site Chaplain
- Exercise sessions



All new residents are charged the daily Additional Services fee** as a condition of entry. This is a package, and individual services are not offered separately.

Residents paying the Additional Services fee are reviewed regularly (or as requested by the resident or person responsible) for their ability to access and benefit from the Additional Services.

Full details are in the Resident Agreement.

* All activities subject to public health orders

** Additional Services fee is outlined on the pricing page for each home

Pricing

Room types

Room type	Number of rooms	Size (m²)	Description
A	100	22.6 - 27.8	Standard private room with ensuite bathroom

Payment options

Residents can choose to pay for their accommodation by a refundable accommodation deposit (RAD), a daily accommodation payment (DAP), or a combination of both.

A RAD is paid as a lump sum amount.
A DAP accrues daily and is paid periodically, for example fortnightly.

A combination payment includes both a partial lump sum (RAD) and daily payments (DAP).

Where a resident doesn't pay the RAD in full, they can elect to have their DAP deducted from their contribution. Where this occurs, the amount of DAP will gradually increase as their contribution decreases. As the RAD contribution decreases, the resident may be required to make a further contribution if the deductions are to continue.

Pricing

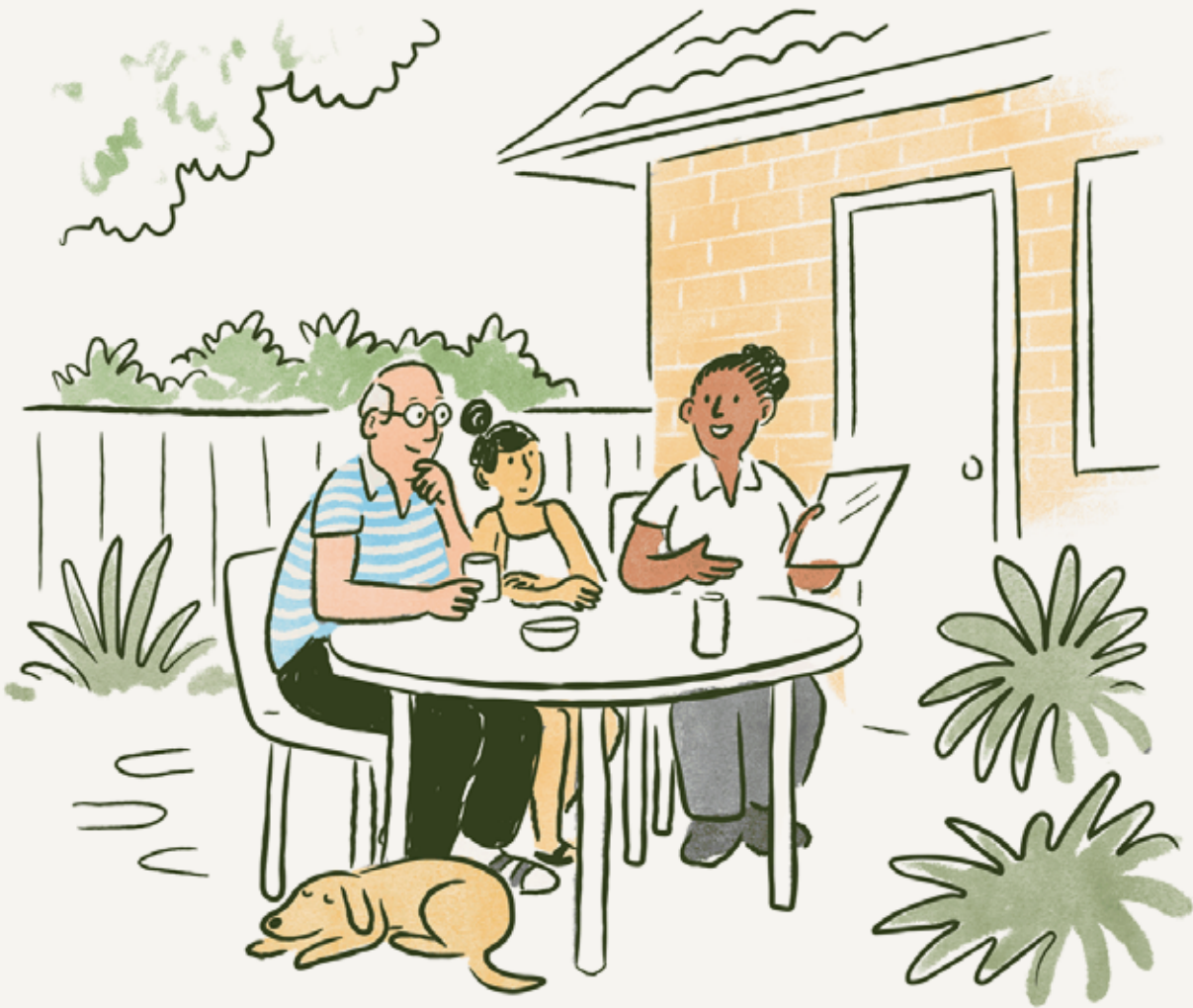
Room type	Aged care pricing commissioner approved*	Maximum refundable accommodation deposit (RAD)	Maximum daily accommodation payment (DAP)**	10% RAD	90% DAP
A	N/A	\$480,000	\$109.94	\$48,000	\$98.95

Additional Services Fee*** – \$30 per day or \$5.95 per day for fully supported residents

* applicable to accommodation valued over \$550,000

** DAP prices subject to change quarterly to align with government quarterly interest rate changes

*** For new residents entering the residential care home from July 2023, the Additional Service Fee will be indexed on an annual basis in July of each year based on the CPI increase for the previous year. This applies to all fully and partially supported residents.





Anglicare

For more information please contact us.

anglicare.org.au/agedcare

1300 111 278