

# The Lark

1 

1 

1 

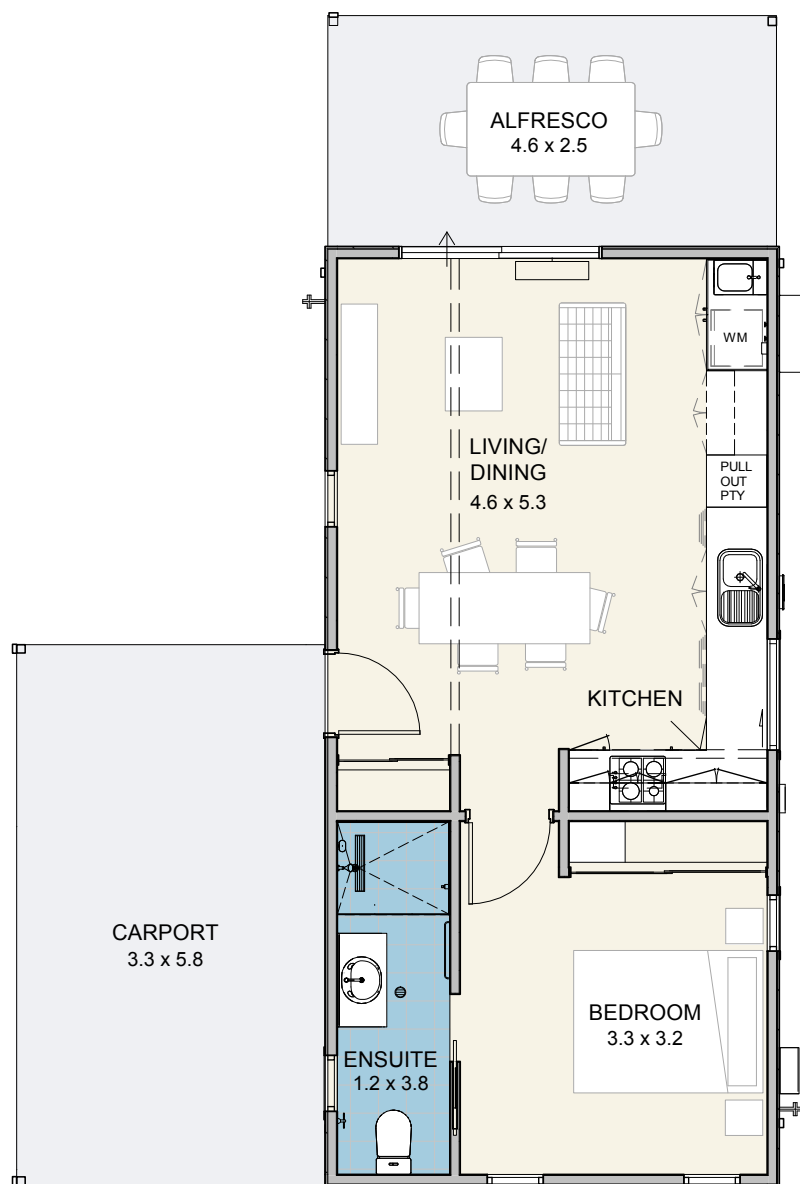


## A place to call home

A compact yet highly functional 1 bedroom 1 bathroom home that has the bedroom and living area situated at opposite ends. Access to the alfresco is directly from the kitchen/dining area to make entertaining a breeze. The clever design also incorporates a separate bathroom and laundry.

  
**EDENLIFE**<sup>®</sup>  
AUSTRALIND

# The Lark



## Specifications

House .....	46m <sup>2</sup>
Alfresco .....	12m <sup>2</sup>
Carport .....	18m <sup>2</sup>

## Features

- Reverse cycle split system air-conditioning unit to living area
- Natural gas hotplate & fan forced electric oven
- Continuous flow hot water unit
- Full internal & external painting
- Built in robes to bedrooms
- Carpet to bedrooms
- Vinyl planking to living areas
- Flyscreens to windows
- Blinds to windows
- LED lighting throughout
- Tiled splashback to kitchen
- Soft close drawers throughout
- Stone benchtops
- Foldaway clothesline
- Full insulation



Updated 6<sup>th</sup> March 2024

Disclaimer: Edenlife reserves the right to change the information in this publication at any time without notice.

For further information

T 08 9423 5131

E [live@edenlife.com.au](mailto:live@edenlife.com.au)

[www.edenlife.com.au](http://www.edenlife.com.au)



**EDENLIFE**<sup>®</sup>  
AUSTRALIND