

The Wren

3 

2 

2 



New brochures
coming,
contact sales
consultant for
more information

from
\$452,500

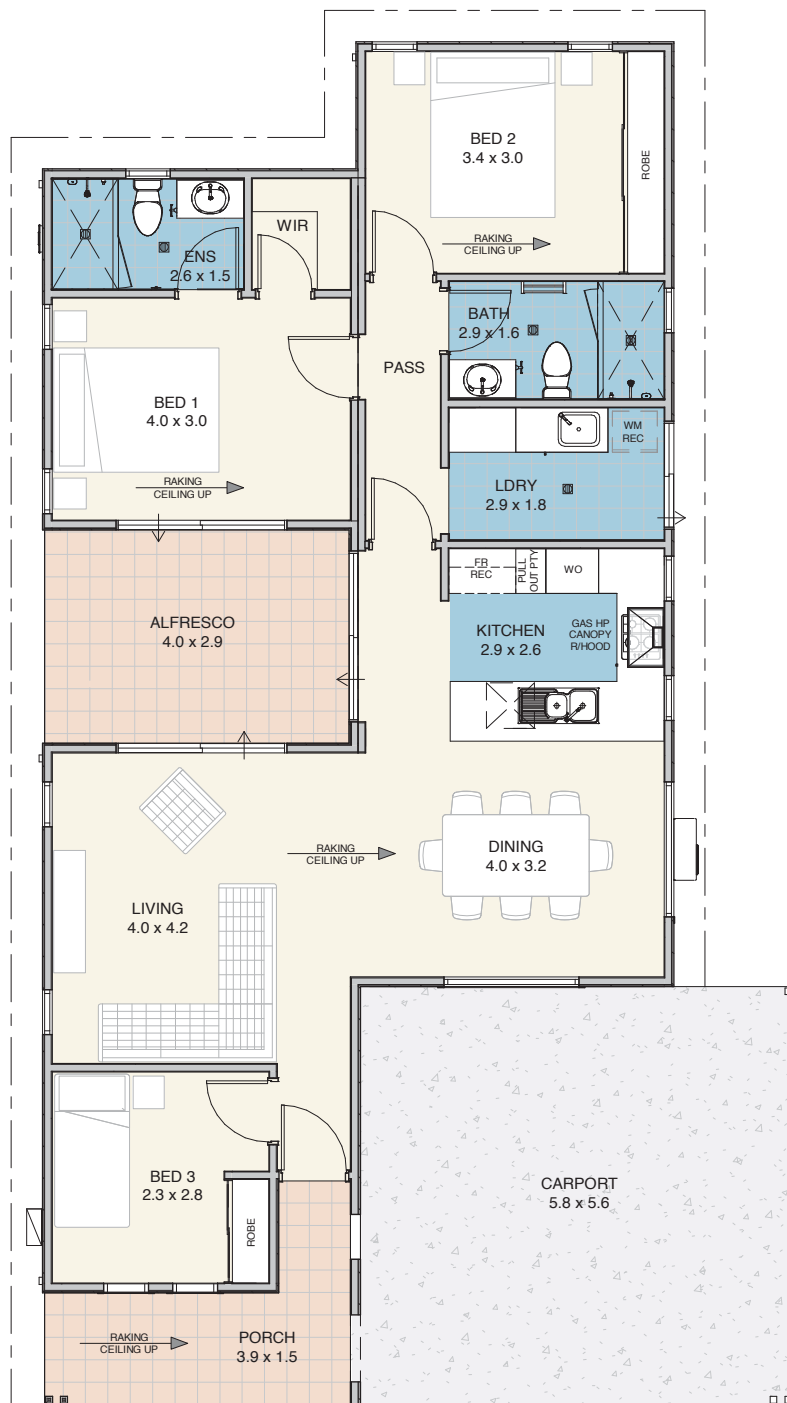
A place to call home

An entertainers delight with direct access to the alfresco from the living area and the kitchen. The master suite features a WIR, ensuite and direct access to the alfresco. Bedroom 2 has a wall-to-wall BIR and, at the front of the home, a third bedroom provides yet another option. The living, dining, kitchen and alfresco all flow together, creating a great zone to entertain or relax.



EDENLIFE®
AUSTRALIND

The Wren



Specifications

| | |
|----------------|-------------------|
| House | 104m ² |
| Alfresco | 12m ² |
| Carport | 32m ² |
| Porch | 8m ² |

Features

- Reverse cycle split system air-conditioning unit to living area
- Natural gas hotplate & fan forced electric oven
- Continuous flow hot water unit
- Full internal & external painting
- Built in robes to bedrooms
- Carpet to bedrooms
- Vinyl planking to living areas
- Flyscreens to windows
- Blinds to windows
- LED lighting throughout
- Tiled splashback to kitchen
- Soft close drawers throughout
- Stone benchtops
- Foldaway clothesline
- Full insulation



Updated 27th March 2023

Disclaimer: Edenlife reserves the right to change the information in this publication at any time without notice.

For further information

T 08 9423 5131

E live@edenlife.com.au

www.edenlife.com.au



EDENLIFE[®]
AUSTRALIND