



EDEN GARDENS LIFESTYLE ESTATE

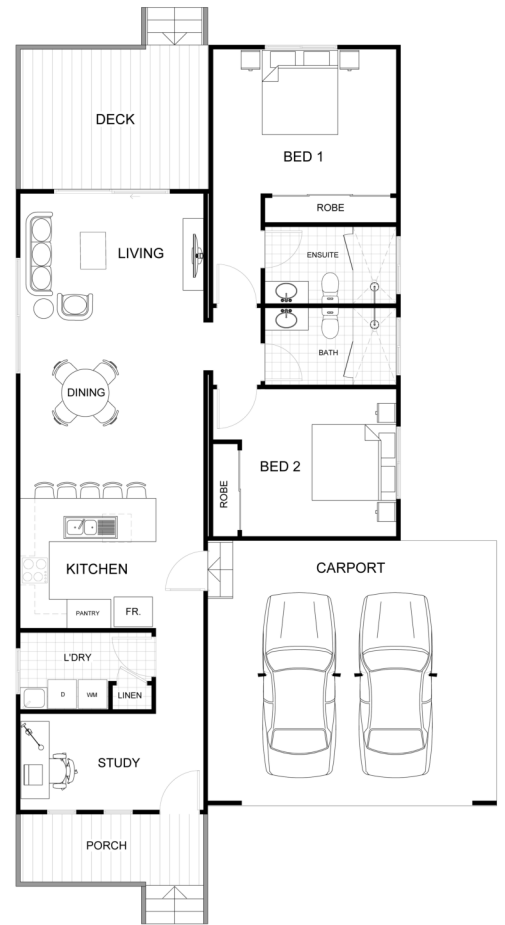
79 Princes Highway, Eden, NSW, 2551

by LINCOLN PLACE

The MUNRO



Experience the best of open-plan living with the Munro. The combined lounge and dining space effortlessly leads to a private alfresco area, creating the perfect environment for outdoor entertainment. This home includes two spacious bedrooms, each complete with built-in wardrobes, two bathrooms, including an ensuite to the master bedroom, a study, a separate laundry, and a double carport equipped with a motor lift door for added convenience. The Munro is the ideal home for those seeking a low-maintenance lifestyle without compromising on style or functionality. Live comfortably with the Munro.



*Left-hand driveway access. Render is an artists impression only and is subject to change.

For more information contact:

 (02) 6496 3583

 chriswilson@cwree.com.au

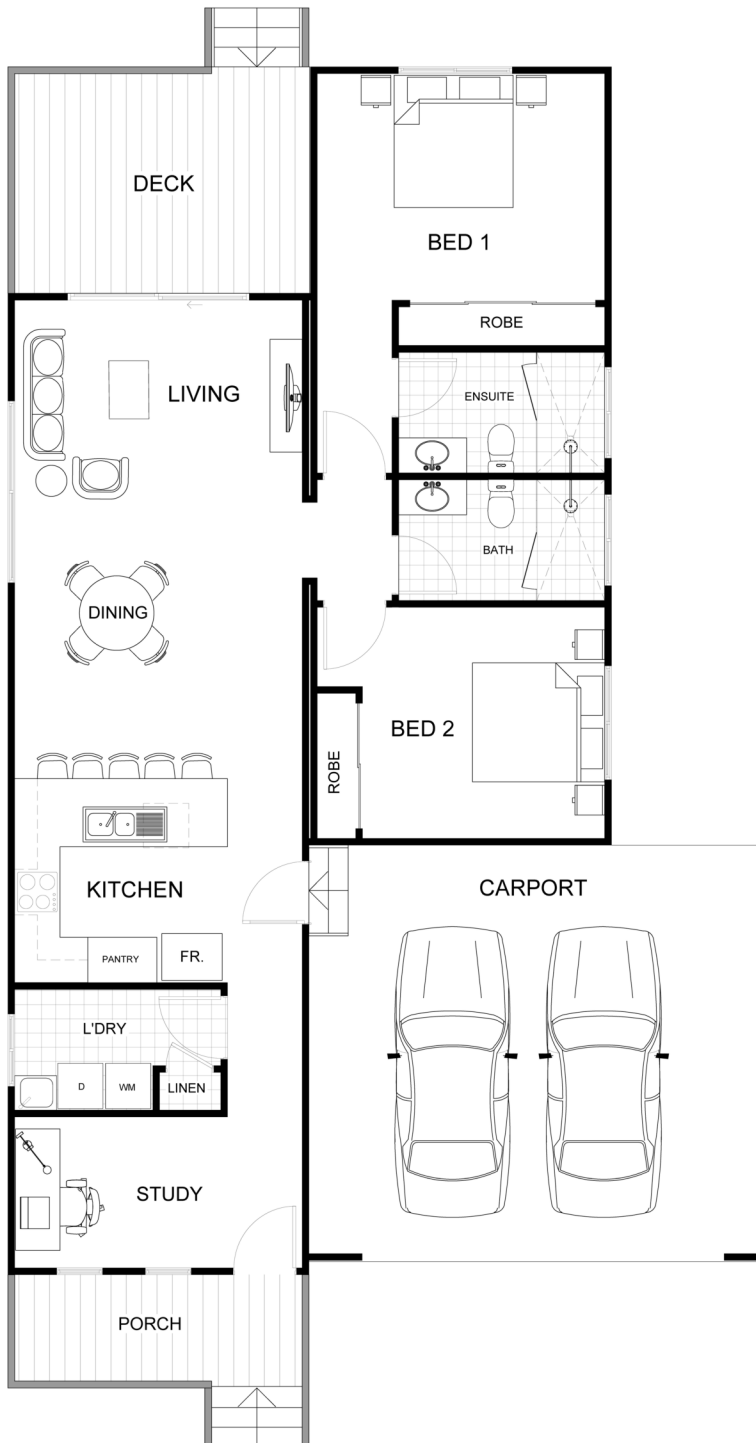
November 2024



EDEN GARDENS LIFESTYLE ESTATE

79 Princes Highway, Eden, NSW, 2551

by LINCOLN PLACE



AREA

Internal Living Area	92.1m ²
External Living Area	17.5m ²
TOTAL	109.6m²

DIMENSIONS (M)

Living	3.9 x 6.0
Kitchen	3.9 x 2.7
Study	3.9 x 2.0
Bed 1	3.9 x 3.0
Bed 2	3.2 x 3.2
Bath	2.8 x 1.6
Ensuite	2.8 x 1.6
Deck	2.9 x 3.0
Carport	6.0 x 5.4

DISCLAIMER: This plan is an artist's impression. Measurements are approximate and are to be used as a guide only.

For more information contact:



(02) 6496 3583



chriswilson@cwree.com.au

November 2024