



St James Retirement Village

Unit Floor Plans

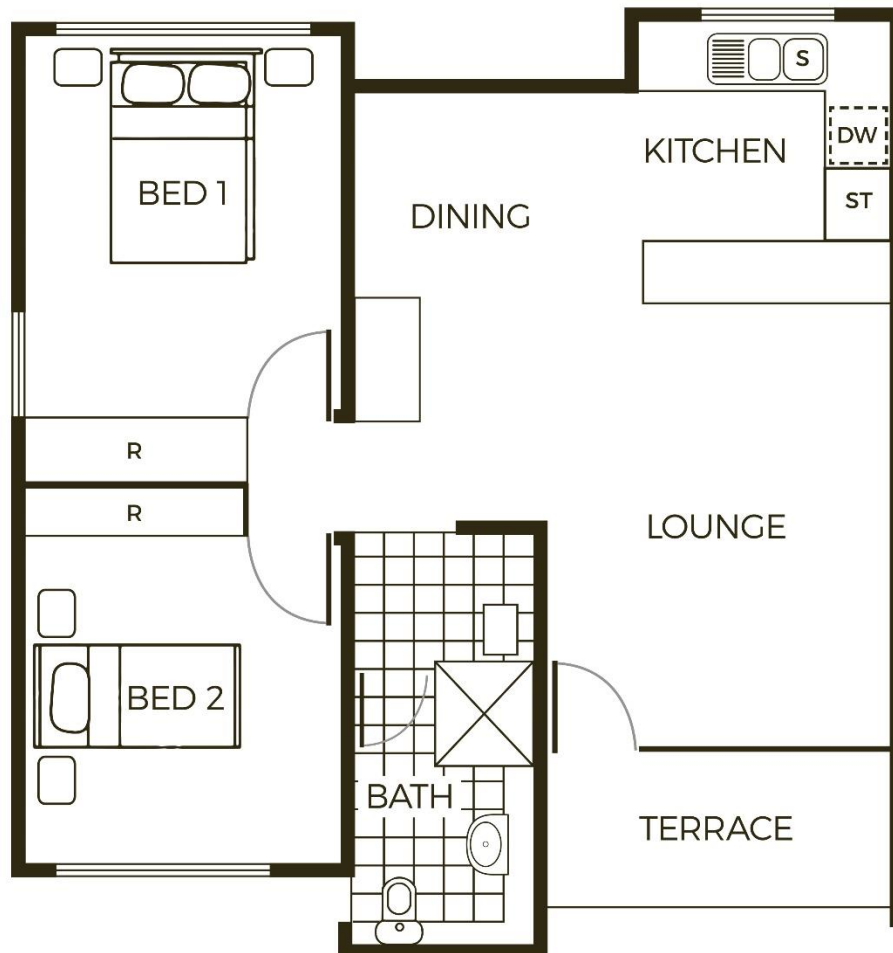
cofc.com.au

Plan not to scale/indicative only.

THE ARANKA

Two-bedroom garden unit

Total floor area 72.8m² = Unit 66.2m² + Terrace 6.6m²



Room Sizes

Lounge	3.9m x 3.3m
Bedroom 1	3.5m x 3.0m
Bedroom 2	3.3m x 3.0m
Dining	2.6m x 2.4m
Kitchen	2.6m x 2.4m
Bathroom	2.45m x 1.7m

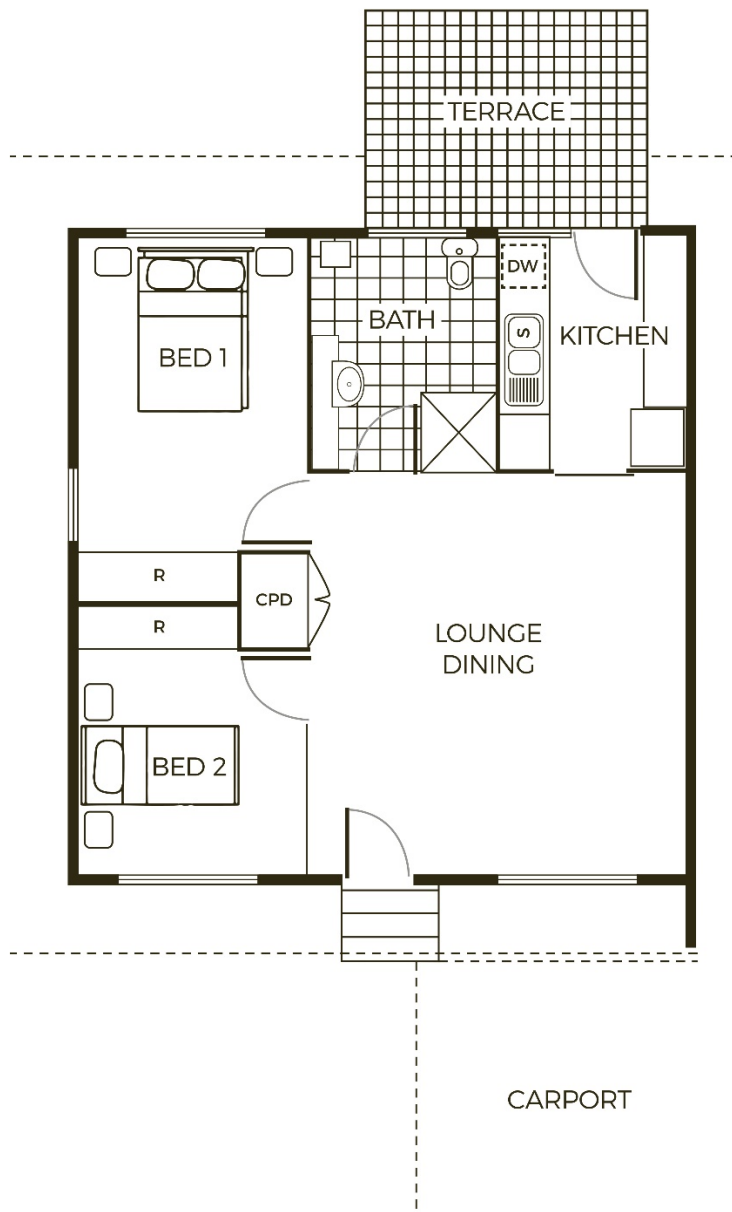
cofc.com.au

Plan not to scale/indicative only.

THE BARRINE

Two-bedroom One bathroom

Total floor area 75.4m² = Unit 66m² + Terrace 9.4m²



Room Sizes

Lounge/Dining	4.8m x 4.8m
Bedroom 1	3.8m x 3.0m
Bedroom 2	3.2m x 3.0m
Kitchen	2.85m x 2.4m
Bathroom	2.85m x 2.3m

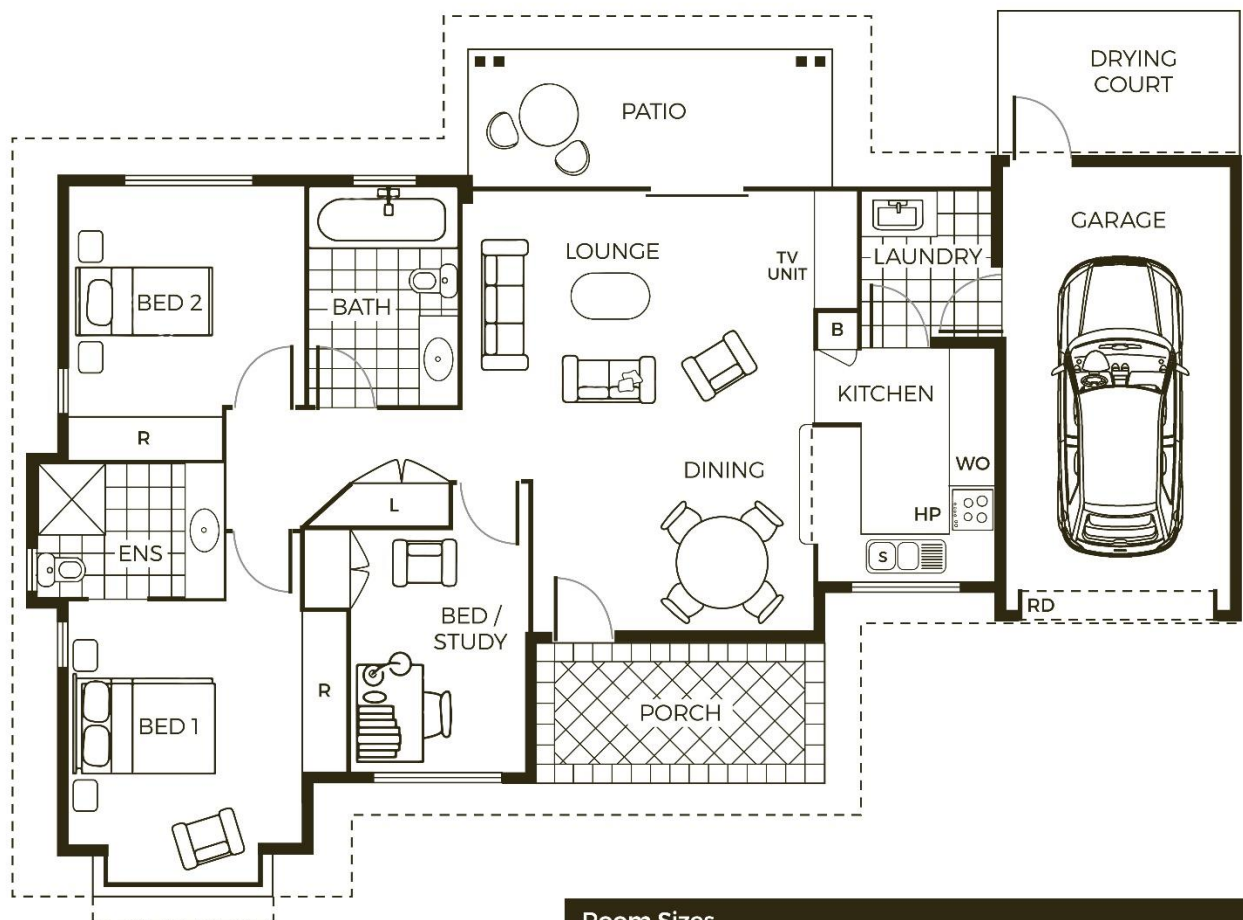
cofc.com.au

Plan not to scale/indicative only.

THE BROLGA

Two-bedroom + Study

Total floor area 121.7m² = Unit 100.1m² + Garage 21.6m²



Room Sizes

Living / Dining	5.95m x 4.85m	Bath	3.0m x 2.0m
Bedroom 1	3.3m x 3.2m	Ensuite	2.5m x 1.8m
Bedroom 2	3.2m x 3.1m	Laundry	2.0m x 1.8m
Bed / Study	3.3m x 2.4m	Garage	6.25m x 3.2m
Kitchen	3.2m x 2.5m		

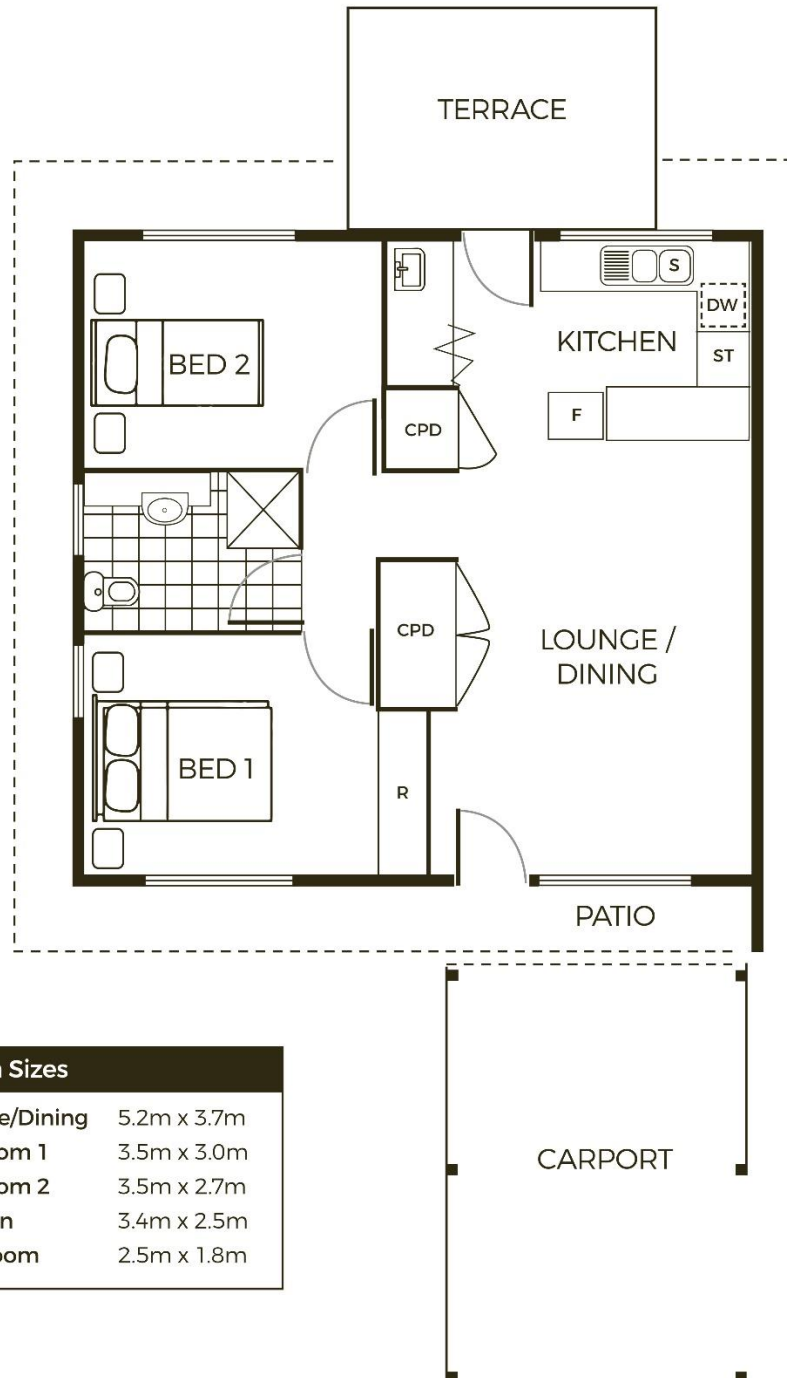
cofc.com.au

Plan not to scale/indicative only.

THE CORINTHIAN

Two-bedroom One bathroom

Total floor area 75.4m² = Unit 66m² + Terraces 9.4m²



Room Sizes

Lounge/Dining	5.2m x 3.7m
Bedroom 1	3.5m x 3.0m
Bedroom 2	3.5m x 2.7m
Kitchen	3.4m x 2.5m
Bathroom	2.5m x 1.8m

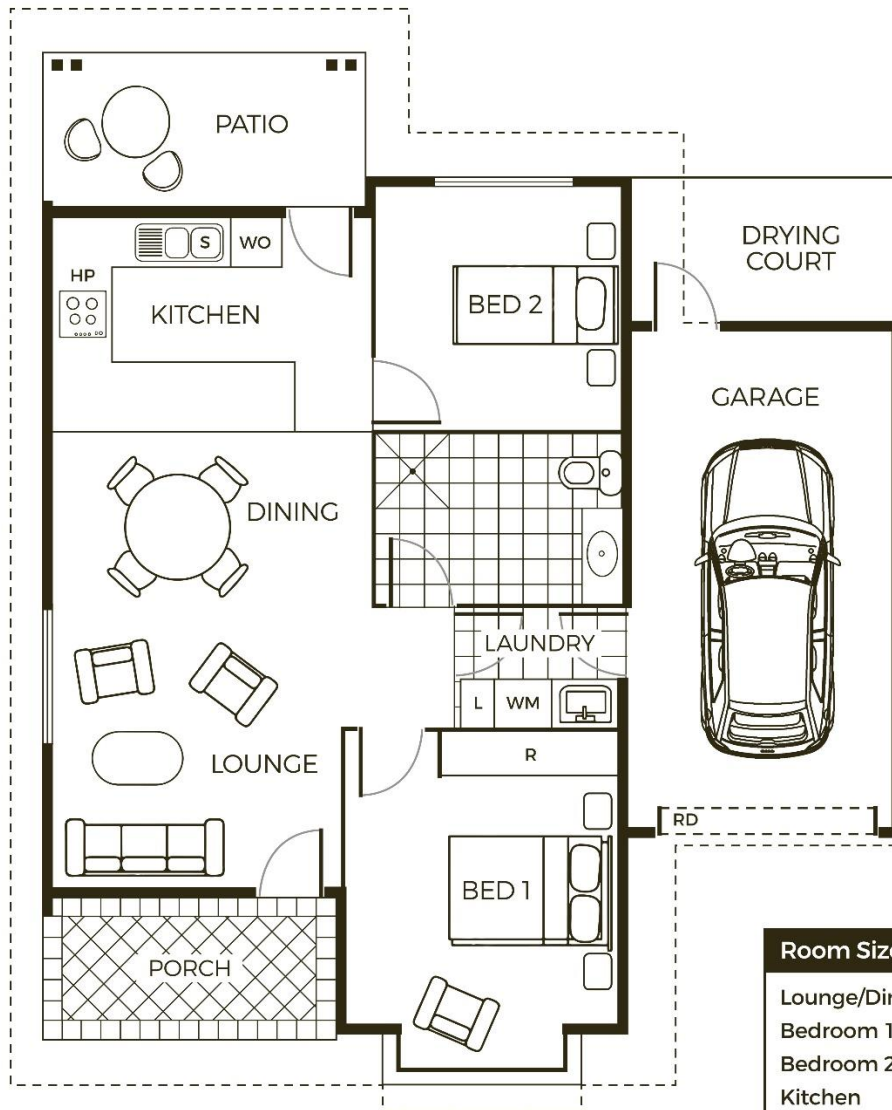
cofc.com.au

Plan not to scale/indicative only.

THE CURLEW

Two-bedroom One bathroom

Total floor area 95m² = Unit 73.1m² + Garage 21.9m²



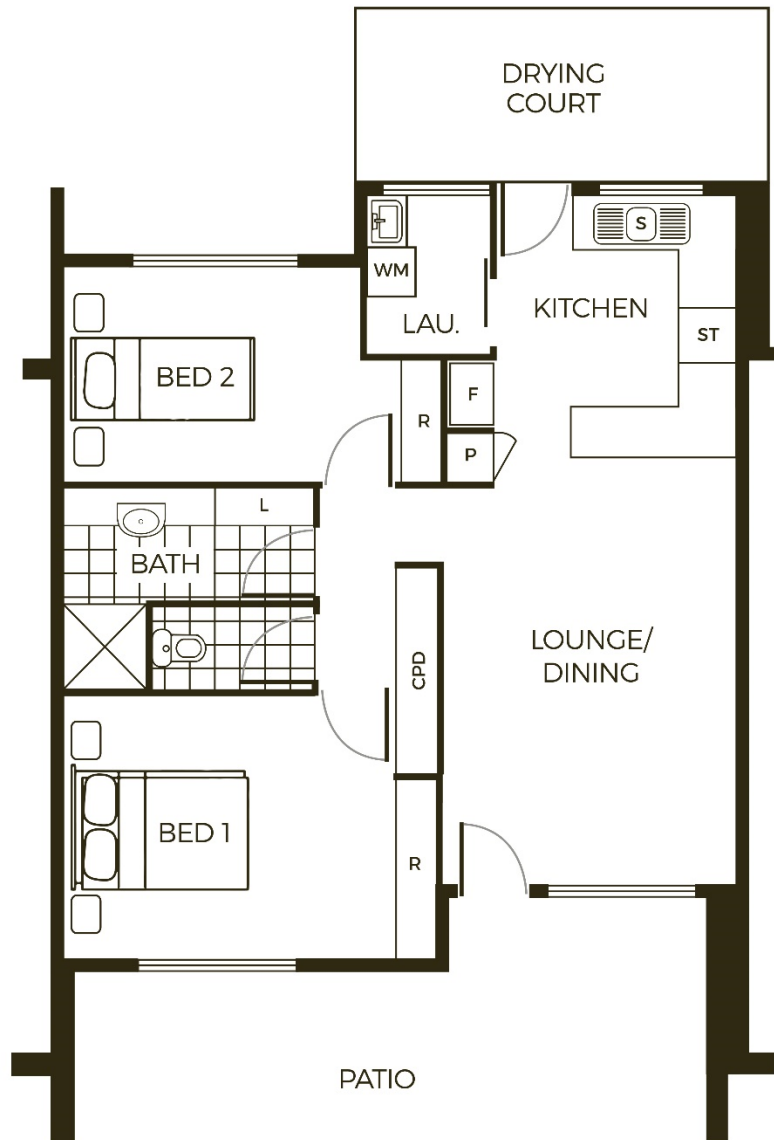
Room Sizes

Lounge/Dining	5.85m x 3.85m
Bedroom 1	3.3m x 3.0m
Bedroom 2	3.0m x 3.0m
Kitchen	3.85m x 2.65m
Bathroom	3.0m x 2.0m
Laundry	1.95m x 1.5m
Garage	6.25m x 3.35m

THE DELTA

Two-bedroom One bathroom

Total floor area 101.3m² = Unit 67.1m² + Drying court/Patio 34.2m²

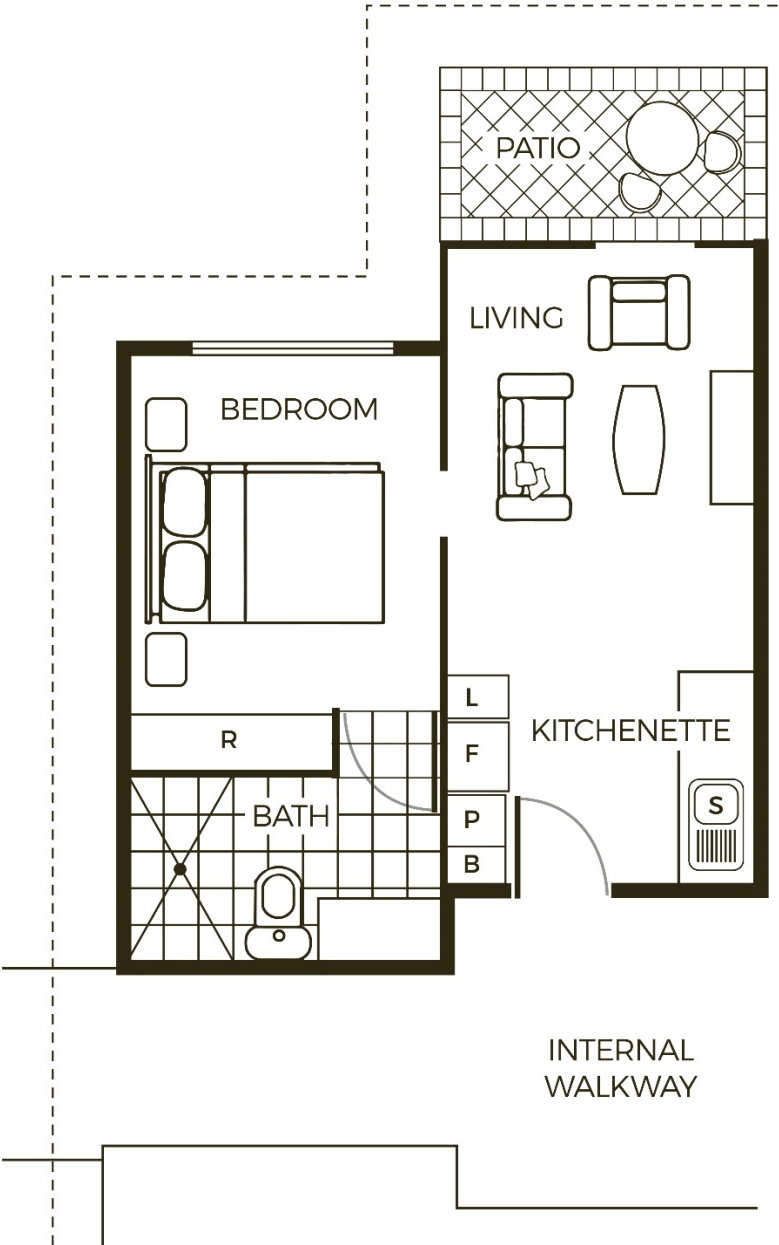


Room Sizes	
Lounge/Dining	4.29m x 3.3m
Bedroom 1	3.7m x 3.0m
Bedroom 2	3.3m x 2.4m
Kitchen	3.0m x 2.75m
Bathroom	2.7m x 2.3m
Laundry	1.8m x 1.4m

THE DOVE

Courtyard apartment

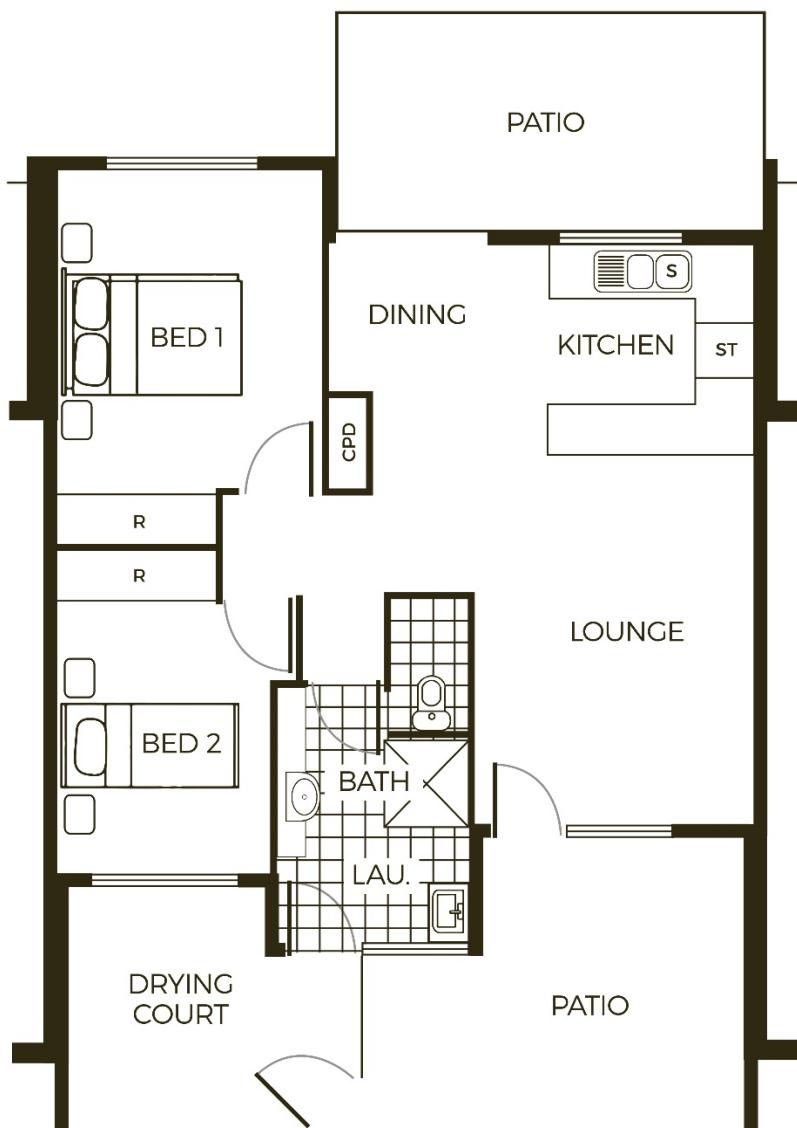
Total floor area 39.3m² = Unit 34.6m² + Patio 4.7m²



Room Sizes	
Living	3.8m x 2.75m
Bedroom	3.15m x 2.65m
Kitchen	2.17m x 1.85m
Bathroom	2.65m x 2.15m

THE EACHAM

Two-bedroom One bathroom

Total floor area 105.9m² = Unit 71.6m² + Patio/Drying area 34.3m²

Room Sizes

Lounge	4.2m x 3.3m
Bedroom 1	3.6m x 3.0m
Bedroom 2	3.0m x 2.7m
Dining	2.55m x 2.0m
Kitchen	2.4m x 2.4m
Bathroom/Laundry	2.8m x 2.1m

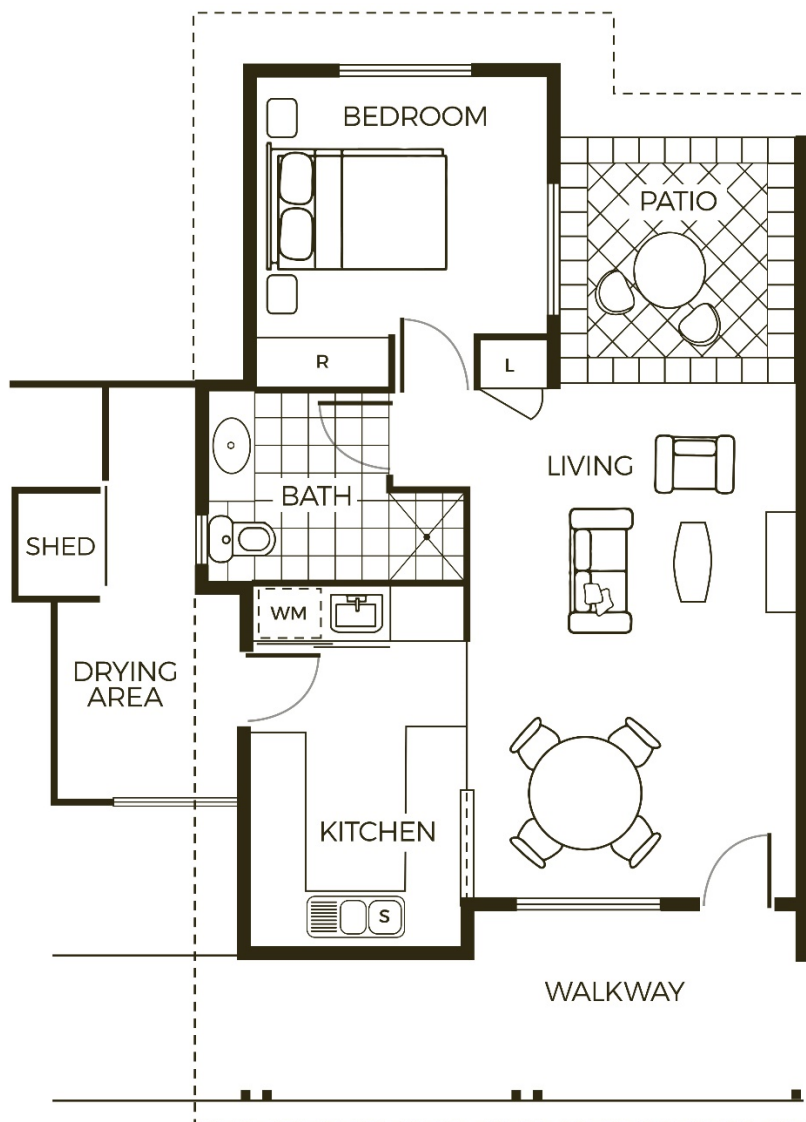
cofc.com.au

Plan not to scale/indicative only.

THE FINCH

Two-bedroom Garden Unit

Total floor area 75.1m² = Unit 58.7m² + Patio/Drying area 16.4m²



Room Sizes	
Living/Dining	5.95m x 3.75m
Bedroom	3.3m x 3.0m
Kitchen	3.5m x 2.5m
Bathroom	2.9m x 2.1m

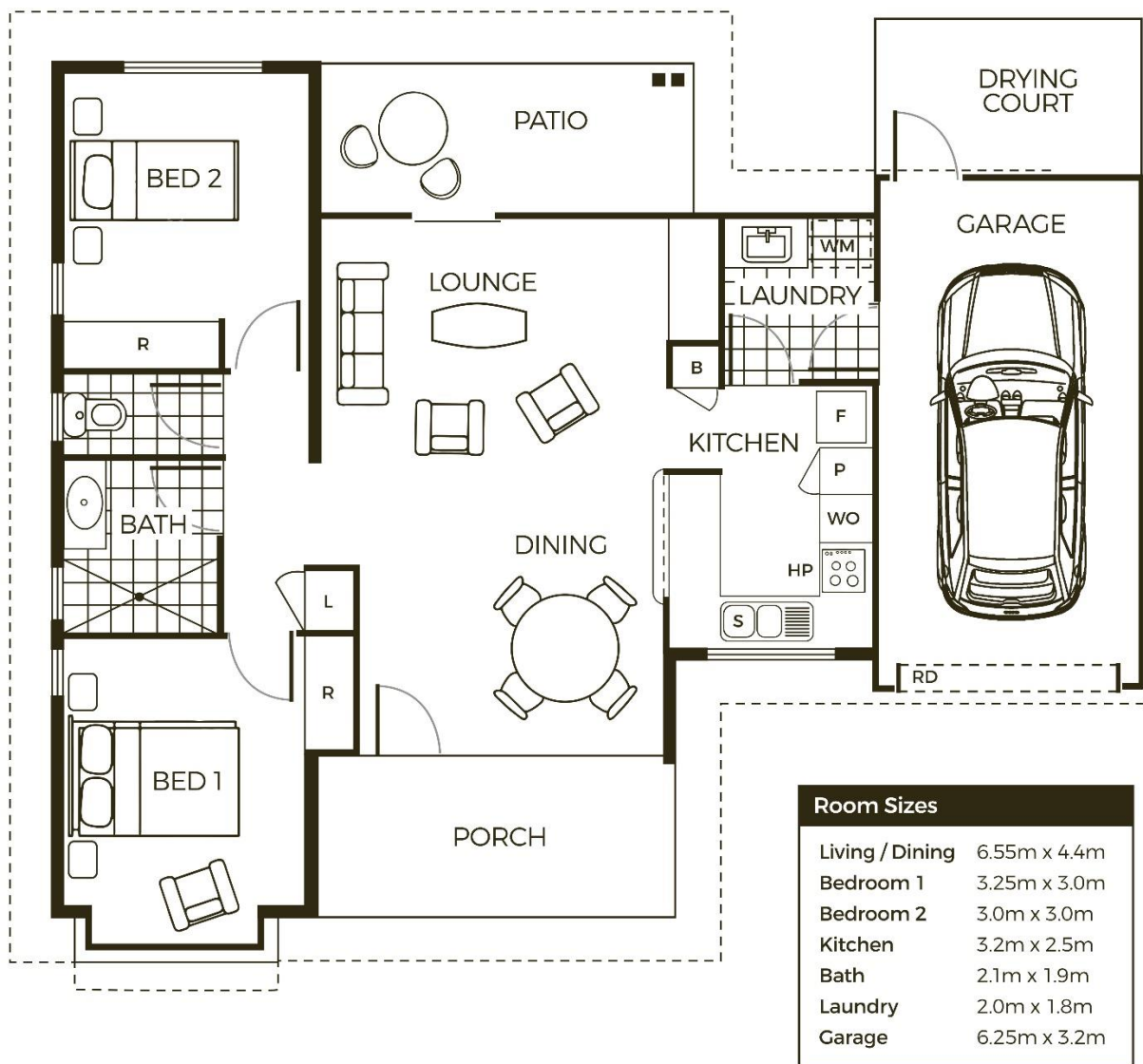
cofc.com.au

Plan not to scale/indicative only.

THE IBIS

Two-bedroom One bathroom

Total floor area 103.2m²= Unit 81.6m² + Garage 21.6m²



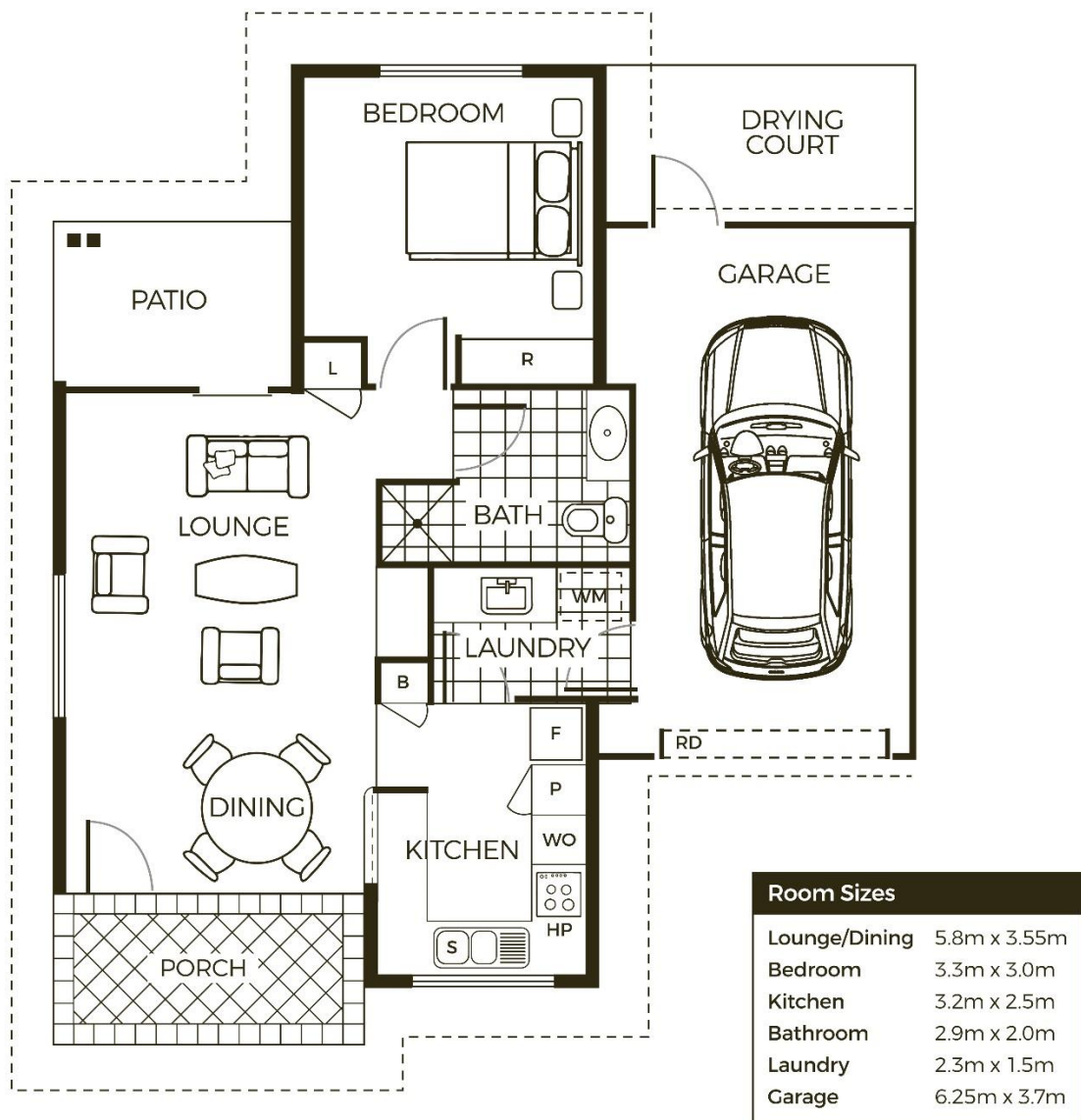
cofc.com.au

Plan not to scale/indicative only.

THE KINGFISHER

One-bedroom One bathroom

Total floor area 80.9m² = Unit 58.6m² + Garage 22.3m²



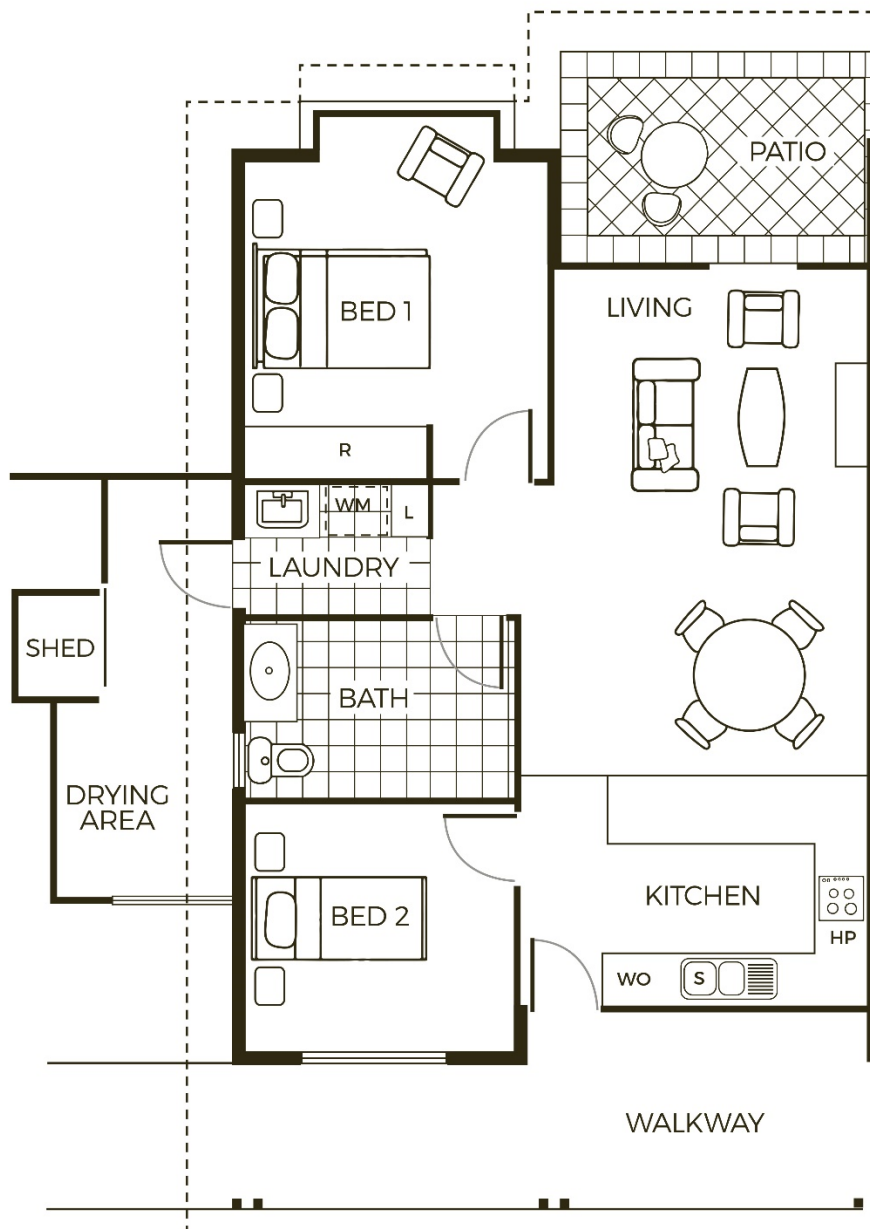
cofc.com.au

Plan not to scale/indicative only.

THE LORIKEET

Two-bedroom Garden Unit

Total floor area 90.9m² = Unit 58.6m² + Drying area/Patio 18.3m²



Room Sizes

Lounge/Dining	5.85m x 3.9m
Bedroom 1	3.3m x 3.0m
Bedroom 2	3.0m x 2.8m
Kitchen	3.9m x 2.65m
Bathroom	3.0m x 2.0m
Laundry	1.95m x 1.5m

ST JAMES



RETIREMENT VILLAGE

Churches of Christ
St James Retirement Village
260 Fulham Road, Heatley Qld 4814
P: 07 4760 8000
M: 0419 775 717
E: StJamesRV@cofcqld.com.au



Churches of Christ
Retirement Living
Po Box 687, Kenmore Qld 4069
P: 1800 199 740
E: retirementlivingQld@cofcqld.com.au
W: cofc.com.au/retirement-village