

Zenith 2G



Total Area - 196m²



Ideal for the adventurous of spirit, Zenith offers everything you need for an effortlessly low-maintenance lifestyle in a beautifully laid out, 2-bedroom open-plan home with a multipurpose room so you can kick back and enjoy your downtime.

The master bedroom with walk-in robes, ensuite and views overlooking the patio will become your own private sanctuary, as well as the future-proof features like no-step entry and hobless shower recess.

Key features:

- Seamless storage for all your essentials.
- Master bedroom that flows to the patio and features walk-in robe and ensuite.
- Secure double garage.
- Future-proof features - step-free entry, hobless shower recess.

Zenith 2G

Living and Outdoor

Living – 4.2m x 3.9m

Dining – 4.8m x 3.2m

Multi-purpose Room – 3.0m x 3.2m

Outdoor Patio – 4.0m x 3.6m

Garage – 5.8m x 5.8m

Bedrooms

Bedroom 1 – 3.4m x 3.4m

Bedroom 2 – 3.0m x 3.2m

Total Areas

Courtyard – 6m²

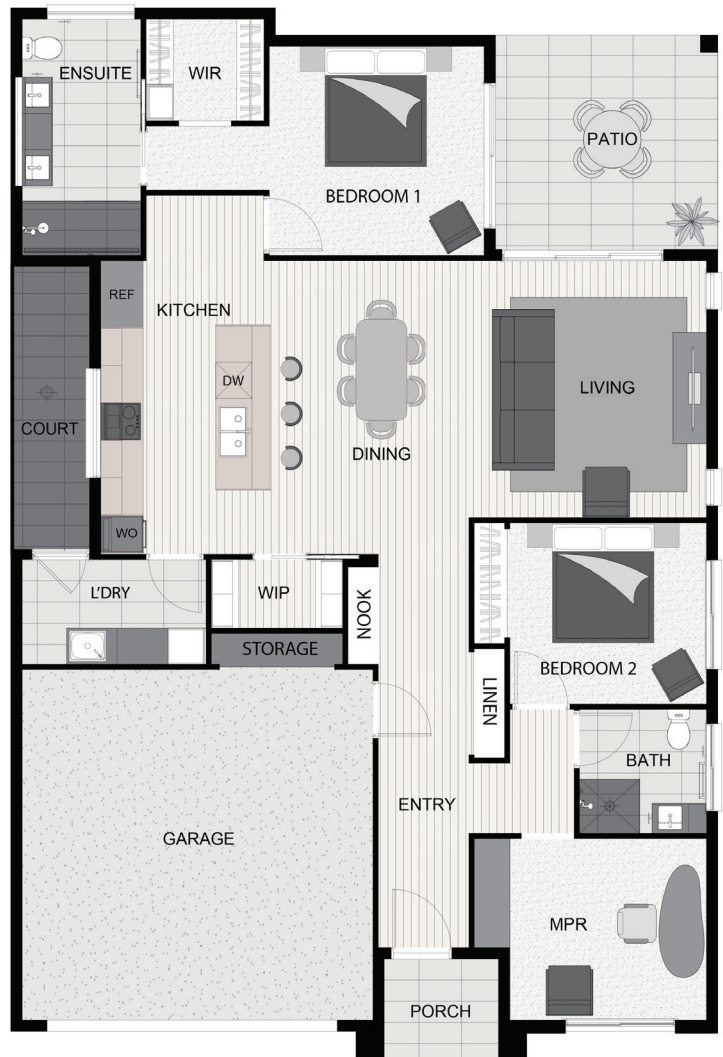
House – 136m²

Outdoor Patio – 14m²

Garage – 37m²

Porch – 3m²

Grand Total – 196m²



This document is supplied solely for the purpose of providing an indicative floor plan and facade of the nominated home type that may be constructed within the proposed Halcyon Vista community and is not intended to be used for any other purpose. Floorplans and facades are for illustrative purposes only. Whilst all care has been taken in the preparation of the particulars contained herein, no warranty can be given and interested parties must therefore rely on their own enquiries. Please note floorplans change due to roofline adjustments, measurements are an approximation. Plan not to scale. Correct as at April 2024. Zenith Floorplan HE1.