



MUDGEES SPRING LIFESTYLE ESTATE

by LINCOLN PLACE


The MURPHY

The Murphy home design maximises every inch of living space. Boasting an open-plan layout, this home combines a generous lounge area leading to an inviting outdoor entertaining deck, a modern kitchen featuring an island bench and a light filled dining area. There are two bedrooms, each with built-in robes, and one with an ensuite. The Murphy also features a family bathroom, a private study, a well-equipped laundry, clever storage solutions, and a convenient carport accommodating two vehicles. Embrace a new level of low maintenance living with The Murphy.



Render is an artists impression only and is subject to change.

For more information, contact Peter:

 0488 738 379

 petervanags@lincolnplace.com.au

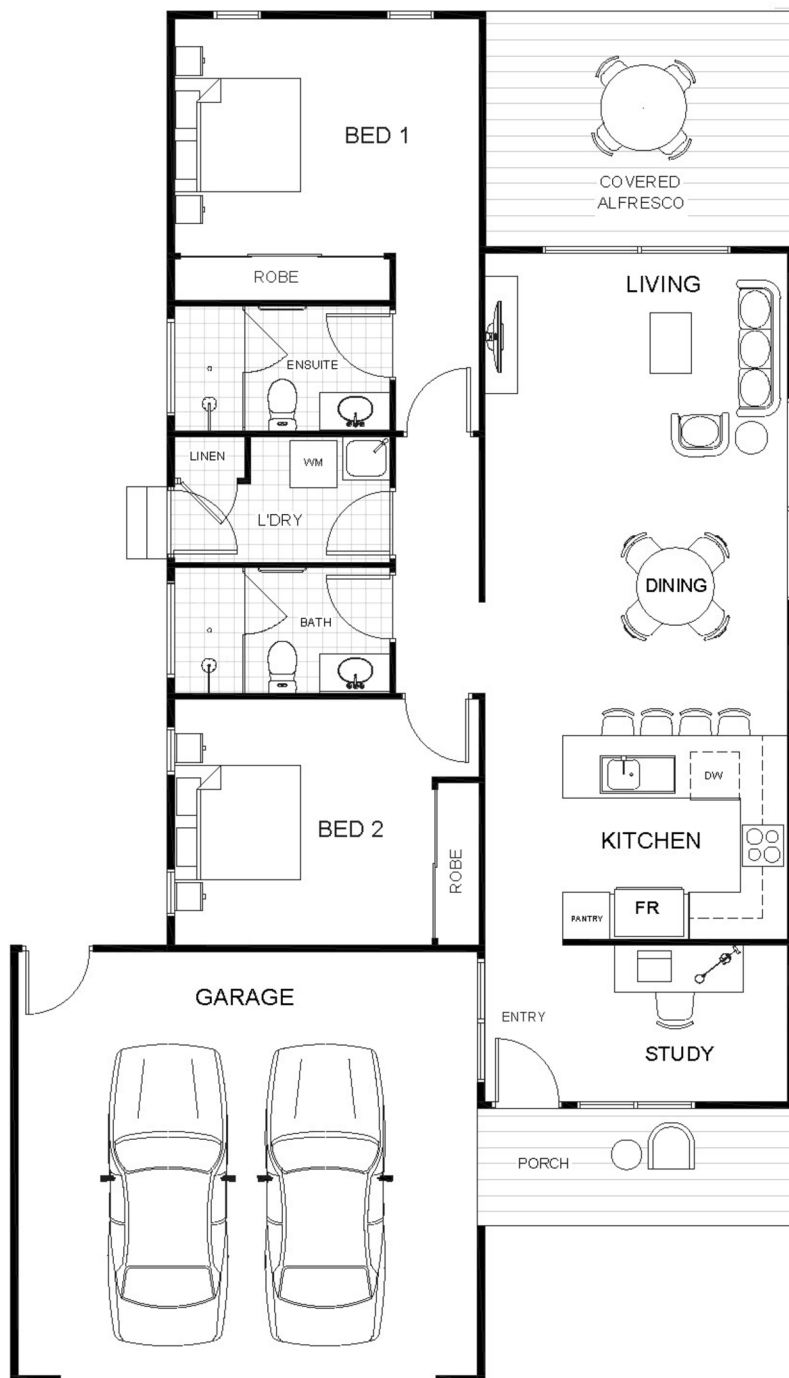
April 2024



MUDGEES SPRING LIFESTYLE ESTATE

by LINCOLN PLACE

2 2 1 2



AREA

Internal Living Area	88.1m ²
External Living Area	17.9m ²
<u>TOTAL</u>	106m ²

DIMENSIONS (M)

Living	3.1 x 3.8
Dining	3.1 x 3.8
Kitchen	2.6 x 2.9
Bed 1	3.0 x 3.9
Bed 2	3.1 x 3.3
Study	2.0 x 2.8
Bath	1.6 x 1.6
Ensuite	1.6 x 2.8
Laundry	1.6 x 2.8
Covered Alfresco	3.0 x 3.9
Porch	1.5 x 3.9
Garage	5.9 x 5.4

DISCLAIMER: This plan is an artist's impression. Measurements are approximate and are to be used as a guide only.

For more information, contact Peter:

0488 738 379

petervanags@lincolnplace.com.au

April 2024