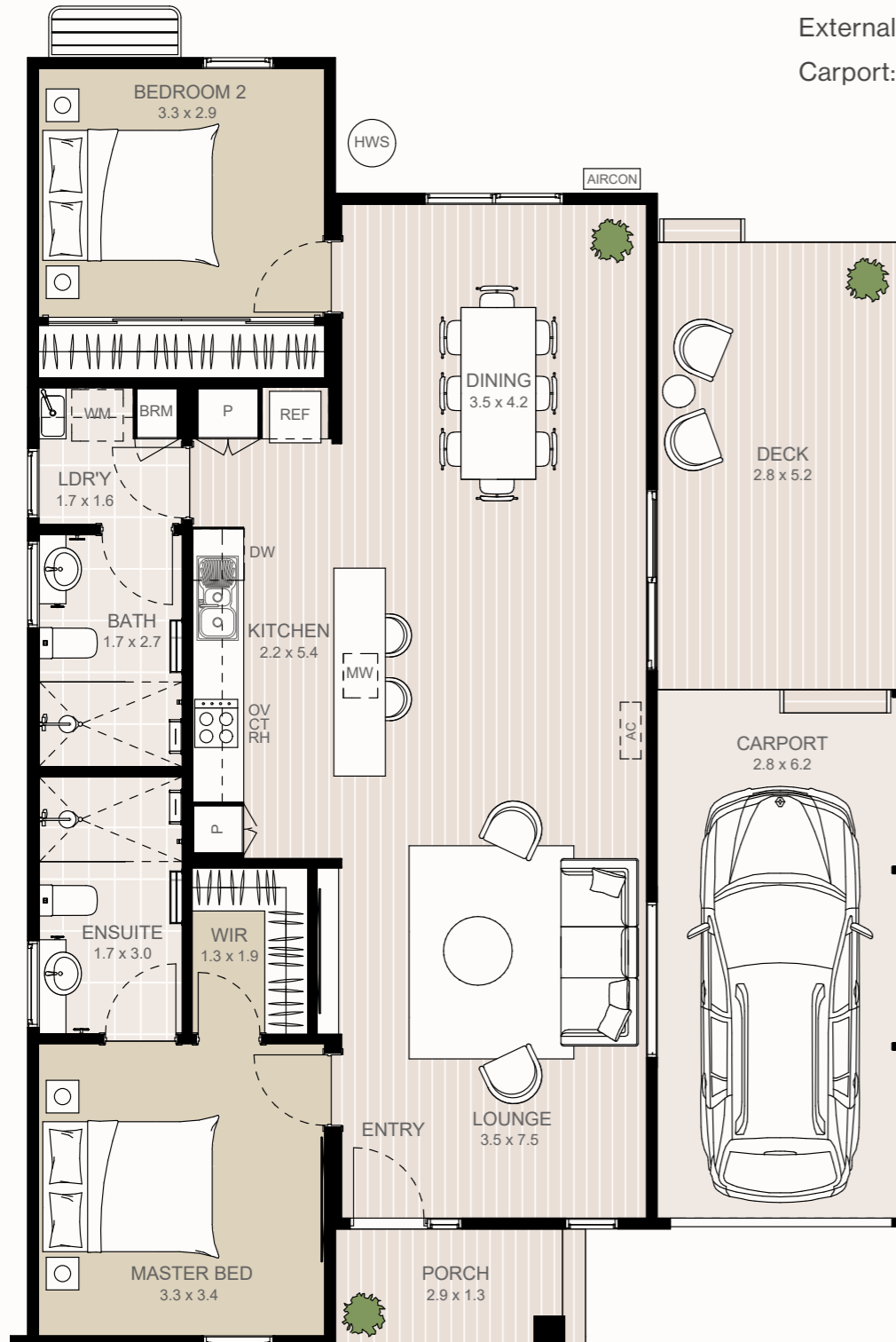


Hume home design

🛏 2 🍽 2 🚗 1

Total area:	134.4m²
Internal:	97.8m ²
External:	18.8m ²
Carport:	17.8m ²



KEY FEATURES:

- Spacious open plan living and dining
- Master with ensuite and walk-in robe
- Large outdoor entertainment area
- Separate laundry
- Designated secure carport with tandem driveway parking