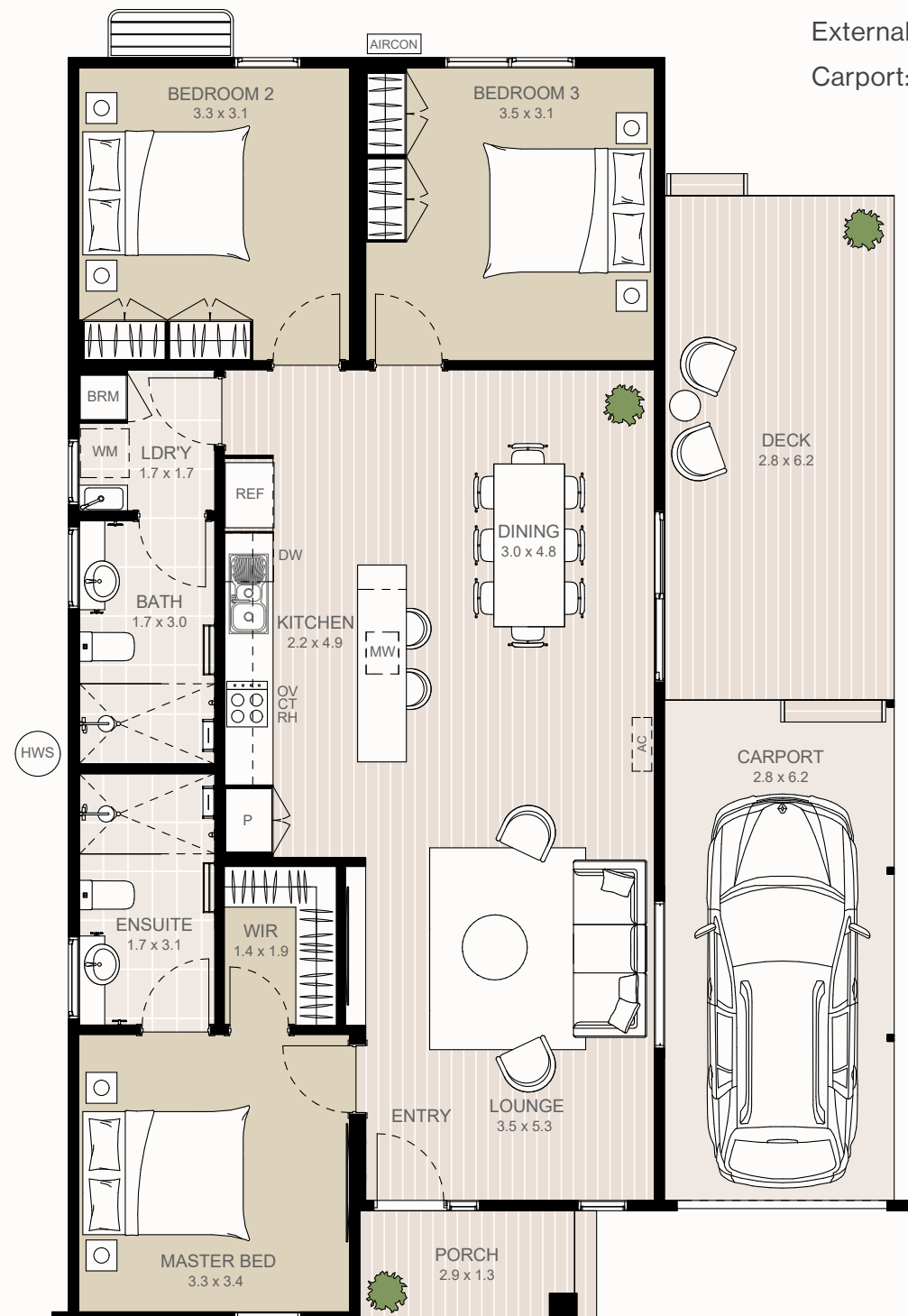


## Oxley home design

3 2 1

<b>Total area:</b>	<b>147.2m<sup>2</sup></b>
Internal:	107.7m <sup>2</sup>
External:	21.7m <sup>2</sup>
Carport:	17.8m <sup>2</sup>



### KEY FEATURES:

- Spacious open plan living and dining
- Three generously sized bedrooms
- Master with ensuite and walk-in robe
- Large outdoor entertainment area
- Separate laundry
- Designated secure carport with tandem driveway parking

