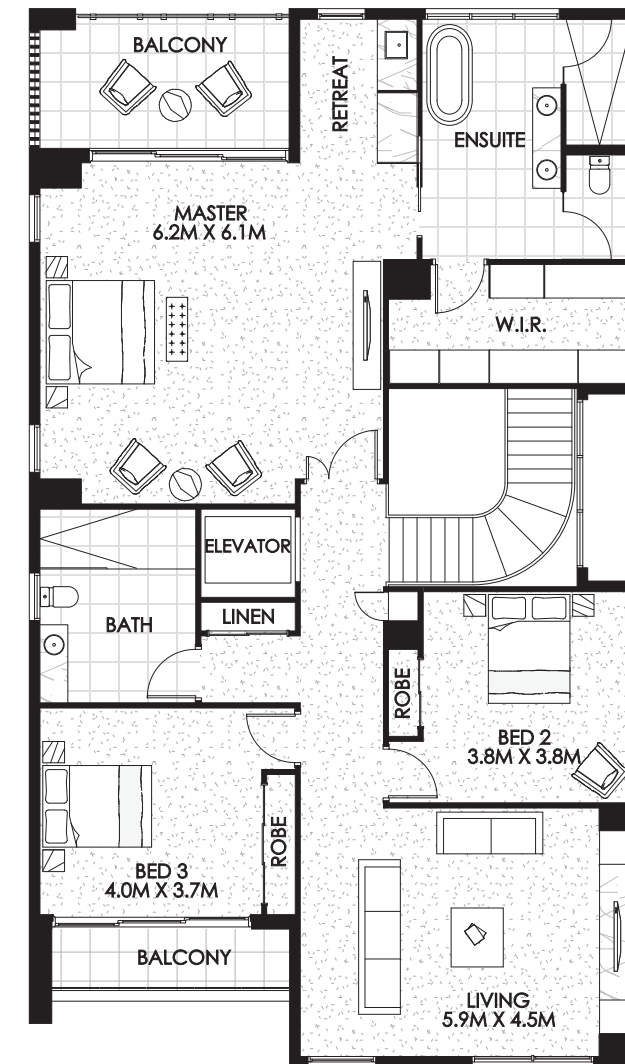


Ground Floor



First Floor

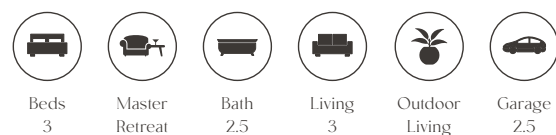


Zafiro

Ground Floor 212.59m²

First Floor 187.14m²

Total 399.73m² / 43.03 squares



The living comes easy in our Zafiro home design, offering three impressive bedrooms upstairs, an additional large separate media room and a large multipurpose room for your guests. The master bedroom boasts its own private sun-drenched terrace, where you can relax and enjoy your morning coffee.

The Zafiro is also an entertainer's delight and features a spacious open plan living, dining and kitchen area, with a large walk-in pantry to make dinner party prep a breeze. Zafiro was designed for living and also for sharing and will surely impress and inspire your guests.