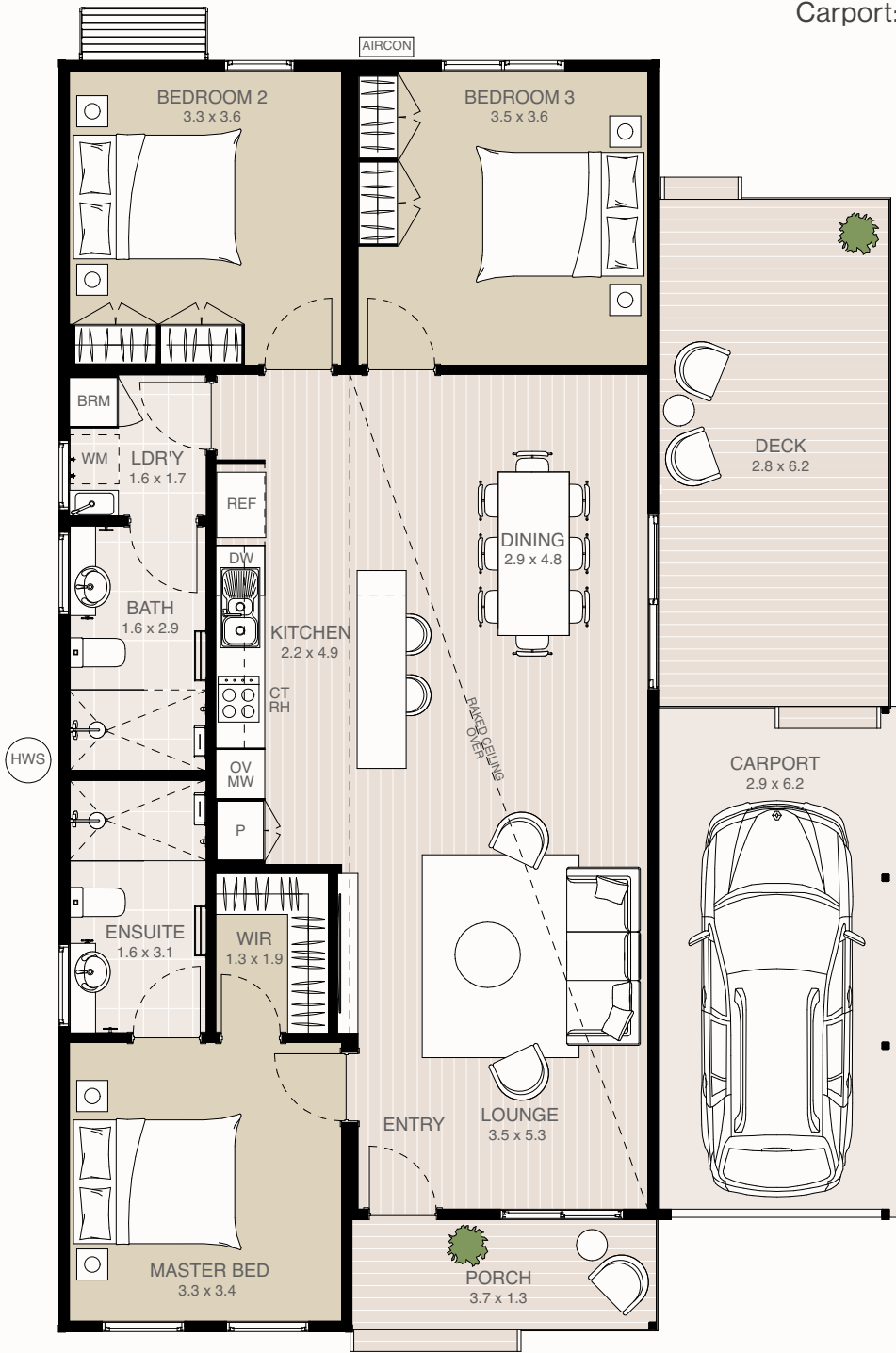


Murray home design

 3  2  1

Total area:	148.3m ²
Internal:	107.7m ²
External:	22.8m ²
Carport:	17.8m ²



KEY FEATURES

- Spacious open plan living and dining
- Three generously sized bedrooms
- Master with ensuite and walk-in robe
- Large outdoor entertainment area
- Separate laundry
- Carport with tandem driveway parking

