

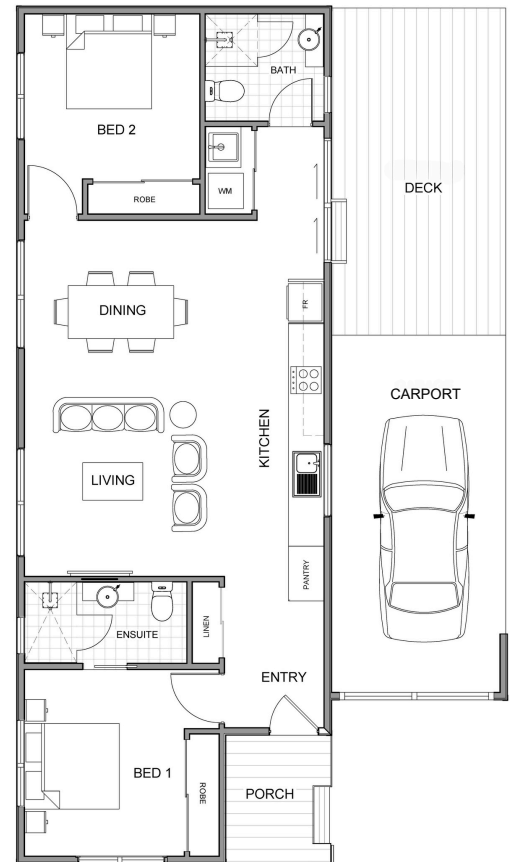


PORTLAND LIFESTYLE ESTATE by LINCOLN PLACE

The LUNA


2  2  1 

The Luna has all the features of modern day living. A welcoming front porch leads to a spacious open plan layout including a kitchen, dining area and family lounge room. There are two generous sized bedrooms, both with built in wardrobes, and two bathrooms. A carport with space for one car and large deck complete this very stylish home.



120 Derril Road, Portland, VIC, 3305

For more information please contact:

 0418 809 510

 kevin@assetsrealestate.com.au

August 2024



PORTLAND LIFESTYLE ESTATE

by LINCOLN PLACE



2 2 1

DIMENSIONS (M)

Living	3.2 x 6.1
Dining	2.0 x 2.8
Kitchen	1.8 x 4.6
Bed 1	3.5 x 3.2
Bed 2	3.2 x 3.5
Internal Area	72.9m²

For more information please contact:

0418 809 510

kevin@assetsrealestate.com.au

August 2024