

Retire with ease



Roselands
Masonic Village

RFBI Roselands Masonic Retirement Village is situated 16km southwest of Sydney's bustling CBD in the Canterbury-Bankstown area.

The village features 24 comfortable retirement living units and is just a short 10-minute walk to the local Roselands Shopping Centre.

Benefits of living at RFBI Roselands Masonic Retirement Village

- 24-hour emergency response system (optional)
- Open plan living and dining rooms with air-conditioning
- Community hall, lounge and library
- Monthly morning tea
- Close to local amenities
- Beautiful, well maintained gardens
- Public bus stop located outside the village
- RFBI Residential Care Village located 4 minutes drive



Flexible pricing
options



Spacious 1 & 2
bedroom units

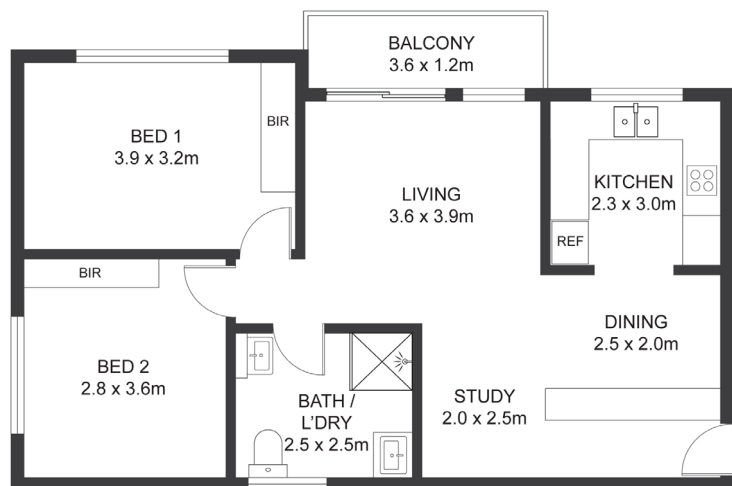


Community hall,
lounge and library

RFBI Goulburn Masonic Retirement Village Map



Sample unit floor plan



**Roselands
Masonic Village**
Retirement Living

To find out more or to book a tour
please contact us on 0417 283 871
roselands@rfbi.com.au or visit
rfbi.com.au

161-163 Moorefields Road, Roselands
NSW 2196