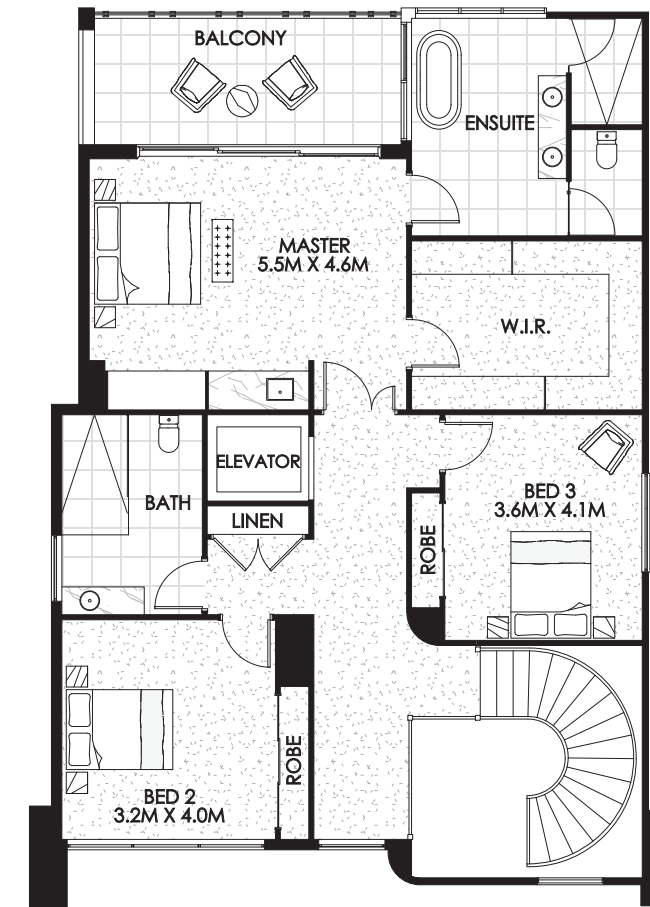


Ground Floor



First Floor



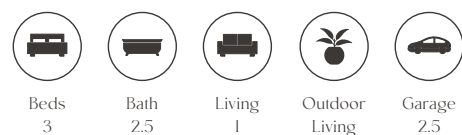
# Avondale

## Type 2

Ground Floor 193.04m<sup>2</sup>

First Floor 170.9m<sup>2</sup>

Total 363.94m<sup>2</sup> / 39.17 squares



Avondale's expansive 363.94m<sup>2</sup> floorplan comprises an opulent master suite, two additional bedrooms and separate living and dining zones. A private covered balcony off the master suite and an alfresco dining area on the terrace adjacent to the main living area seamlessly provide indoor/outdoor living options on both levels. And with three bathrooms, there's scope to enjoy as much privacy as you like. A two-car garage with dedicated golf car parking, separate laundry, an impressive butler's pantry, a sleek internal elevator and architectural curved staircase each add their own elements of sparkle to this truly memorable residence.