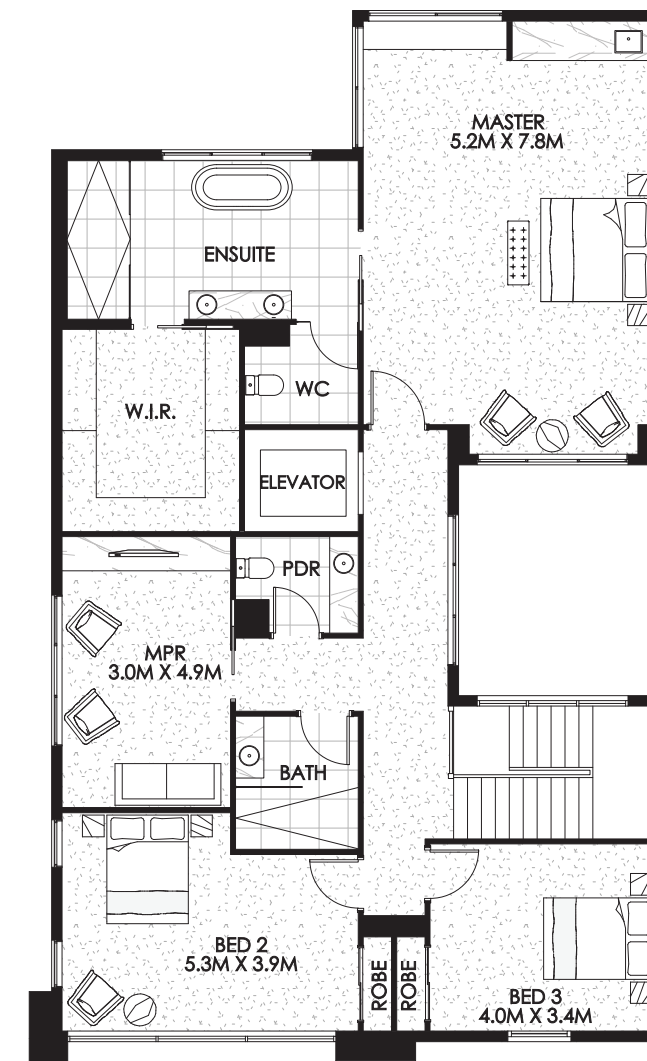


Ground Floor



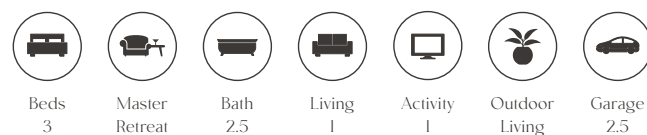
First Floor



Artist's impression only. Subject to change without notice.



Ground Floor 197.91m<sup>2</sup>  
 First Floor 163.14m<sup>2</sup>  
 Total 361.05m<sup>2</sup> / 38.86 squares



Our Ivey home design is the perfect abode for homeowners looking to minimise maintenance while maximising their lifestyle. Ivey's charm starts with its street appeal. Curved lines, a mixture of contrasting yet coordinating textures, that impressive feature porthole window and a separate garage door for your golf car - this is luxury Palm Springs-style living at its finest. The Ivey offers plenty of living space, allowing homeowners to really spread their wings. If you're planning to host visiting friends and family members, Ivey is for you. With its three bedrooms, a huge butler's pantry, two-car garage, and that chic internal elevator, we know the Ivey will really grow on you.