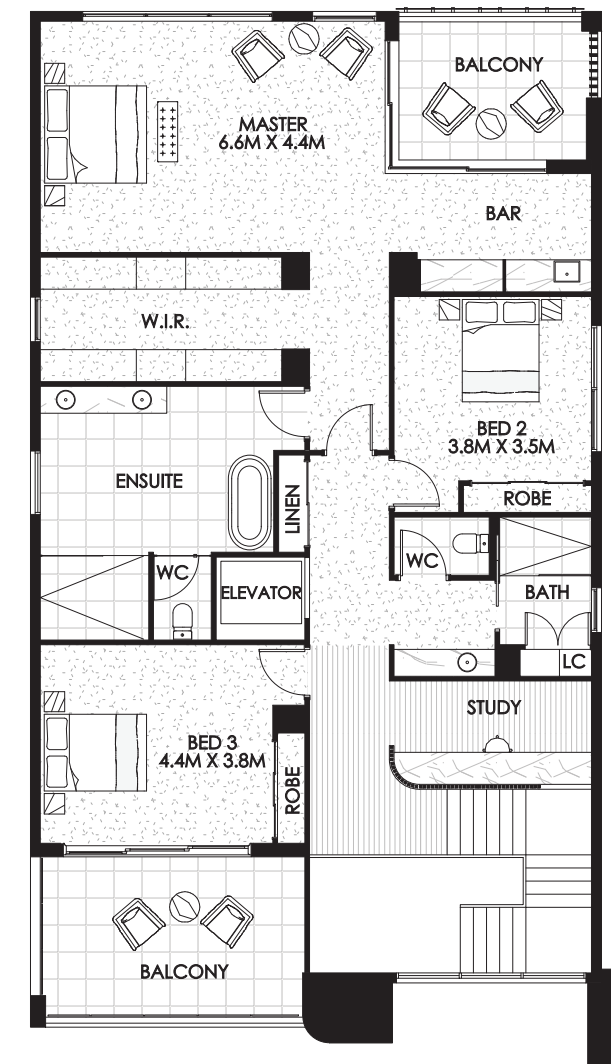


Ground Floor



First Floor



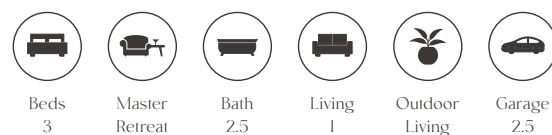
Artist's impression only. Subject to change without notice.

Montebello

Ground Floor 221.16m²

First Floor 192.55m²

Total 413.71m² / 44.53 squares



You hear the term "entertainer's delight" bandied around in real estate circles quite regularly, but our Montebello is precisely that. While this home design is open-plan by nature with a vast light-filled living area, it features a spacious separate dining room for formal gatherings, providing direct access to a terrace, for those more formal gatherings. When the weather's right (which is quite frequently here on the Sunshine Coast), you and your guests will be drawn to the great outdoors with thanks to Montebello's outdoor kitchen. With its own balcony (one of two balconies upstairs), the master suite's additional dedicated bar area will provide the perfect destination – and excuse – for lazy afternoon sundowners.