

The Views

LUXURIOUS LIFESTYLE. PREMIUM VIEWS.

16 FAIRWAY PLACE



UNPARALLELED LUXURY



3 Bedrooms



2 Bathrooms



2 Garage

PRICE

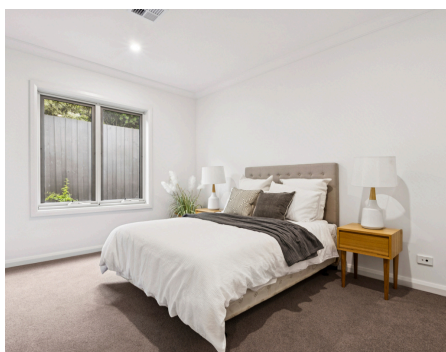
\$1,380,000

STYLE

STAND ALONE

SIZE

153m2



Step into unparalleled luxury with this magnificent residence. Offering the perfect blend of comfort and style, with three generously sized bedrooms, including a spacious master, complete with a walk-in robe and private ensuite. A modern kitchen in the heart of the residence boasts exquisite stone benchtops and splash backs, complemented by top-of-the-line appliances.

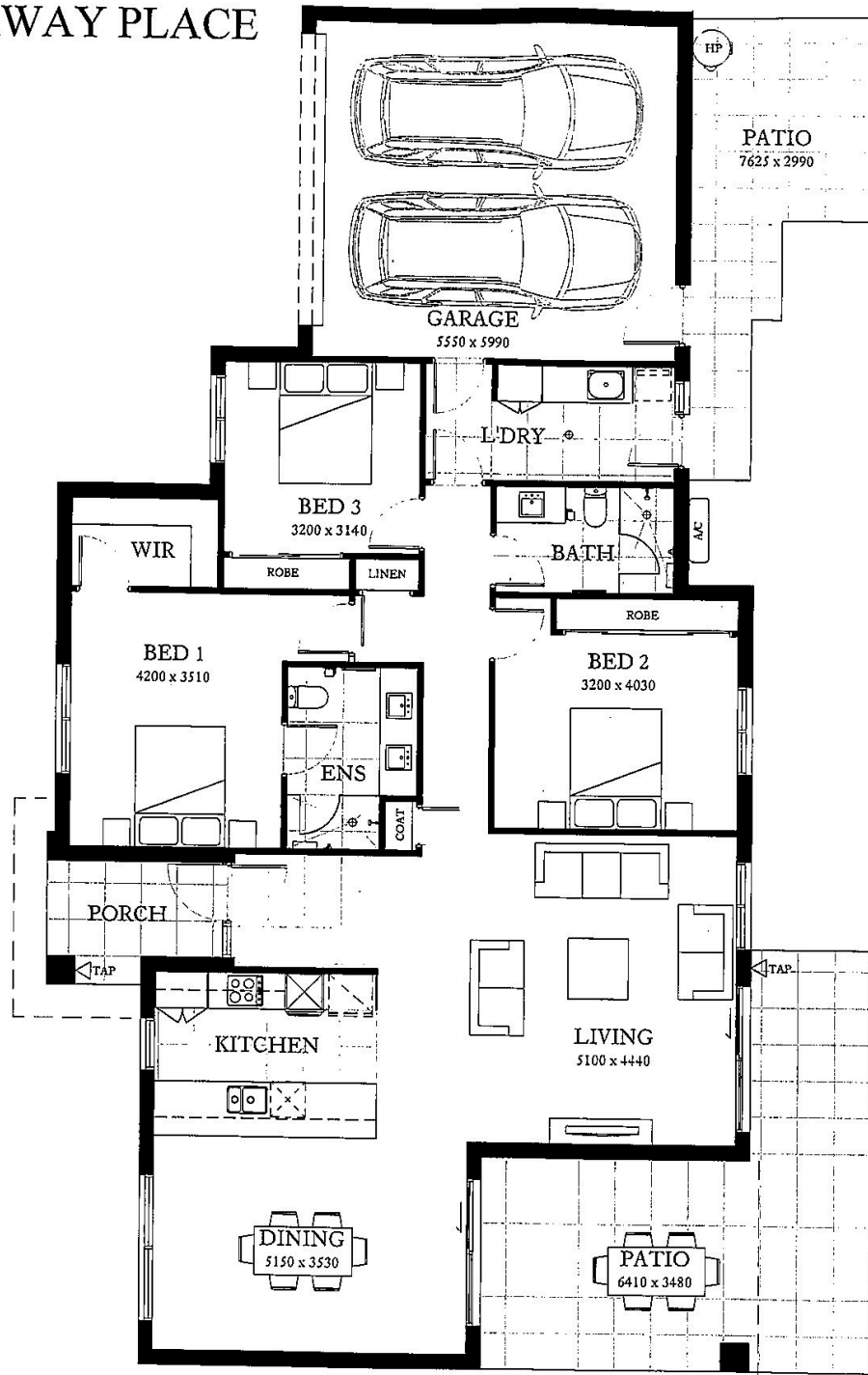
Relax and enjoy elegance in an open plan living area, creating an ideal space for both intimate gatherings and entertainment. The residence offers a spacious double-car garage with convenient internal access, ample storage space and quality finishes.

Sales@Rivervue.com.au
1300 298 439

RIVERVUE

LIFE BEGINS AT RIVERVUE

FAIRWAY PLACE



VILLA 153 FLOOR PLAN TYPE D7

These plans are indicative only and subject to change. All dimensions are approximate. Please note, this floor plan was produced prior to construction, and that changes will undoubtedly be made during development. Services, bulkheads, landscaping and down pipes are not depicted.

FLOOR AREA: 153m² (16sq's)
GARAGE AREA: 37m² (4sq's)
EXTERNAL PAVED AREA: 44m² (5sq's)
TOTAL AREA: 234m² (25sq's)
(Approximate only)

