

# The Views

LUXURIOUS LIFESTYLE. PREMIUM VIEWS.

18 WATERGUM TERRACE



## LUXURY MEETS SERENITY

2



Bedrooms

2



Bathrooms

1



Garage

PRICE

**\$930,000**

STYLE

COURT YARD

SIZE

112m<sup>2</sup>

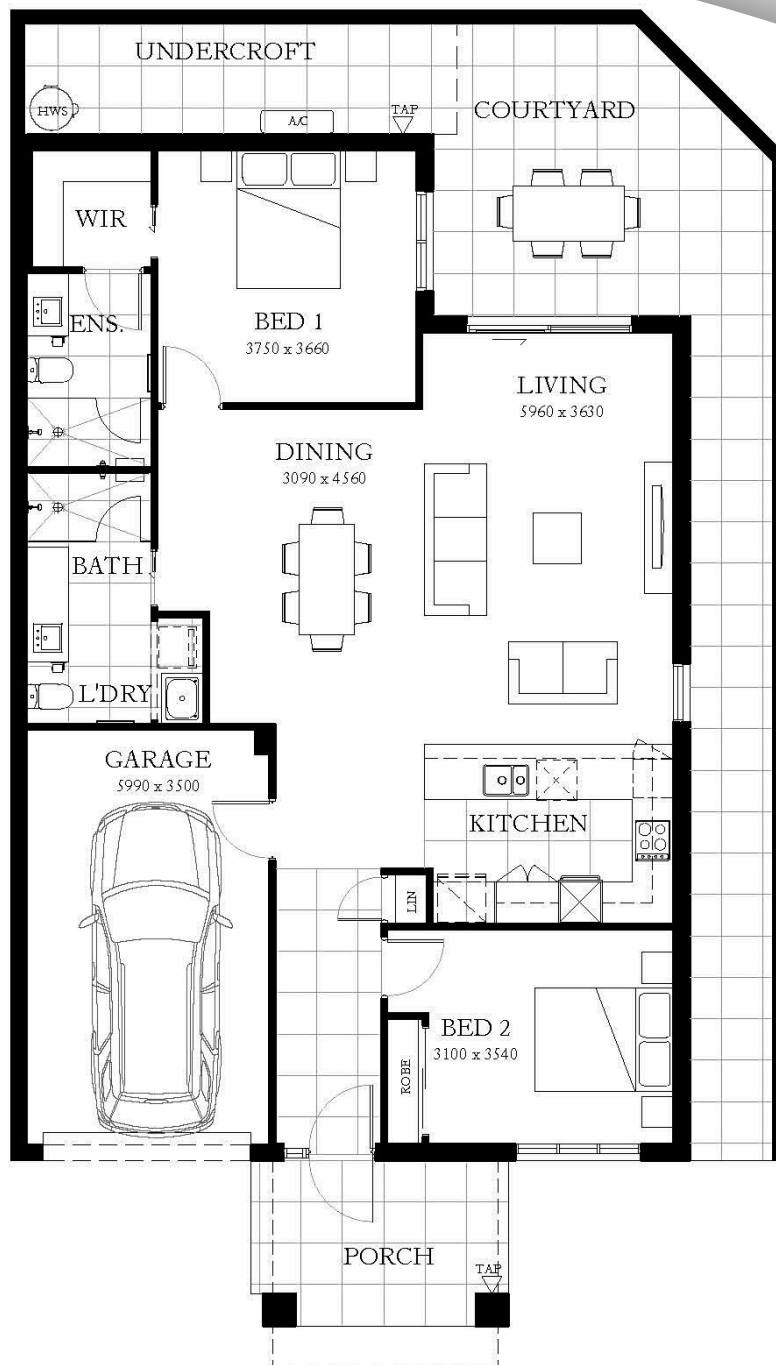


Welcome to Rivervue Retirement Village, where luxury meets serenity. This new pristine, modern 2-bedroom, 2-bathroom villa is in a sought-after corner position with fabulous views. The main bedroom features a large WIR, and ensuite and the 2nd bedroom is serviced by its own bathroom. The open plan living opens to a private courtyard, perfect for entertaining family and friends. But the allure doesn't stop there. Outside, you'll be surrounded by lush greenery and scenic walking trails that wind along the picturesque Maribyrnong River. Enjoy tranquil views and easy access to nature, all from the comfort of your home.

[sales@rivervue.com.au](mailto:sales@rivervue.com.au)  
1300 298 439

**RIVERVUE**

LIFE BEGINS AT RIVERVUE

**VILLA 155****FLOOR PLAN TYPE E2**

These plans are indicative only and subject to change. All dimensions are approximate. Please note, this floor plan was produced prior to construction, and that changes will undoubtedly be made during development. Services, bulkheads, landscaping and down pipes are not depicted.

FLOOR AREA: 112m<sup>2</sup> (12sq's)  
 GARAGE AREA: 24m<sup>2</sup> (3sq's)  
 EXTERNAL PAVED AREA: 46m<sup>2</sup> (5sq's)  
 TOTAL AREA: 182m<sup>2</sup> (20sq's)  
 (Approximate only)

