



MODERN LIVING, PRIME LOCATION

PRICE

\$810,000

TYPE

10 REDFERN LANE

STYLE BALCONY

SIZE 103sqm

VILLA OVERVIEW

 2
Bedrooms

 2
Bathrooms

 1
Garage



KITCHEN



LIVING



BEDROOM



BATHROOM

This beautifully designed 2-bedroom villa, located within walking distance of the community centre, where you can experience a range of activities and amenities to enrich your lifestyle.

Featuring an open plan layout that has a well-appointed kitchen with an adjoining dining area, and expansive living space. Enjoy entertaining on your generous sized balcony or relax and enjoy a good book whilst welcoming the warm summer days. Two great sized bedrooms, main bedroom with ensuite, Bosch appliances, and a single garage with internal access compliment this home.

Safety and convenience are priorities with gated access, CCTV, intercom systems, and an Emergency Response System for peace of mind. Make the next move to a home designed for comfort and style.

RIVERVUE
LIFE BEGINS AT RIVERVUE

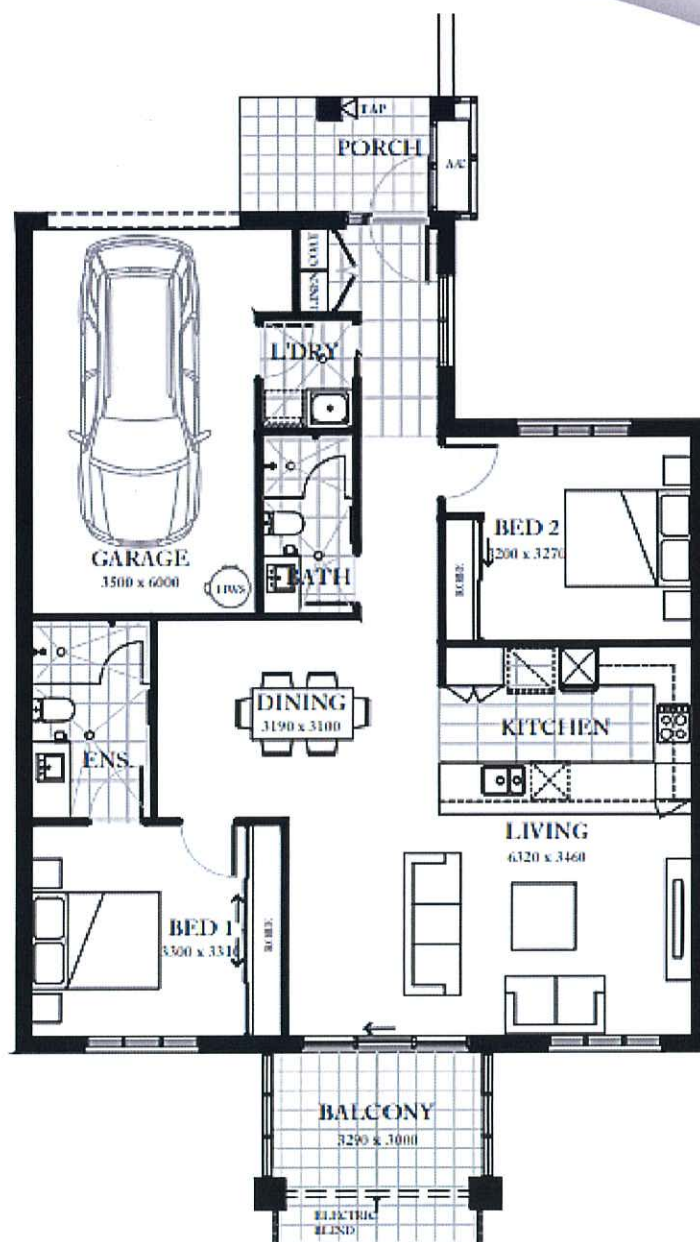


Sales@Rivervue.com.au

1300 298 439

10 REDFERN LANE

\$810,000



VILLA 96

FLOOR PLAN TYPE F

These plans are indicative only and subject to change. All dimensions are approximate. Please note, this floor plan was produced prior to construction, and that changes will undoubtedly be made during development. Services, bulkheads, landscaping and down pipes are not depicted.

FLOOR AREA: 103m² (11sq's)
 GARAGE AREA: 23m² (2sq's)
 EXTERNAL PAVED AREA: 14m² (2sq's)
 TOTAL AREA: 140m² (15sq's)
 (Approximate only)



REVISION: A 6/12/2018

RIVERVUE

LIFE BEGINS AT RIVERVUE



Sales@Rivervue.com.au

1300 298 439