

Azura

Coastal White



Artist Impression



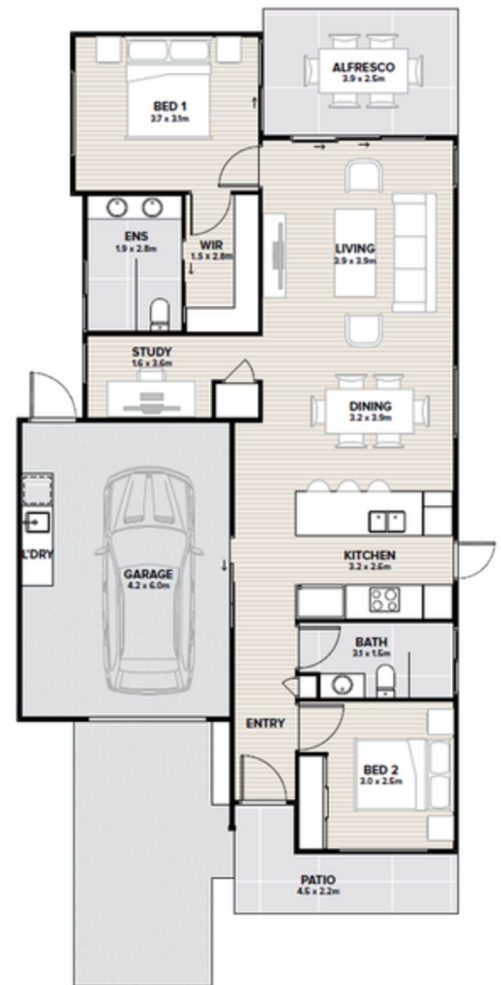
FLOORSPACE

Area based on external wall footprint

Living	92.4m ²
Alfresco	10.1m ²
Garage	27.4m ²
Porch	6.5m ²
Total	136.4m ²

Thoughtfully appointed and effortlessly elegant, Azura is complete with everything you need for a life of ease.

- Master bedroom with double-vanity ensuite, walk-in-robe and alfresco access
- Generously sized second bedroom with built-in robe
- Central bathroom with floor-to-ceiling tiling
- Open plan living and dining with seamless connection to the outdoors
- Ergonomically designed kitchen with quality European appliances, featuring a stunning skylight
- Separate study adds flexibility without compromise
- Built-in laundry, conveniently located in the garage, enhances everyday functionality
- Ceiling fans, solar system and air-conditioning throughout



Artist impression. Not to scale and subject to change and approvals.

Thyme Lifestyle Resort Palm Cove
71 Williams Esplanade, Palm Cove 4879

Michelle Fitzjohn
Sales Consultant
0491 945 734

palmcove.thyme.com.au

1300 120 444 | palmcove@thyme.com.au

THYME
LIFESTYLE RESORT

PALM COVE

Azura

Hinterland



Artist Impression



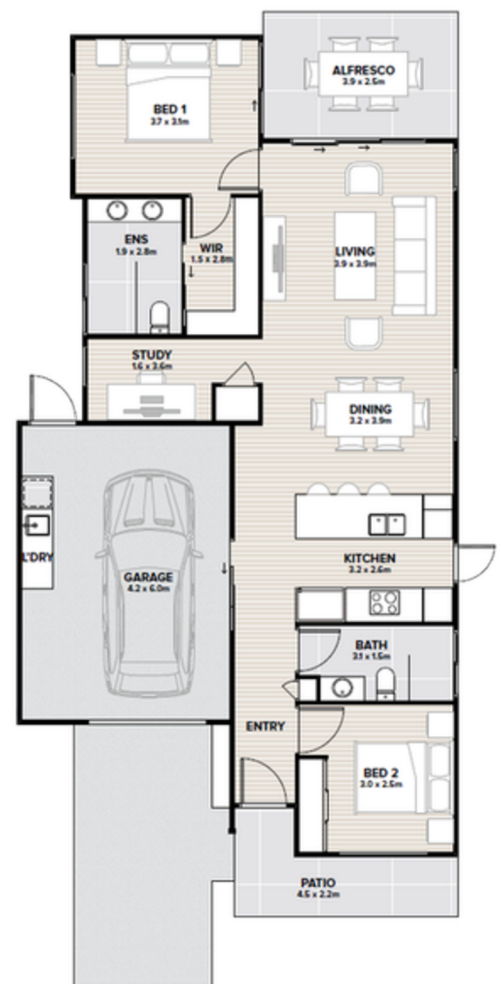
FLOORSPACE

Area based on external wall footprint

Living	92.4m ²
Alfresco	10.1m ²
Garage	27.4m ²
Porch	6.5m ²
Total	136.4m ²

Thoughtfully appointed and effortlessly elegant, Azura is complete with everything you need for a life of ease.

- Master bedroom with double-vanity ensuite, walk-in-robe and alfresco access
- Generously sized second bedroom with built-in robe
- Central bathroom with floor-to-ceiling tiling
- Open plan living and dining with seamless connection to the outdoors
- Ergonomically designed kitchen with quality European appliances, featuring a stunning skylight
- Separate study adds flexibility without compromise
- Built-in laundry, conveniently located in the garage, enhances everyday functionality
- Ceiling fans, solar system and air-conditioning throughout



Artist impression. Not to scale and subject to change and approvals.

Thyme Lifestyle Resort Palm Cove
71 Williams Esplanade, Palm Cove 4879

Michelle Fitzjohn
Sales Consultant
0491 945 734

palmcove.thyme.com.au

1300 120 444 | palmcove@thyme.com.au

THYME
LIFESTYLE RESORT

PALM COVE