

# Crystal

## Coastal White



Artist Impression



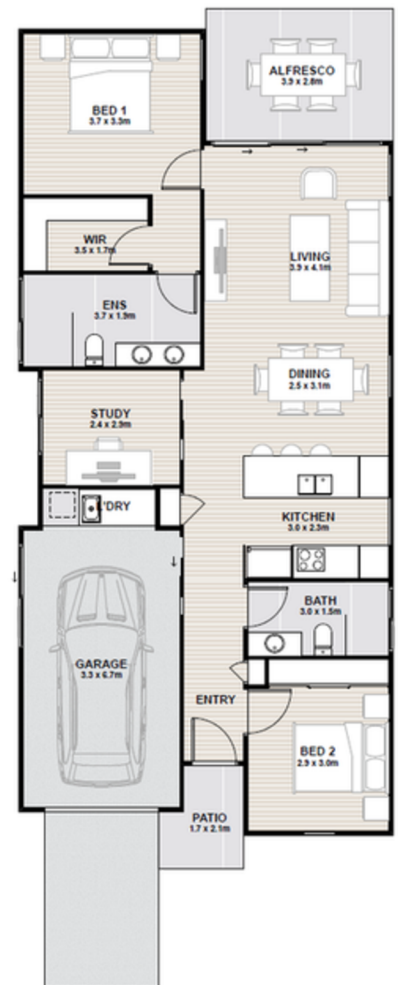
### FLOORSPACE

Area based on external wall footprint

|          |                     |
|----------|---------------------|
| Living   | 98.9m <sup>2</sup>  |
| Alfresco | 9.1m <sup>2</sup>   |
| Garage   | 21.2m <sup>2</sup>  |
| Porch    | 3.4m <sup>2</sup>   |
| Total    | 132.6m <sup>2</sup> |

At its heart, Crystal radiates warmth and serenity, making it an ideal choice for a comfortable lifestyle.

- Open plan living and dining with seamless connection to the outdoors
- Ergonomically designed kitchen with quality European appliances
- Master bedroom with double-vanity ensuite, walk-in-robe and alfresco access
- Generously sized second bedroom with built-in robe
- Central bathroom with floor-to-ceiling tiling
- Separate study adds flexibility without compromise
- Built-in laundry, conveniently located in the garage, enhances everyday functionality
- Ceiling fans, solar system and air-conditioning throughout



Artist impression. Not to scale and subject to change and approvals.

Thyme Lifestyle Resort Palm Cove  
71 Williams Esplanade, Palm Cove 4879

Michelle Fitzjohn  
Sales Consultant  
0491 945 734

[palmcove.thyme.com.au](http://palmcove.thyme.com.au)

1300 120 444 | [palmcove@thyme.com.au](mailto:palmcove@thyme.com.au)

**THYME**  
LIFESTYLE RESORT

PALM COVE

# Crystal

## Grey Mist



Artist Impression



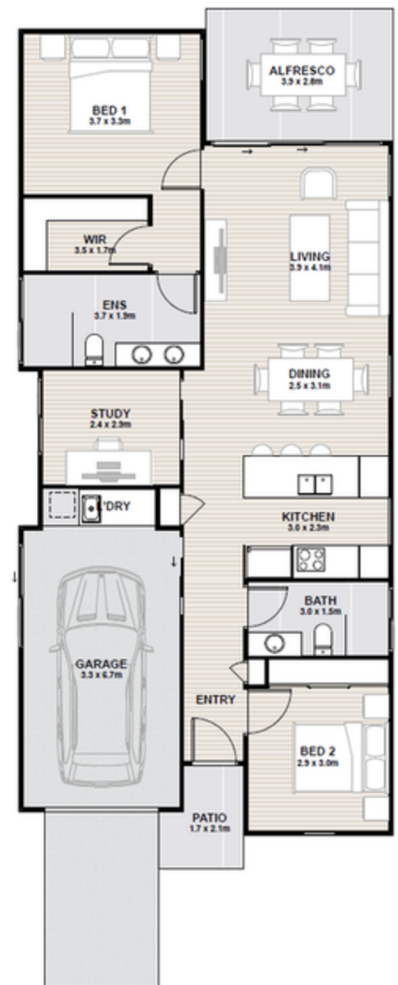
### FLOORSPACE

Area based on external wall footprint

|          |                     |
|----------|---------------------|
| Living   | 98.9m <sup>2</sup>  |
| Alfresco | 9.1m <sup>2</sup>   |
| Garage   | 21.2m <sup>2</sup>  |
| Porch    | 3.4m <sup>2</sup>   |
| Total    | 132.6m <sup>2</sup> |

At its heart, Crystal radiates warmth and serenity, making it an ideal choice for a comfortable lifestyle.

- Open plan living and dining with seamless connection to the outdoors
- Ergonomically designed kitchen with quality European appliances
- Master bedroom with double-vanity ensuite, walk-in-robe and alfresco access
- Generously sized second bedroom with built-in robe
- Central bathroom with floor-to-ceiling tiling
- Separate study adds flexibility without compromise
- Built-in laundry, conveniently located in the garage, enhances everyday functionality
- Ceiling fans, solar system and air-conditioning throughout



Artist impression. Not to scale and subject to change and approvals.

Thyme Lifestyle Resort Palm Cove  
71 Williams Esplanade, Palm Cove 4879

Michelle Fitzjohn  
Sales Consultant  
0491 945 734

[palmcove.thyme.com.au](http://palmcove.thyme.com.au)

1300 120 444 | [palmcove@thyme.com.au](mailto:palmcove@thyme.com.au)

**THYME**  
LIFESTYLE RESORT

PALM COVE

# Crystal Hinterland



Artist Impression



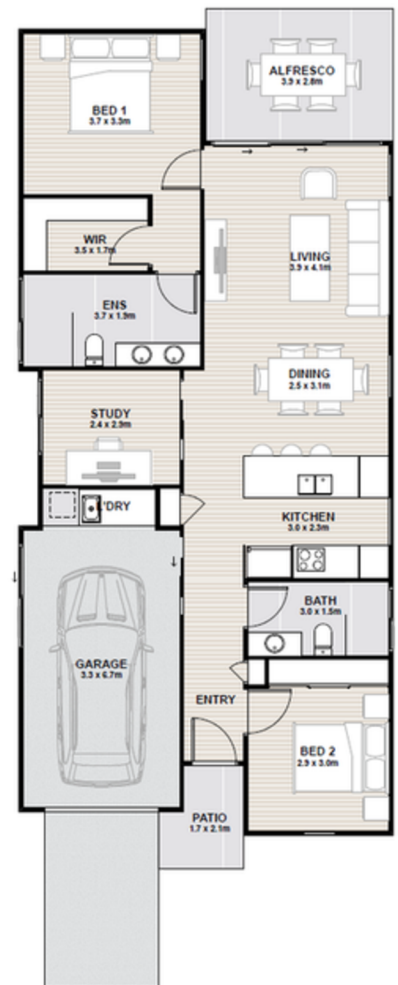
## FLOORSPACE

Area based on external wall footprint

|          |                     |
|----------|---------------------|
| Living   | 98.9m <sup>2</sup>  |
| Alfresco | 9.1m <sup>2</sup>   |
| Garage   | 21.2m <sup>2</sup>  |
| Porch    | 3.4m <sup>2</sup>   |
| Total    | 132.6m <sup>2</sup> |

At its heart, Crystal radiates warmth and serenity, making it an ideal choice for a comfortable lifestyle.

- Open plan living and dining with seamless connection to the outdoors
- Ergonomically designed kitchen with quality European appliances
- Master bedroom with double-vanity ensuite, walk-in-robe and alfresco access
- Generously sized second bedroom with built-in robe
- Central bathroom with floor-to-ceiling tiling
- Separate study adds flexibility without compromise
- Built-in laundry, conveniently located in the garage, enhances everyday functionality
- Ceiling fans, solar system and air-conditioning throughout



Artist impression. Not to scale and subject to change and approvals.

Thyme Lifestyle Resort Palm Cove  
71 Williams Esplanade, Palm Cove 4879

Michelle Fitzjohn  
Sales Consultant  
0491 945 734

[palmcove.thyme.com.au](http://palmcove.thyme.com.au)

1300 120 444 | [palmcove@thyme.com.au](mailto:palmcove@thyme.com.au)

**THYME**  
LIFESTYLE RESORT

PALM COVE