

Luca

Coastal White



Artist Impression



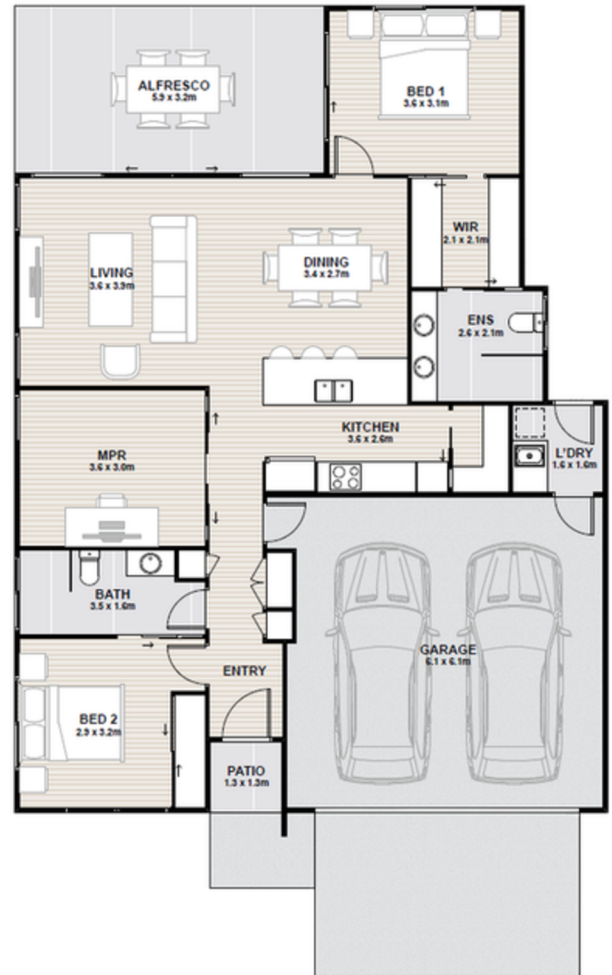
FLOORSPACE

Area based on external wall footprint

Living	106.7m ²
Alfresco	19.2m ²
Garage	38.6m ²
Porch	4.8m ²
Total	169.3m ²

Alive with warmth, Luca invites connection with neighbours, friends and family alike.

- Master bedroom with double-vanity ensuite, double-sided walk-in-robe and alfresco access
- Open plan living and dining room
- Kitchen features a walk-in pantry and quality European appliances
- Central bathroom with floor-to-ceiling tiling
- Generous multipurpose room adapts to your lifestyle.
- Seamless connectivity from the double garage through to the laundry and outdoor line
- Ceiling fans, solar system and air-conditioning throughout



Artist impression. Not to scale and subject to change and approvals.

Thyme Lifestyle Resort Palm Cove
71 Williams Esplanade, Palm Cove 4879

Michelle Fitzjohn
Sales Consultant
0491 945 734

palmcove.thyme.com.au

1300 120 444 | palmcove@thyme.com.au

THYME
LIFESTYLE RESORT

PALM COVE

Luca

Hinterland



Artist Impression



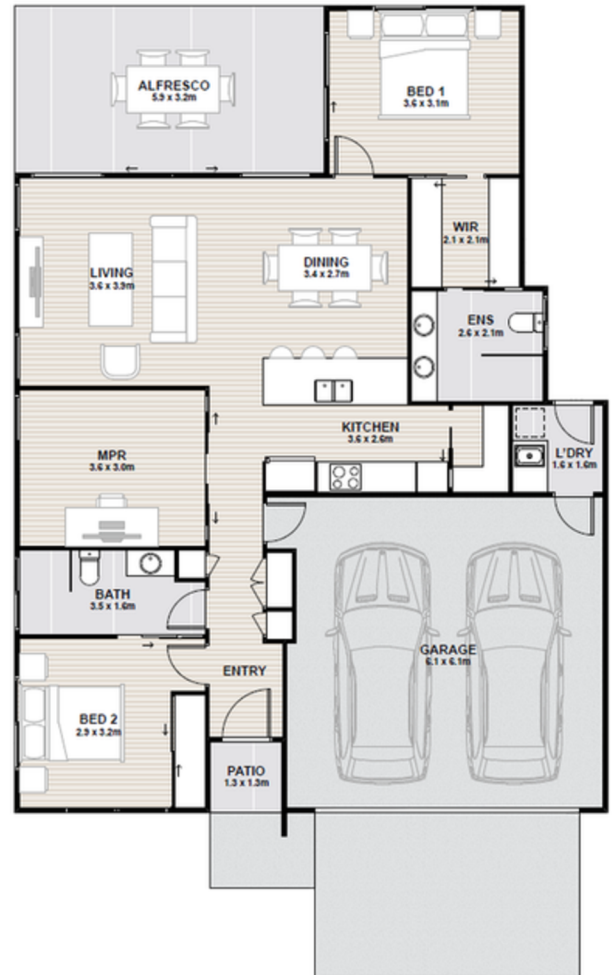
FLOORSPACE

Area based on external wall footprint

Living	106.7m ²
Alfresco	19.2m ²
Garage	38.6m ²
Porch	4.8m ²
Total	169.3m ²

Alive with warmth, Luca invites connection with neighbours, friends and family alike.

- Master bedroom with double-vanity ensuite, double-sided walk-in-robe and alfresco access
- Open plan living and dining room
- Kitchen features a walk-in pantry and quality European appliances
- Central bathroom with floor-to-ceiling tiling
- Generous multipurpose room adapts to your lifestyle.
- Seamless connectivity from the double garage through to the laundry and outdoor line
- Ceiling fans, solar system and air-conditioning throughout



Artist impression. Not to scale and subject to change and approvals.

Thyme Lifestyle Resort Palm Cove
71 Williams Esplanade, Palm Cove 4879

Michelle Fitzjohn
Sales Consultant
0491 945 734

palmcove.thyme.com.au

1300 120 444 | palmcove@thyme.com.au

THYME
LIFESTYLE RESORT

PALM COVE