

# The Wilson



🛏️ 2 🍷 2 🏠 2

The Wilson makes everyday living effortless. Two bedrooms, including a main with an ensuite, plus built-in robes and a family bathroom, give everyone space to relax. A handy study nook and European laundry add extra convenience.

## Features you'll love:

- A generous alfresco that turns your weekends into mini holidays at home
- Bi-fold doors that bring the outdoors in
- A smart study nook and European laundry, proof that every inch is put to good use

**Lincoln  
Lifestyle**  
Griffith Hill

For more information:

1300 844 492 [info@lincolnplace.com.au](mailto:info@lincolnplace.com.au)

# The Wilson

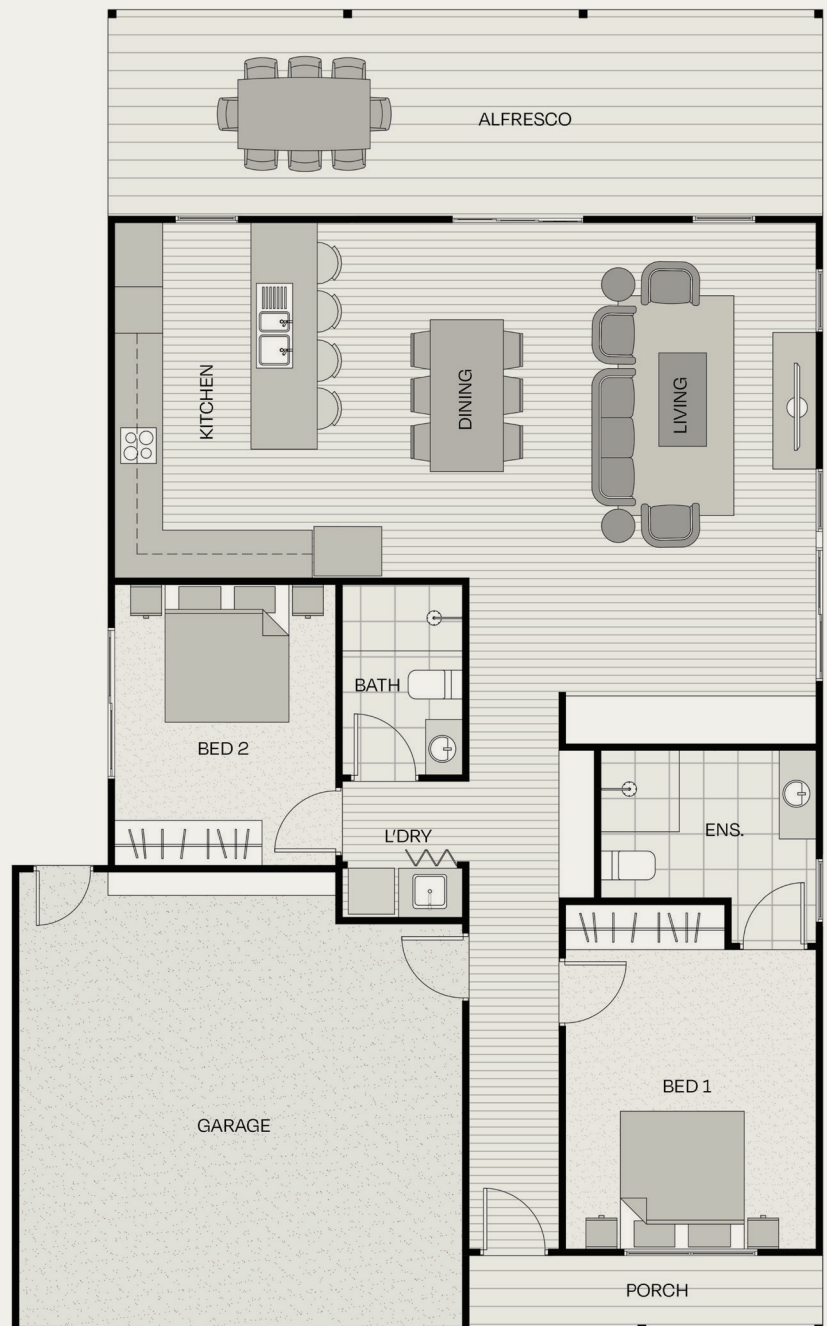


# Floorplan

Total Area	155m <sup>2</sup>
Internal Living Area	93m <sup>2</sup>
External Living Area	27m <sup>2</sup>
Garage	32m <sup>2</sup>

## Dimensions (m)

Living	4.0 x 3.0
Dining	3.1 x 2.4
Kitchen	4.7 x 2.6
Bed 1	3.8 x 3.1
Bed 2	3.5 x 2.8
Bathroom	2.4 x 1.5
Ensuite	2.4 x 2.7
Alfresco	2.6 x 9.0
Porch	1.0 x 4.4
Garage	5.7 x 5.6



Disclaimer: This plan is an artist's impression. Measurements are approximate and are to be used as a guide only.

## Colour Selections

Customise your home with a range of colourways.  
Pair any interior palette with your favourite exterior look.

**Classic** – Classic warmth with modern ease

**Contemporary** – Clean lines and fresh style

Scan to view colour selections

**Country** – Natural tones, modern comfort

**Coastal** – Relaxed, breezy sophistication



# Your home inclusions

And upgrades designed for you

---

## External

Architecturally designed homes

---

Coastal style cladding

---

Colourbond roof

---

Fully enclosed lock-up garage

---

Covered alfresco outdoor areas

---

Slab on ground with termite controls

---

Insulated roof and walls

---

Powder coated aluminium frame windows

---

Flyscreens to all windows and external doors

---

Garden taps to front and rear yards

---

## Internal

2.7m high ceilings

---

Vinyl plank flooring to kitchen, hallway and living areas

---

Tile flooring to bathroom and laundry

---

Carpet to bedrooms

---

Built-in wardrobes to bedrooms

---

Timber architraves and skirting board

---

Plantation shutters to front bedroom

---

## Kitchen

Double stainless steel undermounted sink

---

Stainless steel 60cm oven and four zone cooktop

---

Slide out rangehood

---

60cm built-in dishwasher

---

Soft close drawers and cupboards

---

Microwave space with powerpoint

---

## Bathroom & Laundry

Frameless glass shower screens

---

Chrome finished tapware and hardware

---

Laundry tub and mixer

---

Separate vanity with Caesarstone top

---

Frameless mirror over vanities

---

Floor tiling to bathroom and laundry

---

Wall tiles in shower to top of screen

---

## Electrical & Climate

LED downlights throughout

---

USB powerpoints to kitchen and main bedroom

---

Phone connection to living area

---

Smoke detectors

---

Ceiling fans to bedrooms

---

Fully ducted reverse cycle air conditioning

---

160L electric hot water unit

---

## Optional Upgrades

Pendant lights to kitchen

---

Timber flooring upgrade

---

Solar panels

---

Epoxy coating in garage

---

20mm Caesarstone benchtop with island bench

---

Disclaimer: Any information or content provided in this document is intended as a general information only and does not form an offer, guarantee or contract and does not constitute business, financial or real estate advice. You should make your own enquiries, (including as to the accuracy, currency, reliability or completeness of any information provided) and obtain professional advice where appropriate, before making any such decision. All care has been taken in the preparation of the information and published materials produced by Lincoln Place including, but not limited to, price, property area, floor size and general property description. However, Lincoln Place does not make any representations or give any warranties about its accuracy, reliability, completeness or suitability for any particular purpose. Information, furnishings, images and artistic impressions of exteriors and interiors are intended as a guidance for illustrative purposes only and may contain optional items that are not included as standard. The information, pricing, availability, dimensions, specifications, inclusions, landscaping and materials may be changed without notice. Optional upgrades are subject to availability. Ask your sales team for more information. August 2025.