

# Stradbroke



2 | 1 | 2 | 2

## FLOORSPACE

Area based on external wall footprint

Living Area	117.76m <sup>2</sup>
Alfresco + Porch	18.15m <sup>2</sup>
Garage	37.90m <sup>2</sup>
Total	173.81m <sup>2</sup>

## CONTEMPORARY COASTAL

The Stradbroke embraces coastal charm, with its endearing dutch gable roofline, giving the home a welcoming sense of character. Inside, the layout includes two spacious bedrooms, a generous master suite with walk-in robe and ensuite, and a versatile multi-purpose room for hobbies or guests.

The open-plan living, dining and kitchen area connects effortlessly to the covered alfresco. The kitchen offers quality appliances, a walk-in pantry and central island bench. With internal access from the double garage and a layout made for a lock-up-and-leave lifestyle, Stradbroke is contemporary living made simple.

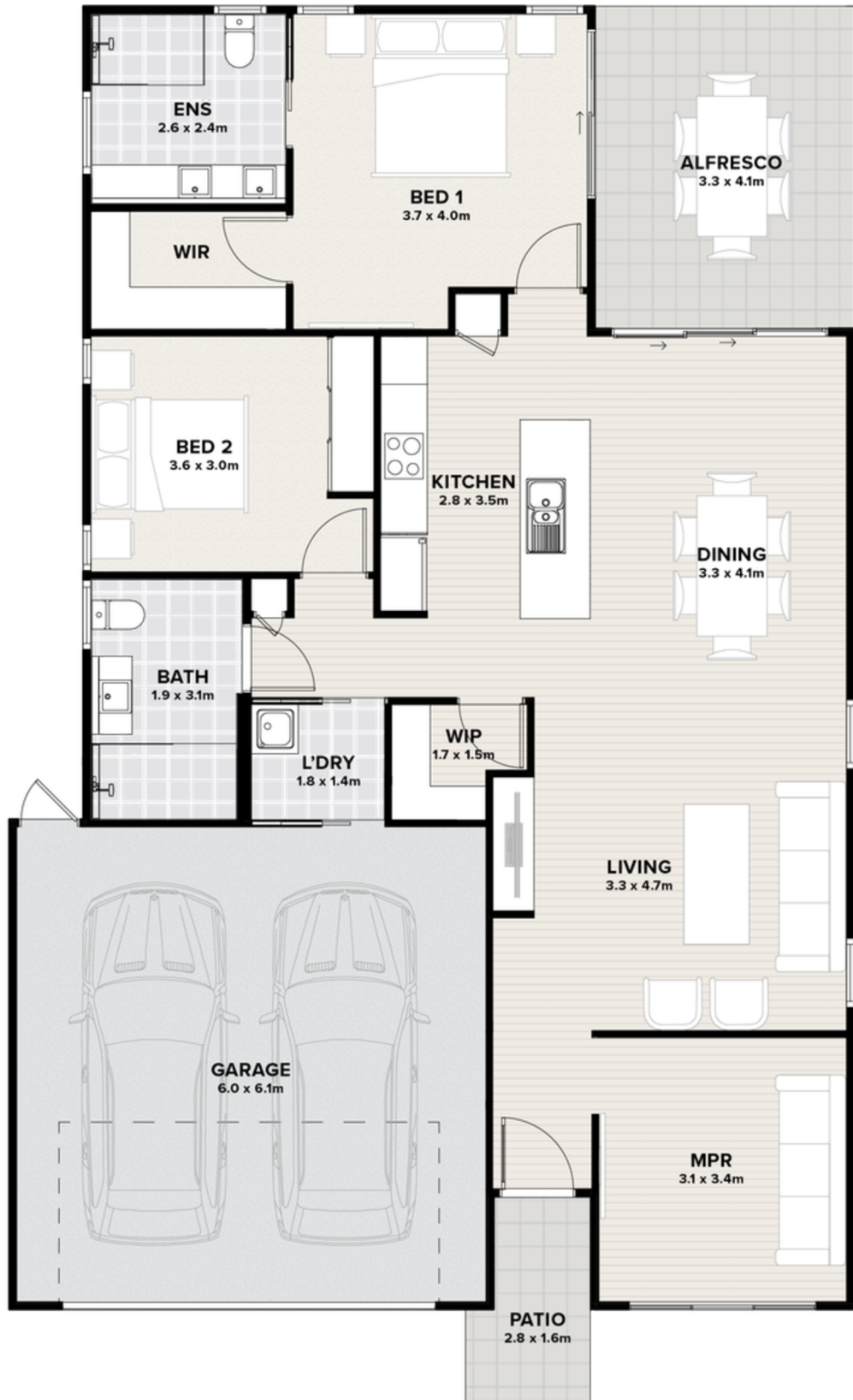
**Thyme Lifestyle Resort Rothwell**  
515 Anzac Avenue, Rothwell, QLD 4022

[rothwell.thyme.com.au](http://rothwell.thyme.com.au)  
1300 719 843 | [rothwell@thyme.com.au](mailto:rothwell@thyme.com.au)

**THYME**  
LIFESTYLE RESORT

ROTHWELL

# Stradbroke



Artist impression.  
Not to scale and subject to change and approvals.

**Thyme Lifestyle Resort Rothwell**  
515 Anzac Avenue, Rothwell, QLD 4022

[rothwell.thyme.com.au](http://rothwell.thyme.com.au)  
1300 719 843 | [rothwell@thyme.com.au](mailto:rothwell@thyme.com.au)

**THYME**  
LIFESTYLE RESORT

ROTHWELL