

Azure



2 | 1 | 2 | 2

FLOORSPACE

Area based on external wall footprint

Living Area	117.76m ²
Alfresco + Porch	22.84m ²
Garage	37.90m ²
Total	178.51m ²

VERSATILE AND INVITING

The Azure is a beautifully appointed home designed for ease and comfort, with two spacious bedrooms including a generous master retreat with walk-in robe and private ensuite. A flexible multi-purpose room offers space for a study, third bedroom or creative studio.

Light-filled open-plan living flows to a private alfresco, perfect for relaxing or entertaining. The designer kitchen features a premium appliance suite, walk-in pantry, and oversized island bench. A double garage with internal access, dedicated laundry, and a low-maintenance, single-level layout make the Azure a seamless blend of functionality and style.

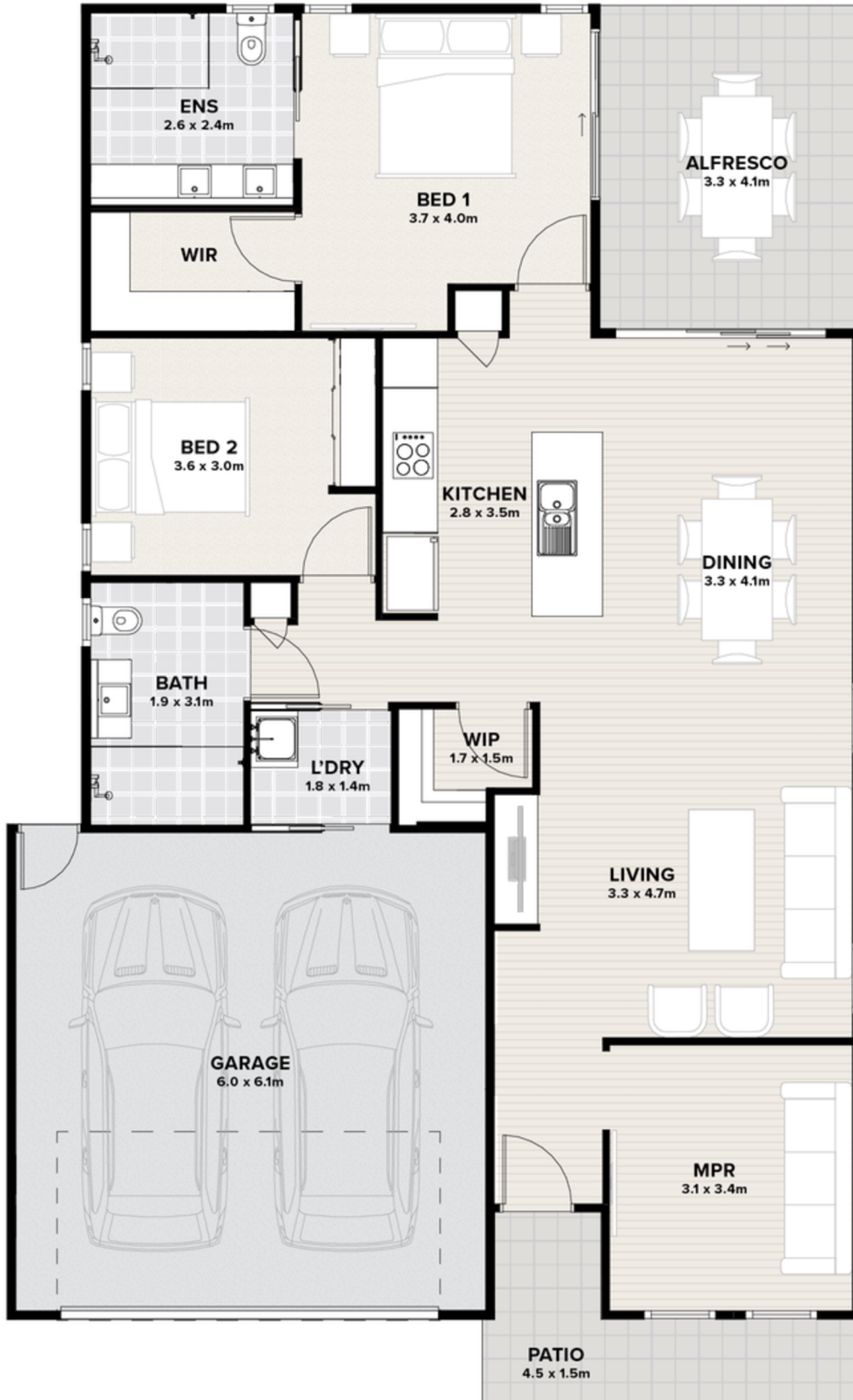
Thyme Lifestyle Resort Rothwell
515 Anzac Avenue, Rothwell, QLD 4022

rothwell.thyme.com.au
1300 719 843 | rothwell@thyme.com.au

THYME
LIFESTYLE RESORT

ROTHWELL

Azure



Artist impression.
Not to scale and subject to change and approvals.

Thyme Lifestyle Resort Rothwell
515 Anzac Avenue, Rothwell, QLD 4022

rothwell.thyme.com.au
1300 719 843 | rothwell@thyme.com.au

THYME
LIFESTYLE RESORT

ROTHWELL