

# Sapphire



## EFFORTLESS COMFORT

Sapphire offers easy living with a well-considered layout that suits singles, couples or those looking to downsize. Inside, you'll find two generously sized bedrooms including a master with walk-in robe and private ensuite, along with a convenient study nook ideal for working from home or quiet reading.

The heart of the home is its open-plan kitchen, living and dining area, which flows effortlessly to the covered alfresco, creating a natural indoor-outdoor connection. A modern, fresh façade style gives Sapphire a distinct new look, complemented by a single garage with internal access and low-maintenance gardens that enhance its practical, easy-living appeal.

## FLOORSPACE

Area based on external wall footprint

Living Area	96.87m <sup>2</sup>
Alfresco + Porch	18.33m <sup>2</sup>
Garage	23.51m <sup>2</sup>
Total	138.71m <sup>2</sup>

### Thyme Lifestyle Resort Rothwell

515 Anzac Avenue, Rothwell, QLD 4022

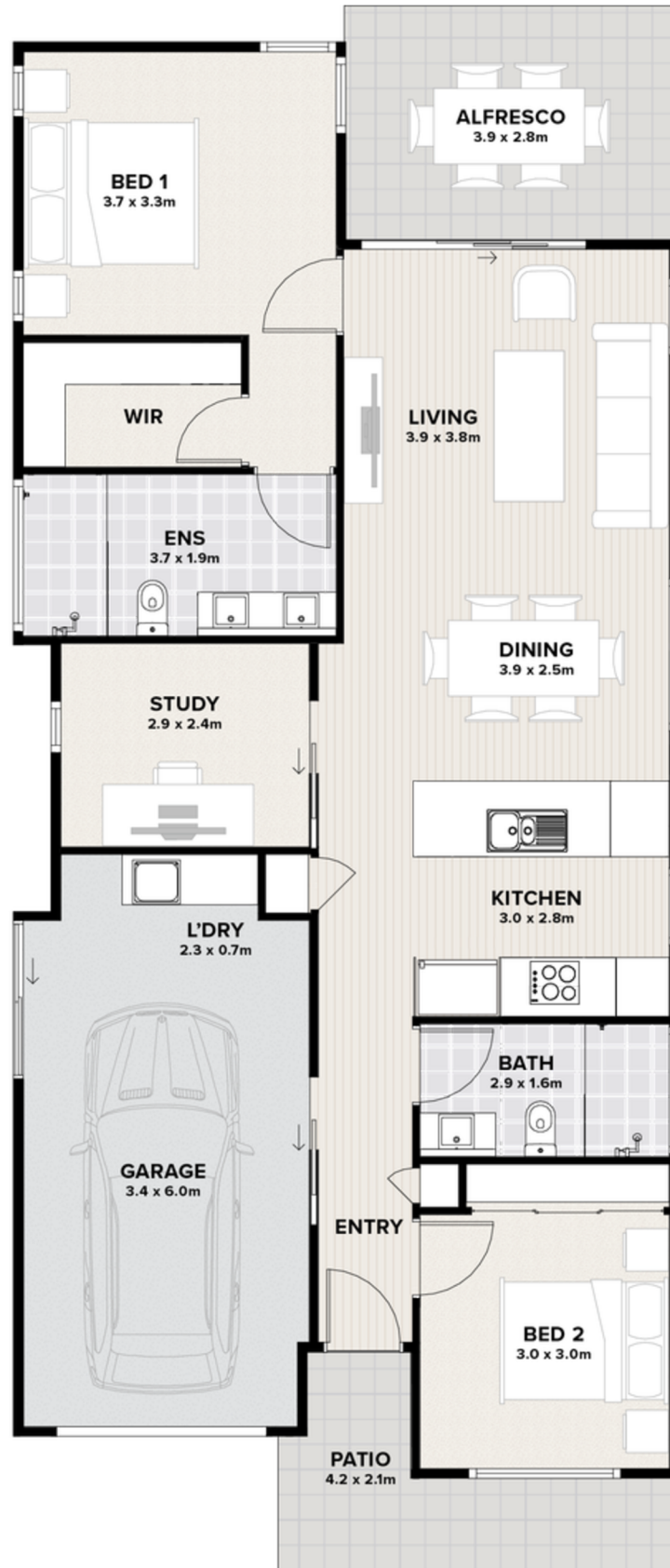
[rothwell.thyme.com.au](http://rothwell.thyme.com.au)

1300 719 843 | [rothwell@thyme.com.au](mailto:rothwell@thyme.com.au)

**THYME**  
LIFESTYLE RESORT

ROTHWELL

# Sapphire



Artist impression.  
Not to scale and subject to change and approvals.

**Thyme Lifestyle Resort Rothwell**  
515 Anzac Avenue, Rothwell, QLD 4022

[rothwell.thyme.com.au](http://rothwell.thyme.com.au)  
1300 719 843 | [rothwell@thyme.com.au](mailto:rothwell@thyme.com.au)

**THYME**  
LIFESTYLE RESORT

ROTHWELL