

# Pearl



Artist Impression



## COMPACT AND CLEVER

Pearl delivers comfort and charm in a smart, compact design ideal for singles, couples or downsizers. It features two spacious bedrooms, including a master with ensuite and walk-in robe, plus a handy study nook perfect for reading or working from home.

An open-plan kitchen, living and dining zone extends to a covered alfresco for seamless indoor-outdoor living. The home's gabled façade, two-tone cladding and timber front door add strong street appeal, while the single garage with internal access and low-maintenance landscaping complete this stylish, functional home.

## FLOORSPACE

Area based on external wall footprint

Living Area	96.87m <sup>2</sup>
Alfresco + Porch	18.33m <sup>2</sup>
Garage	23.51m <sup>2</sup>
Total	138.71m <sup>2</sup>

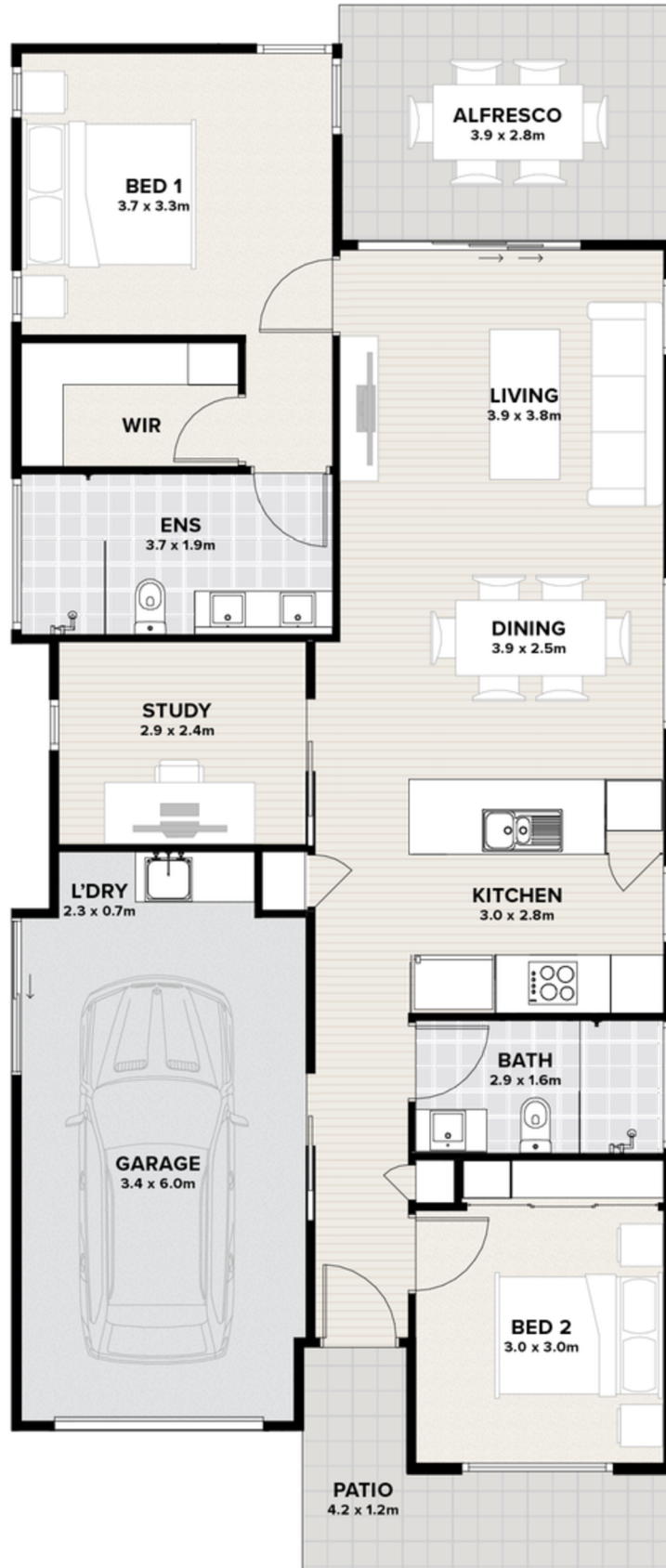
**Thyme Lifestyle Resort Rothwell**  
515 Anzac Avenue, Rothwell, QLD 4022

[rothwell.thyme.com.au](http://rothwell.thyme.com.au)  
1300 719 843 | [rothwell@thyme.com.au](mailto:rothwell@thyme.com.au)

**THYME**  
LIFESTYLE RESORT

ROTHWELL

# Pearl



Artist impression.  
Not to scale and subject to change and approvals.

**Thyme Lifestyle Resort Rothwell**  
515 Anzac Avenue, Rothwell, QLD 4022

[rothwell.thyme.com.au](http://rothwell.thyme.com.au)  
1300 719 843 | [rothwell@thyme.com.au](mailto:rothwell@thyme.com.au)

**THYME**  
LIFESTYLE RESORT

ROTHWELL