

# Voyager



## SPACIOUS AND TRAVEL-READY

The Voyager is a generous three-bedroom home designed for those who value space, flexibility and the freedom to travel. It features a master suite with walk-in robe and ensuite and two additional bedrooms. The heart of the home is a large open-plan kitchen, living and dining area that flows to a covered alfresco.

The designer kitchen includes a walk-in pantry and large island bench, while a walk-through laundry links directly to the kitchen from the garage. A key feature is the RV-height double garage, ideal for storing a caravan, motorhome or boat, making Voyager the perfect base for an adventurous lifestyle.

## FLOORSPACE

Area based on external wall footprint

Living	128.58m <sup>2</sup>
Alfresco + Porch	24.33m <sup>2</sup>
Garage	55.93m <sup>2</sup>
Total	208.84m <sup>2</sup>

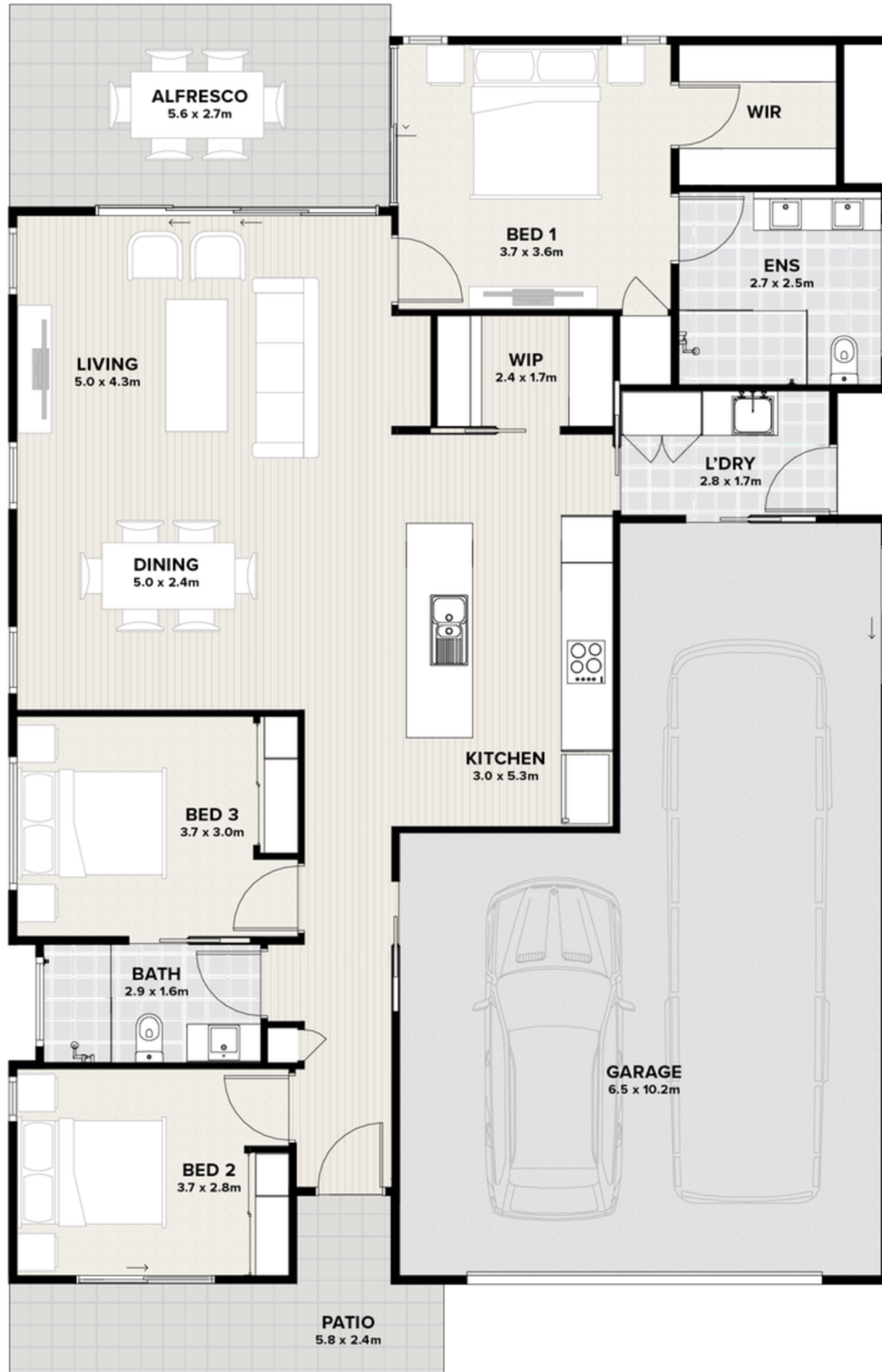
**Thyme Lifestyle Resort Rothwell**  
515 Anzac Avenue, Rothwell, QLD 4022

[rothwell.thyme.com.au](http://rothwell.thyme.com.au)  
1300 719 843 | [rothwell@thyme.com.au](mailto:rothwell@thyme.com.au)

**THYME**  
LIFESTYLE RESORT

ROTHWELL

# Voyager



Artist impression.  
Not to scale and subject to change and approvals.

**Thyme Lifestyle Resort Rothwell**  
515 Anzac Avenue, Rothwell, QLD 4022

[rothwell.thyme.com.au](http://rothwell.thyme.com.au)  
1300 719 843 | [rothwell@thyme.com.au](mailto:rothwell@thyme.com.au)

**THYME**  
LIFESTYLE RESORT

ROTHWELL